



Company News

公司動態

2023 HKIA Award and Green Building Award 2023 香港建築師學會大獎 及 環保建築大獎

Talent is proud to have 2 projects getting Awards in 2023. The projects are:-

Crop Science Laboratory Hong Kong Baptist University

- Finalist in HKIA Special Award (Heritage & Adaptive Re-use)
- Finalist in Green Building Award (Completed Projects - Institutional)

The Crop Science Lab incorporates active and passive energy saving design element with provisions of on-grid renewable energy system, automatic irrigation system and smart control system.

The ISF Gallery

- HKIA Special Award (Interior Design)

The Gallery project is a tribute to pure form and the sky's connection. Its covered walkway links buildings, creating new spaces for learning and socializing.

We believe that this is still the beginning of our mission for quality works. We still have a lot to explore and learn. With these awards as encouragements to our targets, we will continue to put efforts and resources in providing M&E expertise for architectural excellence, offering and promoting green strategies and sustainable M&E systems to our clients. Our customers are well informed of the costs and benefits of such strategies so that appropriate decisions can be made. There are also clients who share the same vision with us and are willing to sacrifice a bit for creating sustainable works.

在2023年度，滙智的兩個項目獲取獎項。獲獎項目為：-

香港浸會大學農作物實驗室

- 香港建築師學會特別獎之入圍項目 (保育和適應性再利用)
 - 環保建築大獎之入圍項目 (已落成項目 - 公用)
- 農作物實驗室結合了主動和被動式節能建築元素，包括有與電網接駁的再生能源發電系統、自動灌溉系統、智慧控制系統等。



弘立書院藝廊

- 香港建築師學會特別獎 (精裝修設計)

"藝廊"是對純粹形式和與天空的聯繫的致敬。設計蓋行人道連接現有建築物，為學校社區創造了新的學習和社交空間。

我們相信這仍是大使命的開始，我們需繼續努力學習及探求。得到這些獎項的鼓勵，我們會繼續投入資源及力量，為卓越的建築提供機電專業配合，並向客戶推薦綠色策略及可持續的機電系統。客戶對這些策略有充份了解，清楚其優點及代價，從而作出適當的決策。我們的客戶中不乏同路人，他們也具願意付出的心，為未來發展可以持續而付出代價。

Keeping Abreast of New Technology 與新科技並肩前行

We are proud to have arranged group studies on New and Emerging Technologies for the past 5 years and can keep the momentum to start the sixth. Each year our colleagues will select topics and form groups to pursue their interested areas. 12 topics were selected last year covering topics like carbon emission estimation and net zero carbon building design, micro-nano bubble technology for cooling tower, direct thermal charging cell, and micro in-building hydropower generation system etc.



We are implementing some changes to set aside certain colleagues to look into the applications of the new technologies into our design such as Artificial Intelligence(AI) control in chiller plant system etc. This requires the unloading of the regular project works from these colleagues so that they can spend more time on these studies.

The advancements of computer science and information technology have been bringing the upheaval on our daily lives. M&E engineering have been deeply engaged to the change. The continuing studies and learning can keep us abreast of the new technology. Studies were carried out in groups for 4-6 months. Results of the studies, findings and analyses were presented to other colleagues with the materials and the results uploaded to our server for sharing and retrieval. This enables our colleagues to appreciate the importance of keeping afresh of the technology advancements in our industry and also the cross fertilizations from other industries. We are still in a process of institutionalizing the culture of questing for knowledge and advancements to our management system.

我們欣喜能在過去的5年裡安排新興技術的小組學習及鑽研，並且保持勢頭邁向第六年。每年同事們仍會選擇感興趣的主題，並組成小組在所選領域中探索。去年選擇了12個主題，涵蓋淨零碳建築設計、利用臭氧微氣泡技術進行冷卻水水處理、直接熱充電池以及微型大廈水力發電系統等主題。

我們正在應用一些新技術在項目設計中，例如於中央空調系統採用人工智能(AI)控制。這安排需要同事卸除部份常規工作，讓他們可以花更多的時間在這些新科技應用及設計上。

另一方面，電腦科技和訊息技術的推進，給我們的日常生活帶來了劇變。機電工程已經深入參與到這種變化中。持續學習和鑽研可以讓我們跟上新科技的步伐。經過為期4-6個月的研究後，小組會進行研究結果簡報，使其他同事能夠掌握技術發展的當前情況和新興趨勢，並將資料上傳到我們的伺服器上，以供共享和檢索。這使我們的同事能夠認識到，保持我們行業的技術進步，以及與其他行業的交流的重要。我們仍在將這學習及探索養成一種文化，融入管理體系中。

Promotion to Associate – Mr. Chan Hon Pan 晉昇副董事 — 陳漢斌先生

Mr. Pan Chan graduated from the Hong Kong Polytechnic University with honor degree in Mechanical Engineering in 2012. He holds a Master Degree in Building Services Engineering and is a Chartered Engineer. He joined Talent as graduate trainee since his graduation and ascended up the stair to become Associate in the Company. Through years of relentless hard work and focusing on projects' and clients' needs, he garnered countless compliments and appreciations from project teams. He developed an analytical mind and handled projects cautiously at a very early stage of his career. His experiences cover commercial, office tower, hotel, residential development, institutional projects, etc. and he specializes on formulation of M&E schemes and analytical studies. His promotion bolsters the capacity of our Company's talent reserves and upkeeping the technology edges of our engineering team.

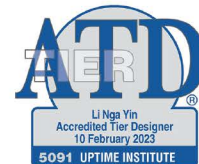


陳漢斌先生於2012年畢業於香港理工大學，獲機械工程榮譽學士學位，隨後獲取屋宇設備工程學碩士學位及英國特許工程師資格。陳先生從畢業起便加入滙智作為受訓畢業生，經歷多年努力，晉陞至副董事職級。其過人的分析能力及謹慎的處事作風，經年累月的辛勤工作及專注於項目及業主的要求，已取得業主及項目團隊的信賴及好評。陳先生的經驗涵蓋商業、辦公樓、酒店、住宅發展、學院項目等，專長於機電方案研究、定案及系統分析。他的晉昇鞏固了我們的專才儲備及保持我們同事們緊隨科技發展的優勢。

Accredited Tier Designer, Uptime Institute – Ms Eleanor Li and Mr. Bernard Ng 李雅妍女士 及 吳丞斌先生

Ms Eleanor Li and Mr. Bernard Ng worked as project engineer for various data centre projects over 10 years covering building M&E infrastructure design and data hall design etc. They have been qualified as Accredited Tier Designer under Uptime Institute last year. They are ready to offer Tier Class data centre design service to our clients that can ensure resilience of building systems operation and fault tolerance in data centre. They will further present to other colleagues for sharing and enhancing the data centre design in company.

李雅妍女士及吳丞斌先生作為不同數據中心項目的項目工程師超過10年經驗，設計內容涵蓋機電主系統設計及數據大廳設計等。去年他們並獲取 Uptime Institute 轄下 Accredited Tier Designer 資格，準備好向客戶提供數據中心Tier等級設計服務，以確保機電系統設計具備足夠的運行彈性及容錯能力。他們也向其他同事分享數據中心的經驗及設計要點。





Projects Completed Recently (近期竣工項目)

'Wellness Lodge', Transitional Housing at Castle Peak Road, Tsing Lung Tau, H.K.

'普綠軒' 青山公路過渡性房屋 — 香港 · 青龍頭

The project comprises approximately 85 flat units for the family of 1 to 2 persons, STEAM multi-purpose room and free Wi-Fi services. The operation is under Pumen Foundation and is named 'Wellness Lodge' for this transitional housing. The construction was adopted with Modular Integrated Construction (MiC). Talent carried out the M&E design and project administration for the project. The construction was completed at the end of 2023.

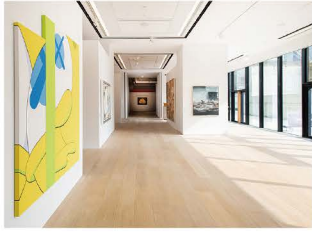


項目包括提供約85個適合1至2人的家庭住宅單位，並提供STEAM元素的多功能活動室及免費網絡服務。項目的營運機構為普明基金會，項目名為'普綠軒'，並採用組裝合成建築法(MiC)進行。滙智為本項目進行機電設計及項目管理工作，工程已於2023年年底完成。

Phillips Asia Headquarters, WKCD Tower in West Kowloon Cultural District, H.K.

富藝斯亞洲總部 — 香港 · 西九文化區

We were engaged in Mechanical & Electrical fitting-out design for Phillips new Asia Headquarters in WKCD Tower, situated immediately opposite the museum M+. Encompassing more than 5,000m² spreading across six floors, the new Asia Headquarters will be one of the largest auction houses in Asia comprising galleries, an auction room, an event space, a cafe, a lounge, and offices, etc. Talent carried out M&E design and project administration for the project.



我們受僱為富藝斯新亞洲總部進行機電系統設計以配合精裝工程。新亞洲總部位於M+ 博物館旁的西九文化區管理局大樓，佔地分布六層，總平面超過5,000m²，新總部將成為亞洲最大的拍賣行之一。設有畫廊、拍賣室、活動空間、咖啡室、休息室和辦公室等。滙智負責機電設計及項目管理工作。

Improvement to Lift Lobbies at L3 and Main Entrance of Shaw Campus for Hong Kong Baptist University, Kowloon Tong, H.K.

香港浸會大學邵逸夫校區正門及樓層三電梯大堂翻新改造工程 — 香港 · 九龍塘



The project comprises the improvement works to the Main Entrance of Shaw Campus, lift lobbies of David C. Lam Building and Wing Lung Bank Building for Business Studies. Addition of information display systems, enhancement works for security and access control system, and modernization of existing lifts are to be carried out at the same time. Talent carried out M&E design and project administration and the Main Entrance & lobbies came to operation in the 4th quarter of 2023.

項目為香港浸會大學邵逸夫校區正門進行改善工程，並翻新改造思齊樓和永隆銀行商學大樓的相關電梯大堂。工程同時於大堂新增資訊顯示系統、改善安保和門禁系統，並為現有電梯進行優化工作。滙智負責機電系統設計及項目管理工作。邵逸夫校區正門及電梯大堂已於2023年第四季投入使用。

Residential Development at No. 1, South Bay Close, H.K.

南灣坊1號住宅發展項目 — 香港 · 南灣

After completing two boutique hotels including Le Rivage Hotel at Connaught Road West and One96 at Queen's Road Central, we have completed another residential development in South Bay Close with total gross floor area of approximately 2,500m² from the same developer. The development comprises a deluxe residential tower together with a carpark, landscape garden and swimming pools. We hope that continuing collaboration with the client and team players renders the project progressing smoothly and in a cost effective way.

我們早前為同一發展商完成兩項精品酒店發展項目，包括干諾道西的Le Rivage及皇后大道中的壹96酒店。另一項由同一發展商於南灣坊的2,500m²的住宅發展項目亦已經完成，項目包括1座豪華住宅，並設有停車場、園林及泳池。與此發展商的長期合作，及項目團隊共事，令項目進展順利及更具成本效益。



A&A Works for Garden Bakery, Sham Shui Po, H.K.

嘉頓麵包廠翻新改造工程 — 香港 · 深水埗



We were engaged in the Mechanical & Electrical consultancy service for the A&A works of this Grade 2 historic and well-known local landmark building in Sham Shui Po. The current building consists of factory with a retail shop and a restaurant, functional in design and featuring typical modernist architectural element with the clock tower as an iconic feature which was constructed between 1951 and 1960. Project works included enhancement of the existing façade, renovation of ground floor to second floor, fifth floor to seventh floor with total area of approximately 4,000m². The works were completed in the 4th quarter of 2023.

我們很榮幸獲聘為此位於深水埗之著名地標並確定為二級歷史建築物進行機電設計，現有建築物建於1951年至1960年之間，由廠房、零售商店和餐廳組成，其設計具有功能性、現代主義建築元素並以鐘樓為標誌。項目包括對現有外牆進行翻新改造，並對地面層至二層及五層至七層進行翻新，總改造面積約為4,000m²。工程於2023年第四季度完成。

Asset Enhancement Works at Kai Tin Shopping Centre (New Wing), Lam Tin, H.K.

啟田商場(新翼)改造工程 — 香港 · 藍田



Kai Tin shopping centre is a Link's property comprising Old Wing and New Wing with 5-storey shopping arcade and a total area of around 20,760m². The area under renovation is around 6,000m². The project entails the re-partitioning of existing shops, new lavatories and beautification of internal common area. The project completed at the end of 2023.

領展旗下的啟田商場包括新舊翼共5層，總面積約20,760m²，改造面積約6,000m²。項目為現有新翼商場進行改造及翻新，工程包括重新規劃商舖間格，新建洗手間及美化室內公共空間。項目於2023年年底完工。

Replacement of Chiller Plants for Fanling Town Centre, Fanling, H.K.

粉嶺名都商場更換空調製冷系統 — 香港 · 粉嶺

The existing chiller plant locates on the podium of the composite development and comprises of 2 air-cooled chillers and 2 water-cooled chillers. In order to deal with an increasing cooling demand from the shopping arcade, the existing 2 air-cooled chillers were replaced by new water-cooled chillers with better energy efficiency. The chiller plant eventually results with a total capacity of 1,480 TR to support the air conditioning system for the 2-storey shopping arcade with total area of 11,000m² approximately.

商場現有空調機組位於屋苑平台，設有2組風冷機組及2組水冷機組。為應對商場未來冷負荷的需求，現有風冷機組已更換成更具能源效益的水冷機組。空調機組總容量已增至1,480冷噸，提供冷凍水服務與樓面面積約11,000m²的兩層購物商場。



EV Charger Installation for Nina Mall 1, Nina Mall 2 and Lucky Plaza, H.K.

如心廣場1期及2期、好運中心電動車充電器安裝工程 — 香港 · 荃灣及沙田



The project comprises a total of 20 units 50kW Quick DC chargers for the three carparks. Due to the existing power supply limitations in the carparks, the EV charger Load Management System has been designed to effectively regulate the power output of each charger. Talent carried out M&E design and project administration for the project. The project was completed in June 2023.

本項目在3個停車場安裝合共20台50kW 快速充電器。由於停車場現有的電力供應有限，故設計了一套電動車充電管理系統，以有效地控制每組充電器功率輸出。滙智為本項目進行機電設計及項目管理工作，工程已於2023年6月完成。

Improvement Works on Ground Level at the ISF, Pokfulam, H.K.

弘立書院改造工程 — 香港 · 薄扶林

The ISF Academy campus in Pokfulam comprises the Primary and the Secondary Schools. Improvement works are carried out mainly at Ground floor throughout the circulation from main gate, circular plaza of Primary School, skylight corridor and entrance gate of Secondary School, including gymnasium, primary library, covered playground, functional classrooms and staff offices. The affected area of this project is about 7,200m². The project is commissioned in phases. Phase A and Phase B were completed in August 2022. This phase, Phase C, mainly the new link bridge between 3/F of Primary School and 2/F of Main Campus, was completed in November 2023.



弘立書院的小學部及中學部座落於薄扶林的校舍。項目為連接小學部至中學部的主要通道，進行改善及翻新工程，當中包括體育館、小學部圖書館、有蓋操場、多用課室和教職員辦公室等，所涉面積約7,200m²。項目分期進行，首兩期已於2022年8月竣工完成。本期第三期主要為新建的連接橋部份，接通小學部三樓與主校區二樓，已於2023年11月竣工完成。

Renovation Work for Aberdeen Marina Club, Shum Wan Road, H.K.

深灣遊艇會現有用房翻新 — 香港 · 深灣



After completing the power supply upgrading works to about 170 wet berths and reviewing existing Fire Services system in the Aberdeen Marina Club, another renovation work for 3/F Caffè Luna was completed at the end of 2023. Renovation work for Caffè Luna covers the indoor / outdoor seating and kitchen area for the Italian restaurant. We hope that we can become the long-term partner with the client by providing technical expertise and close attendance to the project.

繼早前為深灣遊艇會完成約170個遊艇泊位供電系統更新工程及現有消防系統考核的顧問工作後，我們於2023年年底另為遊艇會完成三樓意大利餐廳翻新的顧問工作。意大利餐廳的機電設計服務包括室內外用餐區及廚房區。我們希望能藉著技術、能力及工作上的專注，成為業主的長期合作夥伴。



New Commissions 新任務

Proposed Composite Building at No. 452-464 Prince Edward Road West, H.K. 太子道西452-464號住宅發展項目 — 香港 · 九龍城

The development consists of one block of 26-storey residential tower together with shops, clubhouse with total floor area of around 6000m². Open kitchen design is adopted for studio flats in considerations of modern look and flexible area usage. The scope of consultancy includes M&E design and project administration.

項目由1幢26層高住宅樓、商舖、會所組成，總面積約6000m²。顧問服務包括全部機電系統設計及項目管理。單位採用開放式廚房設計，以達至時尚及較富彈性的空間運用。

Development for Ping Shan Spiritual Centre at No. 20 Ping Shan Nam Pak Road, Ping Shan, Yuen Long, H.K. 屏山南北路20號屏山靈修中心發展項目 — 香港 · 元朗

The development is a low-rise development comprised of 2 nos. 3-storey hostel building and 1 no. individual chapel building with various facilities including multi-function rooms, canteen, library, etc. The total floor area of the development is around 5,000m². The scope of consultancy services includes M&E design and project administration. The expected completion of the project will be in Early-2026.

項目為一個低層發展項目，由兩棟樓高三層的宿舍大樓及獨立教堂組成。設有多功能房間、食堂、圖書館等設施。項目總建築面積約5,000m²。滙智負責機電系統設計及項目管理工作。整體工程預計於2026年初完成。



Proposed Renovation Works for Siberian Building, 29 Des Voeux Road Central, Central, H.K. 西伯利亞大廈翻新工程 — 香港 · 中環



Siberian Building is a 13-storey commercial building and has been operating in Hong Kong since 1967. This renovation works involve enhancement of the existing building façade, up-lifting of public circulation area and tenancy units. Talent carries out M&E design and project administration for the project, particularly to upgrade the existing main power supply system, re-provision of MVAC system to tenancy, replacement of plumbing and drainage system, modernization of lifts, and the associated modification works to suit user's requirement and building operation needs. The renovation works will be completed in the 4th quarter of 2024.

項目為一座於1967年落成的13層高商業大廈。本項工程包括改善現有建築物外牆設計、翻新公共通道及大廈租賃單位。滙智負責本項目的機電系統設計及項目管理，其中包括更新主供電系統、為租戶重新提供空調系統、更換給、排水道系統、優化現有升降機組，以及相關改造工程，以滿足用戶要求和大廈運作需求。翻新工程將於2024年第四季完成。

Energy Audit Projects in Hong Kong 能源考核項目 — 香港

After full implementation of the Buildings Energy Efficiency Ordinance (BEEO) since 2012, commercial buildings or the commercial portion of a composite buildings (irrespective of newly constructed or existing one), every 10 years, is required to carry out energy audit for the 4 key types of central building services installation. With the methodology developed in our past energy audit and energy-saving projects, we have continuously conducting energy audits for buildings. This year, we have been engaged again to carry out a second-time energy audit for three premises for Tung Wah Group of Hospitals, with the first-time energy audit being conducted by us 10 years ago. The energy audit team comprise of a Registered Energy Assessor as the team leader and several engineers as assistant energy assessors. Through working on detailed data collections, analysis, and energy management opportunities recommendations together, this provides another valuable opportunity to train our young engineers on energy usage and energy savings.



自2012年全面實施《建築物能源效益條例》後，商業建築物或綜合用途建築物的商業部分（不論新建或現有建築物），須每10年為4類中央屋宇裝備裝置進行能源審核。採用我們已建立的能源分析及系統評估技術，我們不間斷為建築進行能源審核。今年，我們再次受邀為香港東華三院進行三幢物業的第二次能源審核，而我們在10年前已經完成了第一次能源審核。能源審核團隊由註冊能源評估師擔任團隊負責人，以及幾名工程師擔任助理。通過詳細的數據收集、分析和能源管理機會的建議，令年青工程師更能掌握能源耗用及節能工程這課題。

2022-25 Campus Works Projects for Hong Kong Baptist University - New Lab in Chinese Medicine Building, Kowloon Tong, H.K. 香港浸會大學2022-2025年度校園項目 — 中醫藥學院大樓工程實驗室工程 — 香港 · 九龍塘

The project consists of the conversion of existing exhibition hall at ground floor and mezzanine floor of the Chinese Medicine Building into scientific laboratories to accommodate the vibration-sensitive scientific equipment affected by the redevelopment of Ho Sin Hang Campus of the University. Our task includes modifications/ upgrading of existing M&E installation to meet the specified scientific equipment in new laboratories. The renovation works are expected to be completed in the 1st quarter of 2025.

項目為中醫藥學院大樓的現有展覽中心改造為科學實驗室以安置因應何善衡校園重建工程而影響的實驗儀器。滙智將負責為相關現有機電系統進行改造及提升，以配合科學實驗室儀器的需要。工程預計於2025年第一季完工。



Gucci Stores in China 古馳名店 — 中國

We continue to work on Gucci stores in China under the term of the serial contract. In 2023, we have completed eight Gucci Stores in China. Currently over five Gucci Stores in Haikou, Shanghai, Wuhan, Taiyuan, and Guangzhou are commissioned. We hope that we can continue to be the long term partner with the client and the interior designer by providing technical expertise and close attendance to the projects.



我們繼續服務古馳，為古馳在中國的其他分店進行機電顧問工作。2023年我們再次完成8間分店，現時已在進行中的古馳名店有5間，分別位於海口、上海、武漢、太原及廣州。我們希望能藉著技術、能力及工作上的專注，能繼續成為業主及設計師的長期合作夥伴。

Dior Stores in China 迪奧名店 — 中國

In 2023, we have completed eight Dior Stores. Currently about three Dior Stores in Shenzhen, Changsha & Hangzhou are commissioned and will be completed in 2024. We hope that we can continue to be the long term partner with the client and the interior designer by providing technical expertise and close attendance to the projects.

2023年我們再次完成8間分店。現時已在進行中的迪奧名店有3間，分別位於深圳、長沙、及杭州，並預計在2024年內完成。我們希望能藉著技術、能力及工作上的專注，能繼續成為業主及設計師的長期合作夥伴。



Valentino Stores in China 華倫天奴名店 — 中國



In 2022, we have signed a serial contract with the client. We have completed three Valentino Stores in Shenzhen, Shanghai and Haikou. Currently another two Shenzhen Stores in Luohu MixC are commissioned and will be completed at the beginning of 2024. We hope that we can continue to work with the client for more projects.

2022年我們與華倫天奴簽訂了年度設計服務協定。現時已完成三間分店，分別位於深圳、上海及海口。另外兩間深圳羅湖萬象城分店，預計在2024年初完成。我們希望能為業主完成更多項目。

Hypothetical Design & Preparation of Employer's Requirements for Joint-User Bldg. with Government Laboratory's Facilities, Tseung Kwan O, H.K. 政府聯用大樓及化驗所初步設計及提供技術要求 — 香港 · 將軍澳

The project comprises specialized laboratories of Government Laboratory, Library, Centre for Home Care Services for Frail Elderly Persons and Post Office with a total required net operational floor area of around 31,590m². Talent carries out the hypothetical design and prepares Employer's Requirements for ArchSD tender use.

The major challenge in this project is that Government Laboratory requires to accommodate in total 235 fume hoods, 279 local exhaust hoods and 34 bio-safety cabinets. They will be scattered among different laboratory sections, floors and rooms, and will require fume stacks running from the equipment locations to the jet fans at roof for exhaust. Talent carries out ventilation system design for different type of fume hood and bio-safety cabinets and well coordinates with Architect and Client for an optimized vertical arrangement of laboratory section and net operational floor area.

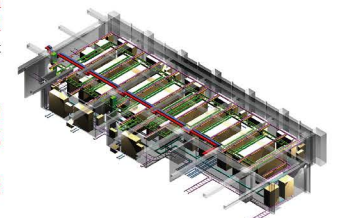


項目包括政府化驗所的專業實驗室、圖書館、為長者服務的家庭服務中心及郵局，總房間實用面積約31,590m²。滙智負責進行初步機電設計，並為建築署將來招標準備技術要求文件。此項目的主要挑戰是政府化驗所需要設置總共235個實驗室排煙櫃、279個排風罩及34個生物安全櫃。它們將分散在不同的實驗室部門、樓層和房間中，並需要透過風管管壁井從設備位置連接到屋頂排風機進行排氣。滙智按不同類型的實驗室排煙櫃及生物安全櫃設計通風系統，並與建築師及化驗所緊密協調，以優化實驗室部門樓層布置及房間實用面積。

Enhancement of Existing Chiller Plant for Data Centre, Shatin, H.K. 數據中心樓宇空調系統改善工程 — 香港 · 沙田

The Data Centre has a total floor area of 1,500m². This project aims to enhance the existing chiller plant by adding a new air-cooled chiller, and upgrade the existing chiller plant control system to increase the resilience of the system. Additionally, an artificial intelligence system for chiller plant control will be introduced to develop an energy efficient Data Centre.

數據中心總面積約1,500m²。本項目旨在通過增加風冷式冷水機和升級現有的冷水機控制系統來增強現有的冷水機控制，以提高系統的彈性。此外，還將引入用於冷水機組控制的人工智能系統，以打造一個高效節能的數據中心。



Team Building Activities
團隊建立活動

Last year, apart from resumption Vacation Subsidy, we invited all colleagues and their family members for team building activities. Under the cool autumn weather, we arranged family hike to Tai Lam Country Park. After a 200-metre climb, we reached The Reservoir Islands Viewpoint. We enjoyed the view and took



a photo with Tai Lam Chung Reservoir and the 'thousands' of islands dotting its surface. The islands below were the peaks of hills in what were once open valleys before the area was flooded to create the reservoir.

In the evening, we joined with other colleagues and family members with over 30 people for competitive



activities and a barbecue together. These team building activities encourage our colleagues maintaining physical fitness, getting to know each other better and building long-lasting relationships.

Besides, colleagues laced up their football cleats and came together for friendly matches after work. It offers a chance to enhance their connection and healthy life.



去年，除了恢復旅行補貼，我們邀請了所有同事及其家屬參加了團隊建立活動。在秋高氣爽的天氣中，我們安排了家庭登高活動，前往大欖涌郊野公園。



經200米的攀登，我們到達了大欖涌郊野公園。我們欣賞了大欖涌水塘及其表面的「成千上萬」島嶼的景色，並合影留念。這些島嶼於建造水塘之前，實際上是一片開闊的丘陵。

傍晚時分，我們與其他同事和家屬一起進行了競技活動和燒烤活動，共有30多人參與。這個活動鼓勵我們的同事保持身體健康、更好地了解彼此，並建立長久的關係。



另外，同事們還在工餘時組隊進行友誼式的足球比賽，既能建立彼此間的情誼，又能促進身心健康。

Resumption of Vacation Subsidies for Team Building Tour
恢復團隊建立旅遊補貼



Restricted by the Covid measures for travelling, our subsidized tours overseas for team building has been suspended for 3 years. As the effects of Covid has been tempered either by mutations of the viruses or by vaccinations, the measures have been relaxed throughout the world. Starting from last year, we resumed our vacations overseas that we have been holding for more than 15 years. A retrospection of the past destinations reveals that most of the continents had been covered. Among the

popular countries and regions such as Asia (Japan, Korea, Taiwan, Dubai, Bali, Turkey), continental Europe (Germany, Austria, France, Spain, Portugal, Hungary, Czech Republic, Finland, Iceland), North America (USA, Canada) and Oceanian countries (Australia, New Zealand), there are some regions that not too many people from HK would usually visit like Fiji, Central Asia, Palau. However, we notice that few of our colleagues have opted for South America and Africa. Of course, if we use in-depth travel as a measure, we still have many places that are worth visiting. For new recruits, choosing a location is another issue. We would see if there are colleagues who had travelled to most of the popular places and would like to explore new horizons.

Travelling always tests our temperaments and reveals our true selves that we may not notice in our daily lives. We hope that this platform can help our colleagues knowing each other better.



受新冠肺炎疫情措施限制，我們的海外旅遊的團隊建立活動停止了3年。由於疫情的影響已因病毒變種或疫苗接種所緩和，因此，全世界都放寬了限制措施。由上年起我們恢復我們已經舉辦了超過15年的海外旅遊。回顧過去的目的地，大部分大洲都已被覆蓋。熱門國家和地區如亞洲（日本、韓國、台灣、迪拜、巴厘島、土耳其）、歐洲大陸（德國、奧地利、法國、西班牙、葡萄牙、匈牙利、捷克、芬蘭、冰島）、北美（美國、加拿大）和大洋洲國家（澳大利亞、新西蘭），還有一些少數香港人會去的地區，如斐濟、中亞、帛琉等。但是，我們注意到很少有同事選擇南美和非洲。當然，若以深度遊作為衡量標準，我們還有很多地方是很值得一去的，且對新進公司的同事來說，選擇目的地又是另一回事。我們會看看有沒有同事去過大部分的熱門地方，願意去探索新視野。



旅遊總是能考驗著我們的脾氣，揭示著我們在日常生活中可能不會注意到的真實自我。我們希望這個平台可以幫助我們的同事更好地相互了解。



Head Office: Unit 203, 2/F, Dominion Centre, 43-59 Queen's Road East, Wanchai, Hong Kong
 總公司 香港灣仔皇后大道東 43-59 號東美中心 2 樓 203 室
 t: +852 2838 9133 f: +852 2836 0750 e-mail: info@talentme.com
 web-site: www.talentme.com

Beijing: Unit 1A-223, Gemdale City Crown, No.2 Li Yuan Li North Street, Chaoyang District, Beijing, China
 北京 北京朝陽區力源里北街 2 號院金地名京商業樓 1A-223 室 郵編: 100025
 t: +86 10 6568 1429 e-mail: bj@talentme.com

Shanghai: Room 1401, Building B, Sunyoung Center, No.28 Xuanhua Road, Changning District, Shanghai, China
 上海 上海市長寧區宣化路 28 號舜元企業發展大廈 B 棟 1401 室 郵編: 200050
 t: +86 21 5108 5770 f: +86 21 5258 3100 e-mail: sh@talentme.com

Chengdu: Unit 3, #2, Building 268, No. 151 Shuangqiao Road, Chenghua District, Chengdu, Sichuan, China
 成都 四川省成都市成華區雙橋路 151 號 268 棟 2 單元 3 號
 t: +86 28 6202 3391 e-mail: chengdu@talentme.com