



## Company News

### Relocation of our Beijing Office

#### 北京分公司搬遷



As the rent in Beijing is still escalating, we have to relocate our office further away from the city center. Staying in the premises for 5 years is not too long compared with our other offices. The new office is at the 4th ring at East side of the

city served by underground mass transit and should not be too inconvenient to our colleagues. The **new address and the contacts are printed at the back of this newsletter**. Again, **energy saving lighting systems** are used in the office. Of course they are more energy efficient and durable. **Additional fresh air for free cooling during spring and autumn is used to save air conditioning energy**. **Strengthened air filtration system is added to cope with the local air pollution**.

There is also a sign of slight market recession in Beijing. We are consolidating our resources and formulating a long term strategy to withstand perhaps a downturn of the market and with flexibility to cope with the change either up or further down turn of the market.



隨着北京的租金仍在上升，我們需要移離市中心以控制成本。在上個辦公室辦公已5年，相對其他分公司的辦公室而言不算長。新辦公室在東面四環路上，接隣附近的地鐵站，對同事上班來說仍算方便。**新地址及聯絡方式印在本簡訊的最後頁**。

我們再次使用節能照明系統，

當然比之前的裝置更能節省能源及更耐用。**空調系統設置加大新風裝置，在春季提供室外新風冷卻，節省空調用電。並加強新風過濾效能，以減低室外空氣污染的影響**。北京建築市場有下滑趨勢，我們在整合資源，制定長遠策略，以應付可能來臨的進一步市場下滑，又帶靈活性地隨時迎接市場復甦。

## 公司動態

### Relocation of our Shanghai Office

#### 上海分公司搬遷



We had been using our Shanghai office for more than 10 years. The landlord took the premises back for redevelopment and hence we had to move to a new office. Unlike Beijing office that we had to move further away, the new office was very close to our former office in the city center and also close to the

underground mass transit. The office compared with the old one is the availability of better day-lighting. The **new address and the contacts are printed at the back of this newsletter**. There is also a sign of slight market recession in Shanghai. Our team **managed to get more projects in Shanghai and therefore less vulnerable to the downturn**. We are consolidating our resources and formulating a long term strategy to withstand perhaps a downturn of the market and with flexibility to cope with the change either up or further down turn of the market.



我們已使用上海辦公室超過10年，業主將收回全幢物業重新發展，因而需要搬遷辦公室。上海情況與北京辦公室不同，新辦公室仍在市中心，且離舊有辦公室一街之隔，接隣附近的地鐵站。辦公室的特點是採光特別好，但為節能而需要擋陽光幅射的裝置。**新地址及聯絡方式印在本簡訊的最後頁**。

上海建築市場亦有下滑趨勢，我們上海團隊已**努力多接任務，故所受影響輕微**。我們在整合資源，制定長遠策略，以應付可能來臨的進一步市場下滑，又帶靈活性地隨時迎接市場復甦。

## Team Building Tour – Vacation Subsidy

### 團隊建立 — 每年旅遊贊助

Last year, team building activities were scattered with diverse destinations so that colleagues could select according to their own interests. **Austria, Czech Republic, Japan and New Zealand** were selected. These are prevailing touring areas for the people from Hong Kong. Beautiful landscape and extreme sport were still popular in our office, and New Zealand tour was a good example. Meeting the Alpaca in the farm was a wonderful experience apart from the exotic sports. Tour destinations for this year including Italy and Dubai have been selected by some of our colleagues. Colleagues have the chance to experience the **Renaissance Art in Italy, and visit the gigantic and luxurious buildings in Dubai**. Would this also help inspiring their work? The other colleagues have not made up their minds on the destinations yet.

去年，公司團隊建立旅遊的選擇分散在各個地點，按各同事不同需要作出選擇 — 最終選擇包括**奧地利、捷克、日本及新西蘭**等為港人熟識的旅遊點。自然風光與極限運動仍然是同事熱愛的選擇，新西蘭之旅便是其中一個最好的例子，在眾多刺激的體驗以外，於農場與羊駝接觸亦是很難得的經歷。今年，部份同事已選好目的地，計有意大利及杜拜，他們有機會能親身感受**意大利文藝復興的藝術品、建築及遺跡**，以及**參觀杜拜的碩大及華麗建築**。說不定亦可啟發工作靈感。而其他同事則仍在考慮中。





# PROJECT 項目

## Projects Completed Recently (近期竣工項目)

### China Resources Nantong MIXC, Nantong, China

#### 華潤南通萬象城 - 中國·南通

China Resources Nantong MIXC comprises shopping centre and office tower with total floor area of around 300,000m<sup>2</sup>. Talent carried out conceptual design and the checking of extended preliminary design and detailed design. In reaching the M&E schemes, a number of system comparisons, analyses, studies and applications of new concepts were carried out for reaching optimum solutions. The project has been completed early this year.

華潤南通萬象城包括購物中心及辦公樓，面積約300,000m<sup>2</sup>。滙智負責方案設計，並擴初及施工圖的審核。滙智進行多項機電系統比較及專題分析，應用新概念，以達到最佳方案。項目已在2018年年初落成。



### Redevelopment of Caritas Social Centre, Tsuen Wan, H.K.

#### 荃灣明愛社區中心重建項目 - 香港·荃灣



The redevelopment is a 10-storey institutional building with social centres for a variety of services, hall, dormitories, sensory green garden, roof garden and carpark. The total gross floor area is around 8,380m<sup>2</sup>. The Architect is very keen on energy conservation and sustainability. Various green features including energy saving lighting system, renewable energy systems, food waste decomposer etc were adopted.

重建項目為一幢十層高社區中心，設施包括多元化的社區服務中心、禮堂、長者宿舍、多處綠化花園及停車場，總面積為8,380m<sup>2</sup>。項目建築師著重環保節能及可持續發展設計，採用多項環保設備包括節能照明、再生能源系統、廚餘回收等。

### Renovation Works from G/F to 3/F, Lok Sing Centre, Yee Wo Street, H.K.

#### 樂聲中心翻新工程 - 香港·銅鑼灣

Large portion of the podium of Lok Sing Centre from G/F to 3/F was renovated in this project, with the total area of 6,600m<sup>2</sup> approximately. Shopping space comprises shops, restaurants and entertainment facilities. The new façade design would bring new experience to customers and users. Talent carried out the M&E design and project administration, particularly to upgrade the existing M&E system including new oil free air cooled chiller plant and lift system, to achieve high energy efficiency facilities.



項目對裙樓地面層至三層大部份商舖範圍進行翻新改造，由商店、餐飲及娛樂場所組成的購物空間，總面積約為6,600m<sup>2</sup>。配以全新的外立面設計，將為顧客及用戶帶來全新的體驗。滙智負責機電設計及施工管理，更新現有機電系統，提升能源效益，其中包括新造無油風冷制冷機組及升降機系統等。

### Renovation of Shopping Arcades in Tsimshatsui Centre & Empire Centre, TST, HK

#### 尖沙咀中心及帝國中心商場翻新 - 香港·尖沙咀



We have been taking part in the system condition studies and renovations of these 2 buildings for many years. This is the 3rd time we carried out M&E consultancy for the renovation works. The work covered G/F and Upper Ground of the 2 buildings. Working with the long term client is always pleasant and fortifying our confidence.

滙智已多次為這兩幢物業進行機電設施狀況評核及翻新工程，公司第三次為這兩幢物業首層及地上一層翻新提供機電顧問服務。能為長期客戶提供服務令我們更具信心及欣悅。

### Retail Network Project for Zung Fu at Chai Wan and Hung Hom, H.K.

#### 仁孚改造項目 - 香港·柴灣及紅磡

We are engaged in the renovation works for Zung Fu (Mercedes Benz Sales and Service Centres) in Chai Wan and Hunghom with total area of about 17,000m<sup>2</sup> and 6,000m<sup>2</sup> respectively. Buildings are equipped as new/renovated car sales and service centres. New car ramp will be constructed to facilitate the traffic for Chai Wan Project. Talent carries out the M&E design and project administration for the projects, particularly to upgrade the existing M&E systems including new/upgraded transformers, normal and essential power supply systems, chiller plant, fire services, plumbing & drainage systems and lift installations to achieve high energy efficiencies and fulfill the functional requirements of the projects. Hunghom Centre was completed and put into operation at the end of 2017.



我們受僱為仁孚柴灣及紅磡改造項目(平治汽車銷售及維修中心)進行機電設計，改造面積分別約17,000m<sup>2</sup>及6,000m<sup>2</sup>。項目包括汽車陳列室及維修服務中心，並於柴灣項目增設車輛斜通道通往各層。滙智負責機電設計及施工管理，更新現有機電系統，包括提升供電系統、制冷機組、消防系統、給排水系統及升降機系統等，以提升能源效益及滿足營運要求。紅磡中心已於2017年年底竣工並投入服務。

### Façade Enhancement Works at The Bank of China Building, Central, H.K.

#### 中國銀行大廈外牆改造項目 - 香港·中環

We are engaged in the Mechanical & Electrical consultancy services for façade enhancement works of this Grade 1 historic and well-known local landmark building in Central. Works include enhancement of the existing façade and roof by providing lighting effect and lightboxes installation, associated power supply and chiller plant modification. Works were carried out in 2 phases. The whole installation was completed in September 2017. Close co-ordination and swift decision are critical to the timely completion of the tightly scheduled project.



我們很榮幸獲聘為此位於中環之著名地標並確定為一級歷史建築物之外牆改造項目進行機電設計，工程包括為現有外牆及天台頂層進行改造及提供燈光效果、配電系統及制冷機系統改造等。工程分兩期進行，整個工程已於2017年9月竣工，團隊間的緊密配合及快速的決策是項目如期完工的重要因素。

### PCCW SPOF Analysis for Data Centre at Cyberport, H.K.

#### PCCW數據中心單點故障(SPOF)研究 - 香港·數碼港



We are engaged in the SPOF (Single Point of Failure) Analysis for PCCW Data Centre at Cyberport, Hong Kong. Talent carried out the site survey and measurement, reviewing the existing M&E system reliability and control strategy to address SPOF cases. Recommendations were proposed for system improvement to reduce the risk of failure and mitigate the effect in case of fault.

我們受僱為PCCW位於數碼港的數據中心進行SPOF(單點故障)研究分析。滙智負責透過現場勘察及測量、覆核現有機電系統之可靠性及操作模式，從而找出任何單點故障可能性，並提供相應的改善方案，降低機電系統出現故障的可能及減少出現故障時對系統的影響。

### HVAC System Review and Improvement for The Aberdeen Marina Club, Shum Wan Road, H.K.

#### 深灣遊艇會現有空調暖通系統運作考核 - 香港·深灣

The Aberdeen Marina Club consists of a five-storey Clubhouse and a ten-storey Marina Tower. It has been operating since 1984. The usage includes sports & recreation, food & beverage and carpark, etc. Talent carried out review and study on HVAC system including heating and cooling load review, existing chiller plant operation, water balancing, air balancing, feasibility study of combining two existing standalone chiller plants, upgrading of automatic control system, etc. Recommendations were proposed to enable the smooth and energy efficient operations of the HVAC System.



深灣遊艇會由一座五層高俱樂部及一座十層高的遊艇會大樓組成，遊艇會於1984年開業，設運動及娛樂設施、餐飲及停車場等。滙智負責為現有空調暖通系統進行運行考核及研究，包括彩暖及空調容量覆核、現有制冷機系統運轉考核、風平衡、水平衡、空調自控系統提升、對合併現有兩組獨立制冷系統作可行性研究等，並建議改善方案，令空調暖通系統運行暢順及提升能源效益。

### Alteration, Additions, Repairs and Improvement Works for Hong Kong Baptist University, Kowloon Tong, H.K.

#### 香港浸會大學翻新改造項目 - 香港·九龍塘



The project involves conversion, alteration, consequential and spatial re-planning for several existing premises inside campus including Yeung Shui Sang Building, Sir Run Run Shaw Building, teaching laboratories and research laboratories in Cha Chi-Ming Science Tower. Works were separated into different phases to suit the class schedules. Talent carried out M&E design, coordination for operational needs and project administration for the works. Following the completion of Yeung Shui Sang Building and part of Sir Run Run Building in 2016, remaining renovated areas in Sir Run Run Building and Laboratories in Cha Chi-Ming Science Tower were also completed and put into operation.

項目為香港浸會大學內多幢大樓包括楊瑞生紀念館、邵逸夫大樓、查濟民科學大樓之教學實驗室和研究實驗室進行翻新、改造及重新規劃。為配合校園的上課時間，翻新改善工程分多個階段進行設計及施工。滙智為配合校園運作要求進行機電系統設計、協調及項目管理工作。繼2016年完成整座楊瑞生紀念館及部份邵逸夫大樓，其餘邵逸夫大樓的改造範圍及查濟民科學大樓的實驗室改造項目亦已完成並投入使用。

### City'super in HKRI Taikoo Hui, Shanghai, China

#### 超·生活 - 興業太古匯店 - 中國·上海

The high-end store comprises food and beverages, lifestyle products and food markets with total floor area of approximately 4,000m<sup>2</sup>. Talent carried out M&E design and project administration for the project. The store was completed and put to operation at 3<sup>rd</sup> quarter 2017.



這所高級超市設有高級食材、生活用品售賣面積及美食廣場，總面積約4,000m<sup>2</sup>。滙智進行機電設計及施工管理，項目已於2017年第三季竣工並投入使用。



## New Commissions 新任務

### Thomson Reuters Data Centre, Shatin, H.K.

#### 湯森路透數據中心 - 香港 · 沙田

Since 2014, we have been appointed by Thomson Reuters to conduct a series of projects for the improvement of the mechanical and electrical systems of the data center in Shatin. The Data Centre is with total floor area of 1,500m<sup>2</sup>. Our scope of works includes upgrading / replacement feasibility studies, design and project management. The targets of the work are to enhance the data center overall energy efficiency and alleviate any possible system risk. These projects cover most of the major M&E systems in a data center including Power Distribution Unit, Uninterrupted Power Supply Unit, Isolation Transformer, Precision CRAC Unit, Chiller Plant, Cold Aisle Containment, Pre-action Fire Sprinkler System and Building Management System.

自2014年起，我們受聘於湯森路透，為其沙田之數據中心進行一系列機電系統提升工程。數據中心總面積為1,500m<sup>2</sup>。我們的工作範圍包括更新/更換設備及系統的可行性研究，系統更新設計和工程管理。該系列工程的目標在於提升數據中心的整體能源效率和降低可能的系統風險。項目涵蓋主要的數據中心機電系統，包括機櫃式電源分配單元、不間斷電源裝置、隔離變壓器、電腦房空調系統、冷水機組、冷通道屏蔽、預作用噴水滅火系統及屋宇自動化管理系統。

### Aberdeen Campus for Yew Chung Community College, Tin Wan, Aberdeen, H.K.

#### 耀中社區書院香港仔校舍 - 香港 · 香港仔 · 田灣



The project is to redesign and renovate the existing vacant school into new campus for nurturing professional early childhood educator teachers through offering quality programmes. The site area is about 1500m<sup>2</sup>. Talent carries out M&E design and project administration for the project. Project scope includes building facelift, upgrading of existing main systems and facilities to meet its

functional needs. The new campus is expected to come into operation in 2018.

項目為現有空置校舍重新設計及改建成新校舍，開辦高質素的幼兒教育課程，培育專業幼兒教育人才。地塊面積約 1500m<sup>2</sup>，項目內容包括外牆優化，因應校舍運作需要，提升機電主要系統及佈置，新校舍預計於2018年投入使用。

### Residential Development at 42-46 Tung Street, Sheung Wan, H.K.

#### 東街42-46號住宅發展 - 香港 · 上環

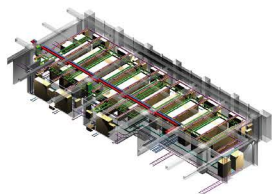
The project is to construct a single tower boutique residential building with floor area of 1,600m<sup>2</sup>. It consists of studio flats, duplex units with commercial premises at podium level. Talent carries out M&E design and project administration for the project. This is the first project that Talent works with the client and the Architect.



項目為一幢高級精品住宅，面積約1,600m<sup>2</sup>，本發展包括開放式住宅單位、複式單位及商業面積。這是滙智為業主及建築師進行的首樁項目。滙智負責機電設計及項目管理工作。

### New Chiller Installation for Equinix HK3 Data Centre, Tsuen Wan, H.K.

#### Equinix HK3數據中心加裝冷凍主機 - 香港 · 荃灣



We are engaged as M&E consultant for a new chiller installation of Equinix's data centre at Tsuen Wan - "HK3 Data Centre". The project comprises the installation of a new chiller, the modification of existing plant control system and Building Management System BMS to suit the operation of the new chiller. Talent carries out M&E design and project administration for the project.

我們獲Equinix 所聘，為其於荃灣區的數據中心 - "HK3數據中心" 加裝冷凍主機項目進行機電設計。工程內容包括安裝冷凍主機，調整原有冷凍機組控制系統及中央控制系統，以配合新冷凍主機的運轉。滙智負責機電設計及項目管理工作。

### Extension and Renovation Works for Christian Alliance P.C. Lau Memorial International School, Kowloon City, HK

#### 宣道會劉平齋紀念國際學校翻新改造工程 - 香港 · 九龍城

The international school comprises of a 6-storey classroom block, a 3-storey auditorium, and an outdoor playground. The existing classroom block is to undergo major renovation. Works include addition of lifts and upgrading of the M&E installations. The existing auditorium will be redeveloped and converted to a complex building with a new assembly hall, 4-storey new classrooms and a roof playground. Talent carries out M&E design and project administration.



宣道會劉平齋紀念國際學校由一座6層教學樓，一座3層禮堂及一個室外球場組成。現有的教學樓將進行改造，當中包括新增電梯及各項機電系統的更新。另外，現有的禮堂將進行重建，轉化為一座綜合大樓，包括新禮堂，4層班房及一個天台球場。滙智為學校進行機電設計及施工管理工作。

### Gucci Stores in China

#### 古馳名店 - 中國

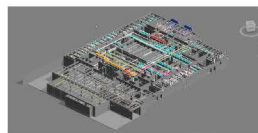
Following the completion of M&E design for 32 Gucci Stores in China in recent years, we have continued in working on Gucci stores in China. In 2017, we have completed 1 Gucci Store in Beijing with another 3 stores including Shanghai, Wuhan and Xian Stores expected to be completed before mid of 2018. We hope that we can become the long term partner with the client and the interior designer by providing technical expertise and close attendance to the projects.



繼近年完成32間於中國的古馳名店的機電設計，我們繼續服務古馳，為古馳在中國的其他分店進行機電顧問工作。2017年我們再次完成1間北京分店，並預計於2018年中完成上海、武漢及西安分店。我們希望能藉著技術能力及工作上的專注，成為業主及設計師的長期合作夥伴。

### Installation of Air-Conditioning System at Tai Wai Market, Tai Wai, H.K.

#### 大圍街市加裝空調系統工程 - 香港 · 大圍



The project is to add central chiller plant, air-conditioning and mechanical ventilation system, separate transformer and main power supply system, and to carry out associated improvement works at the existing market with a view to enhance its operating environment. The area of market is about 4,000m<sup>2</sup>. Building Information Modeling (BIM) is to be used for layout configuration and combined building services coordination with due consideration of the existing constraints in the Market, and also phasing planning and as-built modelling at construction stage.



項目為現有街市加裝中央制冷機、空調及通風系統、獨立變壓裝置及供電系統，並進行相關改善措施，以提升街市的營運環境，街市面積約4,000m<sup>2</sup>。項目使用建築資訊模型(BIM)作建築佈置及機電管道綜合協調，並週詳考慮現有街市的限制，應用施工階段分階段策劃功能及竣工模型制作。

### Residential Re-Development at No. 1 & 3, South Bay Close, H.K.

#### 南灣坊1及3號住宅發展項目 - 香港 · 南灣

After completing two boutique hotels including Le Rivage Hotel at Connaught Road West and One96 at Queen's Road Central, we have another residential redevelopment in South Bay Close with total gross floor area of approximately 2,500m<sup>2</sup> from the same developer. The development comprises one or two blocks of deluxe residential tower together with a carpark, landscape garden and swimming pools. We hope that continuing collaboration with the client and team players renders the project progressing smoothly and in a cost effective way.



我們早前為同一發展商完成兩項精品酒店發展項目，包括干諾道西的Le Rivage及皇后大道中的壹96酒店。工作並不就此結束，另一項由同一發展商於南灣坊的2,500m<sup>2</sup>的住宅發展項目已步入設計階段。項目包括1或2座豪華住宅，並設有停車場、園林及泳池。與此發展商的長期合作，並項目團隊共事，令項目進展順利及更具成本效益。

### Commercial Re-Development at 27-31 Sugar Street, Causeway Bay, H.K.

#### 糖街27至31號商業發展項目 - 香港 · 銅鑼灣



The redevelopment combines two separate lots and buildings into a new single Ginza-style commercial building for restaurant and retail usage. There are also landscape garden on middle floors and roof floor. The total gross floor area is about 5,800m<sup>2</sup>. Talent carries out M&E design and project administration.

重建項目合併兩塊獨立地塊及大廈，重新建成一幢銀座式商業大樓，作餐廳及零售用途，並設中層及頂層園林設施，總面積約5,800m<sup>2</sup>。滙智負責項目的全機電設計及項目管理。

### Chiller Plant Renovation for MassMutual Tower, Lockhart Road, Wanchai, H.K.

#### 駱克道美國萬通大廈更換空調制冷系統 - 香港 · 灣仔

The development comprises 2 office towers sitting on a podium and equipped with two existing separate air cooled chiller plants. The existing chiller plants will be reconfigured and replaced by a new chiller plant with both air cooled and water cooled chillers with total capacity of 920T.R. for better energy efficiency, flexibility and reliability. Works also include upgrading of the air conditioning system such as the addition of 24-hour chilled water system.



項目由2幢辦公樓及裙樓組成，現設有兩組獨立空調主機系統。現有制冷機組會重新規劃並由更具能源效益、運行彈性及可靠性的風冷及水冷機組取代，總容量約920T.R.。改造亦包括空調系統的改進，並增設24小時空調冷凍水系統等。



# Company Sailboat Eagles Quest II completed her Round the World Sailing Expedition

## 帆船探索鷹號Eagles Quest II 完成環球航行



Sailboat Eagles Quest II completed her Round the World Sailing Expedition through the Canadian Arctic Ocean, the fabulous Northwest Passage, and arrived at HK on 17<sup>th</sup> November, 2017. The voyage was arranged by our director Captain KD Chu with sailing lovers from all over the world to join sections of the voyage. The sailboat departed HK on 22<sup>nd</sup> April 2016. The voyage passed through Taiwan, Japan, crossed North Pacific Ocean to Alaska, Canadian Arctic Northwest Passage, Greenland, passed through North Atlantic Ocean to Ireland in October 2016. The sailboat stayed in Crosshaven, Co Cork of Ireland for wintering. This year, the sailboat started from Ireland on 30 April and sailed along Atlantic coast of Europe into the Mediterranean, Egypt, Red Sea, Djibouti, Somalia water, Salalah of Oman. The boat sailed across North Indian Ocean to Maldives, Sri Lanka, Malaysia, Vietnam, Hainan Island and back to HK. **The total distance was about 23,000 NM.**

According to Chu, the most impressive scenes were the unique sceneries of the Arctic, Aurora Borealis, ocean creatures, and the cultures and hospitalities of the indigenous people Inuits. Apart from these, the grounding at Northwest Passage, crossing Atlantic Ocean meeting 2 storms where the boat was flooded with water, passing through the Red Sea and Somalia Water escorted by Chinese Battleship Yangzhou Warship, sailing up in strong current and monsoon when returning back to HK from Vietnam with the boat stopped twice in inclement weather were unforgettable and thrilling experiences.



"The chance of sailing the boat through the passage was very very low" Chu exclaimed. Besides the weather and some legs short handed, the passing of the boat through Canadian Arctic on time by a HK registered boat was difficult as Canada does not allow a boat sail directly to Canadian Arctic without reporting to a port with immigration officer on duty in BC. **The team almost gave up in Alaska** but received good news after direct contact with the inland immigration officer in Arctic approving us doing remote check-in in an Arctic Town Tuktoyaktuk.



EQ2 would not pass through the Somalia water without escort. Boat delivery companies gave up the delivery after checking the current piracy activities while the Chinese Navy had turned down the request for escort in March 2017. Through unrelenting requests for other possibilities of escort, EQ2 got a nod at the last moment when she was preparing to sail to Egypt to cross the Suez Canal. Or else, the boat would stay in Greece for years. **EQ2 being escorted by the Chinese Battleship Yang**

**Zhou Warship passed the Somalia water from Djibouti to Salalah of Oman.** Taking several days of rest in Salalah, Chu fell into the sea when climbing from pier into the sailboat on 27<sup>th</sup> August 2017. **He hit the boat before falling into the sea and hurt his chest, neck and jaw. He felt unconscious for a short while facing death and woke up under water.** Thank God for the rescue and caring though it took 1.5 months to recover from the injury. In order not to delay the voyage affecting the 3 crew members who would board in the next port, Male of Maldives, EQ2 had to sail on the following day towards Maldives and had to sail fast to shorten the duration from 9 days to 8 days. During the journey, EQ2 met frequently squalls with heavy rain and strong wind. Wind soared up from 10+ knots to 30+knots in short time and usually lasted for 1 hour.

Throughout the journey, there were a lot of breakages. Almost all could be fixed **at sea or** in short period of 2 to 3 days **after reaching a port** enabling the boat to continue the voyage according to the original sailing schedule except the case from Vietnam back to HK. EQ2 met other boats sailing from HK for a HK to Vietnam Sailing Race. After leaving Nha Trang on 25<sup>th</sup> Oct, all 4 boats heading to HK met strong wind and current. 2 boats turned back to Nha Trang. Most of the other boats continued their voyage heading south to Malaysia. Only EQ2 and another sailboat continued sailing North. **Because of heavy weather, the boat stopped at Quy Nhon to let the crew to get some rest.** Seawater got into the fuel tanks through vent pipes of the tanks after sailing for 3 days towards H.K. When the water laden diesel got into the engine, the engine failed. EQ2 had to get into Sanya for clearing the seawater from the engine, fuel tanks and pipes together with changing another group of crew. When a typhoon **hitting Sanya** weakened on 15<sup>th</sup> November 2017, EQ2 with 3 crew from HK, including our Beijing Team Leader Benson Ho sailed the boat back to HK. **EQ2 arrived at Causeway Bay RHKYC on 17<sup>th</sup> November 2017** and completed the voyage leaving a profound memory.



There were 57 crew members participating in this circumnavigation voyage with 29 for the 1st section from HK to Ireland through the Arctic Ocean and 28 for 2<sup>nd</sup> section from Ireland back to HK through Somalia. Chu was the only 1 sailing the whole passage while other crew joined partial voyages. Minimum number of crew on board was 2 and maximum no of crew was 7.



公司帆船探索鷹號Eagles Quest II於2017年11月17日完成穿越北極西北航道環球航行返抵香港。探索鷹號由公司董事朱棋端及來自香港及各國船員分段加入參與，於2016年4月22日從香港出發，途經台灣、日本、跨越北太平洋、阿拉斯加、加拿大北極西北航道、格陵蘭、經北大西洋抵達愛爾蘭，在愛爾蘭過冬。今年4月30日從愛爾蘭出發，經歐洲西岸入地中海、埃及及入紅海、吉布提、索馬里海域、阿曼，經北印度洋往馬耳代夫、斯里蘭卡及馬來西亞、越南、中國海南等地返港，**全程23,000海哩。**

船長朱棋端表示，過去一年多的海上旅程，令他難忘的事數之不盡，北極獨特景貌、極光、海洋生物、北極熊、當地因紐特人的風土人情及熱情款待，當然也不少得的驚濤駭浪場面，船隊曾於北極西北航道攔淺，經過大西洋曾遇到兩個風暴，船隻大量進水，經過紅海及索馬里水域，由中國護衛艦揚州艦護航及返港時遇水流及船員不適應強風巨浪而兩度停船等。

"能通過北極西北航道的機會極低。"朱棋端憶述。除了天氣和航行中機件損壞情況之外，香港註冊的船隻要按時通過加拿大北極幾近不可能。加拿大不允許中國船隻直接駛向加拿大北極，需首先駛往BC省有移民官當值的港口辦理入境手續。在阿拉斯加幾乎放棄及改變航行計劃，通過直接聯絡北極內陸移民官申請，最後獲批准直接駛往北極城鎮Tuktoyaktuk辦理進境手續。

假若沒有護航或採用船隻運送服務，EQ2將不會進入索馬里水域。中國海軍在2017年3月已拒絕了EQ2的護航申請，送船公司在核實當時該海域的海盜活躍情況後放棄提供送船服務。在向香港海上救援協同中心查詢其他可能性後，EQ2在準備前往埃及及渡過蘇伊士運河的最後一刻得到了中國海軍批准提供特別護航。否則，帆船將留在希臘及地中海數年而不能返港。

中國戰艦揚州艦從吉布提護航EQ2通過索馬里水域至阿曼的塞拉萊。在塞拉萊休整了幾天，2017年8月27日，朱棋端在塞拉萊碼頭落帆船時墮海，撞傷胸部、頸項及下顎，短暫失去知覺，在水中回復知覺後游上水面，雖然傷勢1個半月後才康復，但仍因天父的搭救而感恩。為不想延遲航程，令下站上船的5名船員更改機票及假期，翌日在塞拉萊負傷啟航往馬耳代夫，船程8天，途中多次遇上局部暴風雨，風力迅間由10多節強風升至30多節烈風，一般持續一小時，朱先生需負傷啟航，並忍著痛楚放帆收帆。

整個旅程中機件及儀錶等多次損壞，大部份在海中或到岸2至3天短時間內修復，令帆船能按照原時間計劃航行，但越南返回香港則不同。EQ2與從香港駛到越南，參加香港至越南帆船賽的其他帆船會合。10月25日離開越南芽莊，大部份繼續南下馬來西亞，其中4艘返回香港，所有駛往香港的4艘船都遇到了強風和水流。2艘船折返芽莊。開船一天由於風浪大令船員不適，船在越南歸仁港停船讓船員休息1天後再繼續前航，啟航後3天油箱進了海水而令主機失靈，故找拖船將帆船拖入海南島三亞港停船，清理主機燃油管內海水、修好主機，並更換船員後，在颱風略過三亞後的11月15日，由從香港飛至的3名船員，包括北京分公司主管何冠熾先生，將帆船駛回香港，11月17日15:30抵達銅鑼灣香港遊艇會，為本次航程劃上句號，留下深刻且美好的回憶。



本次行程總共有57人參與，第一段香港至愛爾蘭合共人數29人，愛爾蘭至香港合共人數28人，除船長朱棋端行畢全程外，其他船員分段參與。行程中船上最少人數2人，最多人數7人。

## Mountain Expedition 2018 - Peak Qizhi at Tibet

### 2018登山之旅 - 西藏啟孜峰

Mountain Expedition has been stopped for years. As requested by some nature lover friends and colleagues, we are planning to trek the **Peak Qizhi (6,207m)** in the summer of 2018. Peak Qizhi is 110km away from Lhasa. It is an entry grade snow capped mountain. Though no technical climbing skill is required, it is physically demanding and needs certain acclimatization ability. It takes a week touring and 4 to 5 days for trekking the mountain. **The tour covers a world-class route to scenic and culturally rich destinations.** Full course will take 14 days while 10 days would be a minimum including touring (and acclimatization) at Lhasa and the vicinity. We also plan to **travel to the Base Camp of Mt Everest** at Tibet side if time and weather permit. Sequence and routes are meticulously scheduled that we would go to high altitude scenic lake region Namouci (4,800m) for acclimatization instead of idling at the base camp. Tibet Mountaineering School will send supporting team to help us to reach the summit. For detail of route, scenic spots and budget, please visit our website.



我們已數年沒舉辦登山活動，在之前的參加者及同事支持及要求下，我們計劃在2018年夏季**攀登西藏6,207m啟孜峰**。啟孜峰離拉薩約110km，是入門級雪山，不需要專業攀山技術，但體能及高山適應仍是必要的。登山約需4至5天，登山前約用一週時間觀光及適應。**所到之處的風景與文化均達世界級水平**，全程約需14天，若只為登山、遊覽拉薩及週邊地區則需10天(含高度適應)。若時間及天氣狀況許可，將到**珠穆朗瑪大本營**。我們將小心策劃行程及路線，安排登山前於旅遊景點進行高度適應，如4,800m的納木錯湖，這可省卻在相同高度的大本營呆等。西藏登山學校會派出隊伍支援這次登山計劃。請瀏覽我們的網頁，得知詳細行程、景點及預算費用。

Head Office:	Unit 203, 2/F, Dominion Centre, 43-59 Queen's Road East, Wanchai, Hong Kong 香港灣仔皇后大道東 43-59 號東美中心 2樓 203 室 t: +852 2838 9133 f: +852 2836 0750 e-mail: info@talentme.com 總公司 web-site: www.talentme.com
Beijing Office:	Room 415, Block B, Taihe Culture Building, A1 Chengjialin, Balizhuang, Gaobeidian, China 北京市朝陽區高碑店八里莊陳家林甲1號泰禾文化大廈B座415室 郵編: 100025 t: +86 10 6528 9740 f: +86 10 6514 1698 e-mail: bj@talentme.com
Shanghai Office:	Room A, 2/F, 586 Panyu Road, Changning District Shanghai, China. 上海市長寧區番禺路 586 號東方商務大廈 2A 室 郵編: 200052 t: +86 21 5108 5770 f: +86 21 5258 3100 e-mail: sh@talentme.com
Shenzhen Office:	Room 15A 18, Floor 14, Pacific Building Jiabin Road, Luohu District, Shenzhen, China. 中國深圳市羅湖區嘉寶路太平洋商貿大廈14樓15A 18室 郵編: 518001 t: 86 755 2219 5358 f: 86 755 2219 5356 e-mail: sz@talentme.com
Chengdu Office:	Room 805, 2/F Sunshine New Center, 827 East Five Sections of Yihuan Road, Jinjiang District, Chengdu 四川省成都市錦江區一環路東五段827號陽光新業中心2樓805室 郵編: 610000 t: 86 28 6202 3391 e-mail: chengdu@talentme.com