



Company News

HK Green Building Award 2016 香港2016環保建築大獎



Talent is proud to have another project getting the Green Building Award. "Tung Wah Group of Hospitals Jockey Club Rehabilitation Complex" located at 4 Welfare Road, Aberdeen is a renovation project with 2 storeys added to an existing building and an increase of 75 bed spaces. The renovation rejuvenating a green roof provided an environmentally sustainable rehabilitation atmosphere for the occupants. The premises provide training facilities for mentally disabled groups. The usages include health care facilities with dormitories, training rooms, multi-purpose rooms and office. **The project got the Finalist Award in Existing Buildings Category.**

This is another encouragement to our mission of providing green strategies, environmental friendly schemes and sustainable M&E systems to our clients. **We believe that we still have a lot to explore and learn.** Our customers are well informed of the costs and benefits of our designs so that appropriate decisions can be made. **There are also clients who share the same vision with us and are willing to sacrifice a bit for creating sustainable works.**



滙智又一項目獲取香港建築議會所頒發的"2016年環保建築大獎"。"東華三院賽馬會藝進綜合職業復康中心及藝博宿舍"位於香港仔惠福道4號，在原大廈加建兩層，並增加75個宿位。這次改造活化了一個可持續的綠化屋頂平台，向院友提供有助治療的環境。中心為弱能人士提供培訓設施。設施主要有康健護理、宿舍、培訓室、多用途室及辦公室。項目獲得既有建築類別的入圍獎。

這是我們的綠色大使命的一個鼓勵，我們深信仍需努力學習及探求。我們會繼續投入資源及力量，向客戶推薦綠色策略及可持續的機電系統。客戶對這些策略有充份了解，清楚其優點及代價，從而作出適當的決策。我們的客戶中不乏同路人，他們也具願意付出的心，為地球可以持續而付出代價。

HKIE Scheme A Trainees 香港工程師學會大學畢業生訓練計劃 "A"

To cope with our future needs for sufficient supply of high caliber engineers, **we continue to enroll graduate trainees last year.** Vincent graduated from the Hong Kong Polytechnic University studying Building Services Engineering. Lucy graduated from the City University studying Building Services Engineering while Jonathan graduated from the Polytechnic University studying Mechanical Engineering. Marco, who has been working with us for years, joined the training scheme after completing his part time bachelor degree in Electrical Engineering from the Polytechnic University. **Training Placements for the current situation should be able to meet with our growth need but may not be so after 1 to 2 years.** So far, we can still maintain a low staff turnover rate and high morale. We strive to maintain a balance of works and lives of our colleagues to avoid burn out.



為公司日後發展做好人才儲備，我們去年繼續招聘剛從大學畢業的受訓生。江銘誠來自香港理工大學屋宇裝備工程系、林露畢業於城市大學屋宇裝備工程系、羅傑麟畢業於香港理工大學機械工程系。已服務公司數年的陳均祥，在去年完成香港理工大學電機工程學士課程後，亦加入受訓生行列。培訓名額暫時足夠應付我們增長所需，但1至2年後則不能確定。至今，我們仍維持低員工流失率及高工作士氣，我們致力維持一個工作與生活均衡的狀態。

Team Building Tour – Vacation Subsidy 團隊建立 — 每年旅遊贊助

Last year, again, team building activities were dominated by fascinating tours filled with hardship but enjoyable tours. A group of colleagues opted for **Historic and Romantic trip in Germany, Austria and Hungary.** The visit to the Berlin Wall, the birthplace of Mozart at Salzburg and the Fisherman's Bastion enriched the colleagues' life experience. This year, colleagues continue to organize **self-driving tour to New Zealand,** an island nation in the Southwestern Pacific Ocean, famous for their extreme spot and the beautiful landscape.

去年，刻苦但心情舒暢，並迷人景緻之旅成為公司團隊建立旅遊的主流選擇。一批同事前往德國、奧地利，以及匈牙利進行歷史浪漫之旅。走過柏林圍牆，經過莫扎特出生地薩爾斯堡，到達漁人堡，豐富同事們人生的閱歷。今年，同事計劃到太平洋西南部 — 紐西蘭，欣賞壯麗風景之餘亦再次挑戰極限。



PROJECT 項目

Projects Completed Recently (近期竣工項目)

AIS Data Center, Chonburi, Thailand

AIS數據中心 - 泰國·春武里府

Following the engagement for the M&E design verification services for COL Data Centre in HK by Huawei Tech. Investment Co. Ltd, we commissioned again for the **AIS Data Centre project in Thailand**. This is the first Data Centre project we work in Thailand. We hope that there would be more chance to participate in Data Centre project in the South East Asia in the near future. **The single storey data centre is with floor area around 1,700m² and designed to tier III standard.** Mission critical facilities are provided including new generators, chiller plants and UPS system. Talent carried out quality assurance service for this project.



繼年前與華為技術投資有限公司合作參與香港COL數據中心項目的機電設計審核工作，我們又獲聘進行並已完成**泰國 AIS 數據中心**的顧問工作。我們亦首次參與泰國地區的數據中心項目，希望日後在東南亞地區有更多合作發展。**數據中心以三級的標準設計，面積約為1,700m²**。中心設有精密空調、精準供電、備用發電機及無間斷電源等系統。進智負責為項目的機電系統提供品質保證服務。

Major Renovation for Hau Tak Shopping Centre, Tseung Kwan O, H.K.

厚德商場翻新 - 香港·將軍澳

The premise consists of East Wing and West Wing, each of 3 storeys with **total area of around 6,000m² and underwent renovation.** Works included upgrading of M&E installations, improvement of existing lifts for disabled. This major renovation provided a facelift to the commercial complex.



厚德商場共有東西兩翼，每翼各有3層，**總面積約6,000m²，已完成翻新工作。**項目包括各項機電系統及傷殘電梯的提升等。經改造後令商場耳目一新。

Major Renovation for Wai Wah Commercial Centre, 6 Wilmer Street, Sheung Wan, H.K.

威利麻街6號威華商業中心翻新 - 香港·上環

Wai Wah Commercial Centre is an existing 27-storeyed commercial building and underwent renovation and conversion. It comprises **24 storeys of offices, 4 storeys of retails and F&Bs.** Renovation included the renewal of all M&E services, replacement of major plants and upgrading of the electrical supply. After renovation, the building was provided with a new modern outlook and facilities upgrade. This is the first project Talent works with the client and the Architect and before the completion of the project, we were **awarded another project from the client.** We hope that we can maintain a good service and deliver technical expertise to sustain the working relationship with the client and the Architect.

威華商業中心本為27層商業大廈，經已完成全面翻新及改造，成為**24層辦公區及4層商店及餐飲。**改造包含各機電系統更新，更換機電設備，並配電系統的提升等。項目改造後令威華商業中心擁有現代化的外貌及設施。這是進智為業主及建築師進行的首樁項目，並在項目完工前，**我們再次獲業主聘用參與另一項目，**我們希望藉著提供良好服務及專業技術知識，能與業主及建築師維持良好合作關係。

Alteration, Additions, Repairs and Improvement Works for Hong Kong Baptist University, Kowloon Tong, H.K.

香港浸會大學翻新改造工程 - 香港·九龍塘

The project involves **conversion, alteration, consequential and spatial re-planning** for several existing premises inside campus including **Yeung Shui Sang Building, Sir Run Run Shaw Building, teaching laboratories in Ho Sin Hang Campus and laboratories for Science Faculty.** Works were separated into different phases to suit the class schedules. Talent carried out M&E design, coordination for operational needs and project administration for the works. Works for Yeung Shui Sang Building, part of renovation areas in Sir Run Run Building and Teaching Laboratories were completed and put into operations.

項目為香港浸會大學內多幢大樓包括楊瑞生紀念館、邵逸夫大樓、何善衡校園之教學實驗室及科學院之實驗室進行翻新、改造及重新規劃。為配合校園的上課時間，翻新改造工程分多個階段進行設計及施工。進智為配合校園運作要求進行機電系統設計、協調及項目管理工作。整座楊瑞生紀念館、部份邵逸夫大樓和實驗室的改造工程已完成並投入使用。

A&A Works for Market Portion for Tin Yiu I & Tin Yiu II Estate, Tin Shui Wai, H.K.

天耀邨 I 及 II 期街市改造 - 香港·天水圍

The project was the market portion (total floor area of around **3,000m²**) for a Link's shopping centre and underwent major renovation for converting it into a shopping centre. Works comprise new provisions of the main plants including chiller plant and power transforming station. The renovation provided a facelift to the shopping centre.

項目為領展轄下的商場中的街市部份重新翻新為商場，改造**面積約3,000m²**。項目包括重新設計各項機電主系統，包括更換制冷機系統、變壓及配電站等，經改造後令商場耳目一新。

Major Renovation for Temple Mall North (Lung Cheung Plaza), Wong Tai Sin, H.K.

黃大仙中心北館(原名龍翔廣場)翻新 - 香港·黃大仙



One of the Link's large-size shopping centers with **total area of around 36,000m² underwent re-planning and facelift** to provide an outlook combining both modern and traditional characteristics of Wong Tai Sin Temple. Talent carried out M&E design and project administration for the re-provision of M&E services and upgrading of main M&E plants such as transformer room and power distribution system. With the renovation carried out phase by phase, the project was finally completed in 1st quarter of 2016.

項目為領展轄下其中一個大型購物中心，**面積約36,000m²**。經改造後擁有既現代化又結合黃大仙廟的傳統特色。進智負責機電系統改造設計及項目管理，改造項目包括各項機電系統的提升，其中包含變壓及配電站等。翻新工程分多個階段進行，至2016年第1季全面完成。



New Cooling Tower Plant for One Island East, Quarry Bay, H.K.

港島東中心冷卻塔機組 - 香港·鰂魚涌



We were engaged by Swire Properties Management Limited to undertake consultancy for the provision of new cooling tower plant for the 68-storeyed Grade A office building, following the replanning of the heat rejection system of the building. The plant with 3 new cooling towers locating on the roof of the building **provides heat rejection for the existing chiller plant of 6,000TR cooling capacity.** Spaces and provisions are allowed in the design for further upgrading in the future.

本司受僱於太古地產物業管理有限公司，為此棟68層甲級辦公大樓從新規劃空調冷卻系統，提供新造冷卻塔機組的機電顧問服務。**3組新冷卻塔機組位於大樓屋頂，為現有共6,000冷噸之水冷機系統提供散熱容量。**在設計中亦預留了將來進一步提升容量所需的空間及設施。

本司受僱於太古地產物業管理有限公司，為此棟68層甲級辦公大樓從新規劃空調冷卻系統，提供新造冷卻塔機組的機電顧問服務。**3組新冷卻塔機組位於大樓屋頂，為現有共6,000冷噸之水冷機系統提供散熱容量。**在設計中亦預留了將來進一步提升容量所需的空間及設施。

Kennedy Terrace at 2, 6, 8 Kennedy Road, H.K.

堅尼地道2, 6, 8號住宅發展 - 香港·中環

The redevelopment comprises simplex and duplex flat units, clubhouse, carpark and sky garden with **total floor area of 12,000m² approximately.** Talent carried out M&E design and project administration. The original building before demolition was confirmed as Grade 2 Historical Building. The redevelopment **adopted the original architectural style of Neo-classic façade.**



重建項目包括分層單位及複式單位，並設會所、停車庫及空中花園等。**總建築面積約12,000m²**。進智負責本項目的全機電設計及項目管理。建築物未清拆前確定為二級歷史建築物，重建項目的**外牆與建保留原來建築物之新古典建築特色。**

Refurbishment of Sitting-Out-Area at Chiu Tam Path, Tsuen Wan, H.K.

照潭徑休憩處翻新改造 - 香港·荃灣

The Sitting-Out-Area is a long linear piece of land with approximately 90m long and 10m wide at its widest part. The refurbishment works include **enhancement of the overall functioning, greenery, safety and disability access of the areas.** New irrigation, lighting, and power supply system were provided. After refurbishment, it created a better quality in terms of environment and open space for the users.



休憩處為一塊長形地段，約90米長和最闊面10米闊，翻新改造項目包括**改善休憩處之整體用途、綠化、安全及無障礙通道設施，並增設綠化灌溉水系統、照明及供電系統。**完成改造工程後，休憩處耳目一新，為使用者提供舒適環境和優質公共使用空間。

Chiller Plant Replacement for Man Yee Building, Central, H.K.

萬宜大廈更換空調製冷系統 - 香港·中環



The building consists of 3 air-cooled chiller plants located on podium M&E floor and roof respectively. The existing plants were replaced by **new water-cooled chillers with total capacity of 2,000TR with better energy efficiency** to serve over 27,000m² of grade A office and a 4-level 7,500m² shopping arcade in the prime commercial district of the Central in HK Island. The replacement work also included upgrading of existing 24-hour chiller system for office floors.

大廈位於港島中環商業核心地段，設有3組分別位於裙樓機電層和屋頂的風冷機組。現有風冷機組**更換成更具能源效益的水冷機組，總容量為2,000冷噸，提供冷凍水服務與超過27,000m²的甲級辦公樓和一座4層高，達7,500m²的購物商場基座。**這次更換工程還包括提昇現有辦公樓24小時風冷空調機組系統等。

Feasibility Study for Thomson Reuters Data Centre, Shatin, H.K.

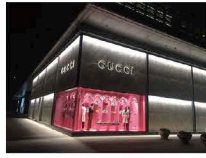
湯森路透數據中心可行性研究 - 香港·沙田

Various Feasibility Studies were carried out for Thomson Reuters Data Centre at Yuen Chau Kok. The Data Centre is with total floor area of 1,500m². The feasibility studies include relocation of other Data Centre Equipment to Yuen Chau Kwok Data Centre, BMS Replacement and Cold Aisle Containment analysis. 項目為位於圓州角之湯森路透數據中心進行多項可行性研究。數據中心總面積為1,500m²。可行性研究包括將現有數據中心設備搬遷至圓州角數據中心，更換機宇自控系統及冷通道屏蔽研究。

Gucci Stores in China

古馳名店 - 中國

Following the completion of M&E design for 31 Gucci Stores in China in recent years, we have continued in working on Gucci stores in China. In 2016, we have completed a Gucci Store in Hualian Shin Kong Department Store in Beijing. We hope that we can become the long term partner with the client and the interior designer by providing technical expertise and close attendance to the projects.



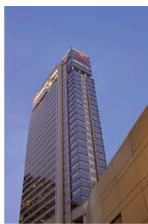
繼近年完成31間古馳於中國名店的機電設計，我們繼續服務古馳，為古馳其他在中國的分店進行機電顧問工作。2016年我們再次完成1間位於北京華聯新光百貨的分店。我們希望能藉著技術能力及工作上的專注，成為業主及設計師的長期合作伙伴。

New Commissions 新任務

Condition Survey for M&E Main Plants for Crowne Plaza Hong Kong Causeway Bay

香港銅鑼灣皇冠假日酒店 - 香港·銅鑼灣

We are engaged in the condition survey for M&E Main Plants for Crowne Plaza Hong Kong in Causeway Bay. The hotel is with 263 guest rooms and has been operating since 2009. Talent carries out condition surveys and functional tests for existing M&E main plants including chiller plant system, air handling system, main switchboards, plumbing & drainage system, fire services system, filtration system of swimming pool, building management system, etc. Recommendations are proposed to improve the present situation and to re-commission the existing systems to enable the smooth and efficient operations of the M&E Systems.



我們受僱為香港銅鑼灣皇冠假日酒店之現有機電系統進行運作考核及測試。酒店於2009年開業，設263間客房。滙智負責為現有機電系統包括制冷機組、風處理機、主配電櫃、給排水系統、游泳池過濾系統、屋宇自控系統等進行運作考核及測試，分析所存問題並建議改善方案及建議重新調校投入使用，令機電系統運行暢順及改善能效。

Residential Development at YLTL527, Yuen Long, H.K.

元朗住宅發展 - 香港·元朗



The development consists of one block of 8-storeyed residential tower together with shops and clubhouse with total floor area of around 2,000m². Open kitchen design is adopted for studio flats in considerations of modern look and flexible area usage. The scope of consultancy includes M&E design and project administration.

項目由1幢8層高住宅樓、商舖及會所組成，總面積約2,000m²。顧問服務包括全部機電系統設計及項目管理。單位採用開放式廚房設計，以達至時尚及較富彈性的空間運用。

Two High-Ended Supermarkets in Shanghai, China

兩所高級超市 - 中國·上海

The two foreign invested high-ended supermarkets comprise food outlets, lifestyle products and food markets with total floor area of approximately 4,000m² and 3,000m² respectively. Talent carries out M&E design and project administration for the projects. The two projects are due to completion by mid of 2017 and 3rd quarter of 2017 respectively.

兩所境外資金投資的高級超市設有餐飲、生活用品售賣面積及美食市場，每所超市的總面積分別約4,000m²及3,000m²。滙智進行機電設計及施工管理，項目預計於2017年中及2017年第三季竣工並投入使用。

Façade Enhancement Works at The Bank of China Building, Central, H.K.

中國銀行大廈外牆改造項目 - 香港·中環

We are engaged in the Mechanical & Electrical consultancy services for façade enhancement works of this Grade 1 historic building and well-known local landmark in Central. Works include enhancement of the existing façade and roof by providing lighting effect and lightboxes installation, associated power supply and chiller plant modification. Works are carried out in 2 phases. The whole installation is expected to be completed by September 2017. Close co-ordination and swift decision are critical to the timely completion of the tightly scheduled project.



我們很榮幸獲聘為此位於中環之著名地標並確定為一級歷史建築物之外牆改造項目進行機電設計，工程包括為現有外牆及天台頂層進行改造及提供燈光效果、配電系統及制冷機系統等。工程分兩期進行，整個工程預計於2017年9月竣工，團隊間的緊密配合及快速的決策是項目如期完工的重要因素。

Renovation for Residential Development at I.L. 7878, 8-12 Peak Road, H.K.

香港山頂道八至十二號住宅改造項目 - 香港·中半山

The existing premises comprise 2 blocks of 11-storeyed deluxe residential towers, 1 block of private house together with basement carpark and clubhouse with total domestic floor area of around 8,500m². Major renovations include two parts, common area and apartment area. The major scope of work includes M&E associated modification for re-partitioning, complete replacement and upgrading of existing M&E services and security system.



項目為現有2幢11層高豪華住宅樓、1幢獨立別墅，並地庫停車場及會所進行翻新改造，總住宅面積約8,500m²。項目包括兩部份，公共空間和住宅單元。項目包括提供機電設施改動設計以配合改造單元間格，更換和提升現有機電和保安系統。

Commercial Development at YLTL 532, Yuen Long, H.K.

元朗地段商業發展項目 - 香港·元朗



After completing three commercial developments in Kowloon Bay including 82,000m² "Skyline Tower", 58,000m² "The Exchange Tower" and 35,000m² Office Tower at Wang Chiu Road, we have another commercial development in Yuen Long with total floor area of approximately 46,000m² from the same developer. The development consists of office, shopping arcade and basement carpark. We hope that continuing collaboration with the client and team players renders the project progressing smoothly and in a cost effective way.

我們早前為同一發展商完成三項位於九龍灣的商業發展項目，包括82,000m²的宏天廣場、58,000m²的交易大樓及35,000m²的宏照道辦公樓。工作並不就此結束，另一項由同一發展商於元朗的46,000m²的商業發展項目已步入設計階段，項目設辦公、商業及地庫停車場。與此發展商的長期合作，並項目團隊共事，將令項目進展順利及更具成本效益。

Retail Network Project for Zung Fu at Chai Wan and Hung Hom, H.K.

仁孚改造項目 - 香港·柴灣及紅磡

We are engaged in the renovation works for Zung Fu (Mercedes Sales and Service Centres) in Chai Wan and Hung Hom with total area of about 17,000m² and 6,000m² respectively. Buildings are equipped as new/ renovated car sales and service centres. New car ramp will be constructed to facilitate the traffic for Chai Wan Project. Talent carries out the M&E design and project administration for the projects, particularly to upgrade the existing M&E systems including new/upgraded transformers, normal and essential power supply systems, chiller plant systems, fire services, plumbing & drainage systems and lift installations to achieve high energy efficiencies and fulfill the functional requirements of the projects.



我們受僱為柴灣及紅磡仁孚改造項目(奔馳汽車銷售及維修中心)進行機電設計，改造面積分別約17,000m²及6,000m²。項目包括汽車陳列室及維修服務中心，並於柴灣項目增設車輛斜通道通往各層。滙智負責機電設計及施工管理，更新現有機電系統，包括提升供電系統、制冷機組、消防系統、給排水系統及升降機系統等，以提升能源效益及滿足營運要求。

Renovation of Metro City Plaza Phase II Fresh Market, Tseung Kwan O, H.K.

新都城中心二期街市改造項目 - 香港·將軍澳



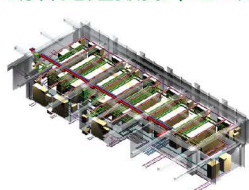
The renovation works for existing fresh market involve re-layout of stalls and circulation, re-provision of existing mechanical & electrical services and enhancement of existing façade with total renovation area of approximately 2,700m². During the renovation period, the portion of the fresh market is still being operated.

Meticulous phasing, services changeover, noise control and prevention of nuisance are vital to fresh market operation.

項目為現有街市進行翻新改造工程，改造面積約2,700m²。項目包括重新規劃街市攤檔及通道佈置、更新及提升機電系統和改善外牆設計。翻新期間部份街市需繼續營運，嚴謹的分期及施工安排，新舊系統交接，防止噪音及減低滋擾等，對街市的持續營運尤其重要。

Thomson Reuters Data Centre Phase 2 and Chiller Plant Replacement at Shatin, H.K.

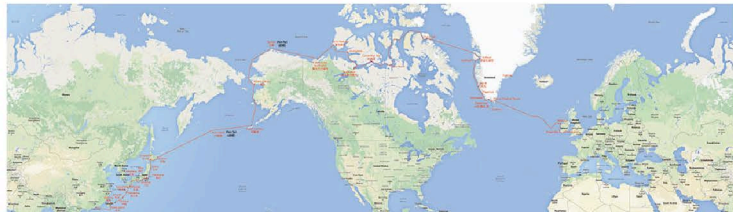
湯森路透數據中心2期及更換冷凍主機 - 香港·沙田



Following the engagement of the M&E design for Thomson Reuters Data Centre Phase 1 at Yuen Chau Kok, we are engaged again for the Phase 2 project together with the Chiller Plant Replacement. The Data Centre is with total floor area of 1,500m². The project comprises the replacement of chiller plant, the upgrading of CRAC units, the modification of electrical system and fire services installation.

繼年前進行湯森路透圓州角數據中心一期項目，我們再次受聘進行第二期工程及更換冷凍主機工作。數據中心面積合共1,500m²，工作包括重新設計及更換冷凍主機，對精密空調進行升級，以及調整配電系統及消防系統。

Arctic Expedition from HK to Europe through NW Passage 2016 北極西北航綫帆船 2016



Northwest Passage is a sea route connecting Asia and Europe through the Arctic Ocean at the North side of the North America. The route shortened the transportation from Europe to East Asia by 2000NM. Due to the unpredictable sea ice and uncharted sea areas, it is described by a contemporary sailing elite Jimmy Cornell as The Everest at the Sea.

The Company's sailboat Eagles Quest II (EQ2) departed HK on 22 April with 29 crews

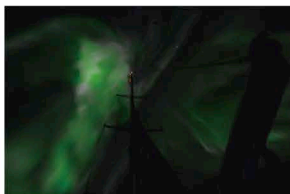
participating in different legs of the voyage from HK to Hokkaido. Apart from HK sailors, there were also Canadian, Taiwanese, Chinese and Japanese sailors joining this expedition. After departing HK, the equipment onboard broke down one by one but miraculously fixed in time. This enabled our crew to catch up with their flights and the voyage not to be delayed. During the course of sailing, equipment failure could be repaired, broken parts could be replaced just in time. Crossing Pacific was smooth at the beginning, we had land support to give us weather chart and wind information. After 7 days of sailing and motoring, the engine vibrated seriously when we started it. The propeller blades failed and the boat could only rely on wind to sail to destination. Wind was weak sometimes and the boat was drifted by current for 3 days in total. **It finally took 20 days to cross the North Pacific Ocean and arrived at Dutch Harbor of Alaska.** The boat also grounded in the Arctic Ocean. While waiting for help from the Coast Guard, the water level rose and the boat could get away from the shoal. The damage to the keel was only minor and did not stop the boat from continuing its voyage. The boat arrived at Ilulissat of Greenland on 17 Sept. **On the way to Ilulissat, there were some icebergs and growlers.** The boat passed them and broke some small ice. EQ2 sailed south afterwards and passed the Arctic circle of 66.33°N on 23 Sept. and completed the voyage for the Northwest Passage.



EQ2 cruised 16 days in Greenland before departing to Ireland. As the sailing season had ended, the wind and swell in North Atlantic strengthened. Suitable weather would not last more than 3 days. **EQ2 met 2 storms and 2 low pressures facing strong gale force at 35 to 45 knots with gust above 50 knots. The waves were about 6 meters with higher waves of 8 to 9 meters every few hours.** It was like watching a movie about maritime tragedy but this time the crew

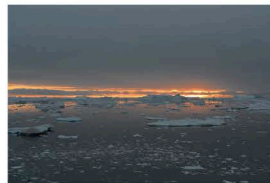


became the actors. The sea was covered with white waves and the wave tops broke away and were blown by strong wind forming water droplets like heavy rain. With these waves and seawater "rain", the crew in cockpit carrying out watch and steering would be wet throughout. Sometimes, the entire cockpit was flooded with inrush sea water. It took several minutes to drain the water. During the 13 days of voyage in Atlantic Ocean, period of wind strength lower than gale was only 3 days in aggregate. The damage to the boat was not severe but the autopilot and the bimini were damaged. Since the weather condition in autumn would deteriorate gradually, it was decided to sail the boat along the coast of Ireland to the south and reached Cork where there are mooring and repair facilities. EQ2 will continue its voyage from spring 2017 to Mediterranean, Indian Ocean and then back to HK.



Throughout the voyage, it was noticed that the icebergs, bergy bits, growlers and ice floes were few. EQ2 entered the Arctic Circle from Alaska and until Pond Inlet at the East side of Canada, **there were icebergs and some other ice but the coverage was below 5%.** This was lower than the average of the past years. In addition, the glaciers formerly flowing to the sea had retreated to the base of the mountains.

Witnessing the effects of global warming, it is high time for the continuing reduction of the release of CO₂ by human activities. However, the protocol for the reduction showed little progress. Coupled with the pricing of conventional fuels not reflecting the damages caused to the environment and hindering the developments and uses of the renewable energies, these have jeopardized the subsistence of human being and living things alike on earth.



西北航綫是一條連接亞洲東部及歐洲的海上航綫，途經北美洲北面的北冰洋，相對南面傳統航綫，從歐洲往亞洲東部能縮短2000海哩航程。由於難以預測的海冰狀況及大範圍未經測量的海域，被近代帆船先驅 Jimmy Cornell形容為海上的珠穆朗瑪峰。

公司帆船探索鷹號於4月22日起航離開香港，往北海道途中共有29名來自香港、台灣、中國、日本及居住香港的加拿大船員參與不同航段送行。出發後機件

屢次出現問題，但都能奇蹟地在極短時間內修復，令船員們能及時趕上飛機離開，而航程又不至延誤。

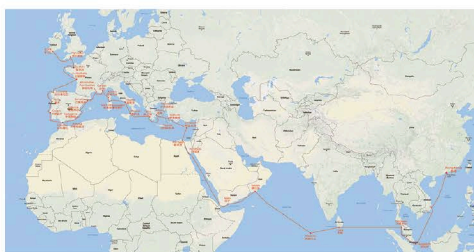
橫渡太平洋初段算是順利的，地面支援組按時發給我們的天氣圖和氣象信息。起航7天後螺旋槳損壞而只能靠風力航行，無風時船在海中飄流合共3天，最終以20天抵達阿拉斯加的荷蘭港。並在加拿大北極圈內擱淺，在等待救援時潮水上漲而脫險，擱淺對船底定水鋼板只造成輕微損傷，故不阻礙航程。帆船在9月17日抵達格陵蘭的Ilulissat，在航程的尾段遇到不少冰山及浮冰，帆船駛經冰塊，破了些細小冰塊，抵達目的港。隨後繼續南下，在9月23日越過北極圈66.33°N，橫渡北冰洋航段告終。船在格陵蘭巡航了16天後出發去愛爾蘭。由於已進入秋季，北大西洋風浪增強，船離格陵蘭遇上兩個風暴及兩個低氣旋，風力達烈風及暴風級，即35至45節，疾風超過50節，海浪約6米，每隔數小時左右會出現8至9米巨浪，在艙板倉如在看海濺電般，海面佈滿白頭浪，浪頂破碎時被強風吹成海水雨橫飛，海浪及海雨打進船上，在艙板倉船員全身濕透，有時候整個艙板倉充滿海水，需兩三分鐘才排走海水。13天的航程中強風以下風力合共不到3天，令船員們疲憊不堪。帆船損壞雖不算嚴重，但船上的自動導航及雨縫損壞，因季節已過風浪增強，故決定將帆船停在愛爾蘭進行維修及改進，待明年春天再經地中海及印度洋回港。

在帆船的整個過程中，海上浮冰稀少，進入北極圈後至加拿大東部Pond Inlet才真正遇到冰山，但海冰的覆蓋面積不到5%，比往年平均值低了不少。且冰川亦有後退情況，原流入海上的冰川，已往後退到山腳。眼見地球暖化加劇，二氧化碳大幅減排已刻不容緩，各國對減排又緩步不前，再加上傳統燃料的訂價未充分考慮其對環境破壞的成本，令再生能源的開發及應用進度受到阻礙，這都在威脅著人類甚至地球上生物的生存。

Sailing Trip from Europe to HK 2017 2017年從歐洲出發

After completing the Arctic Expedition, the company's boat Eagles Quest II (EQ2) berthed in Cork, Ireland. We will continue to sail the boat back to HK in 2017. Crew members will travel to Cork in late April to prepare for the boat and start sailing in early May. The boat will start from Ireland and sail into Mediterranean through Gibraltar. It will take the route along the North coast of Mediterranean passing through Spain, France, Italy, Greece, Turkey, Cyprus and reach Egypt. After passing Suez Canal, the biggest challenge is the Somalia water. EQ2 is likely to wait for other sailing crafts and form a convoy to pass through the Gulf of Aden to Salalah of Oman. The boat will sail southeast afterwards crossing Arabian Sea to Maldives. It may make a stop in Sri Lanka before crossing the North Indian Ocean to Malaysia. From Malaysia, EQ2 will take the shortest route to Strait of Melaka, Singapore, Vietnam and then back to HK.

Like last year, crew from different countries will join part of the trip to enjoy the voyage. Some who had experienced the once-a-life-time sailing expedition pledged to join the trip this year again. Several legs of the voyage are fascinating like Cote d'Azur, Aegean Sea, the Red Sea and Maldives. As berths are limited, please email to the captain Mr. KD Chu at kdchu@talentme.com if you are interested.



公司帆船探索鷹號在完成北極西北航綫的航程後，停泊在愛爾蘭的科克。帆船將在2017年繼續航程返回香港。船員將於4月下旬前往科克做準備，於5月初起航。帆船將離開愛爾蘭，通過直布羅陀駛入地中海。再沿著地中海北部海岸航行，途經西班牙、法國、意大利、希臘、土耳其、塞浦路斯後到達埃及。經過蘇伊士運河及紅海

後，將面臨最大的挑戰，即駛往也門及航行索馬里水域。探索鷹號需在也門等待其他帆船，組成一個船隊穿過亞丁灣到阿曼的塞拉萊。之後駛往東南方渡過阿拉伯海到馬爾代夫。帆船將在斯里蘭卡停留，然後穿過北印度洋到馬來西亞。從馬來西亞起，採用最短的路線到馬六甲海峽、新加坡、越南，然後駛返香港。

去年參與航程的船員們來自不同國家，體驗了一生人一次的遠洋帆船，其中大部份再度參與今年航程。這次航程中某些航段實在令人著迷，在海上航經法國蔚藍海岸、愛琴海、紅海和馬爾代夫等均是難得的機會。由於艙位有限，如感興趣，請盡速發送電子郵件給本次航程的船長朱棋端先生，地址kdchu@talentme.com。



Head Office: 總公司	Unit 203, 2/F, Dominion Centre, 43-59 Queen's Road East, Wanchai, Hong Kong 香港灣仔皇后大道東 43-59 號東美中心 2 樓 203 室 t: +852 2838 9133 f: +852 2836 0750 e-mail: info@talentme.com web-site: www.talentme.com
Beijing Office: 北京支部	Room 909, Building No.2 Guangqujiayuan (Midtown) Guangqumenwai, Dongcheng District, Beijing 北京市東城區廣渠門外廣渠家園(名敦道) 2 號樓 909 室 Post Code : 100022 t: +86 10 6528 9740 f: +86 10 6514 1698 e-mail: bj@talentme.com
Shanghai Office: 上海支部	Unit B, 5/F, Nanyang Enterprise Building, 667 Pan Yu Road, Shanghai, China. 中國上海市番禺路 667 號南洋實業大樓 5 樓 B 室 Post Code: 200030 t: +86 21 5108 5770 f: +86 21 5258 3100 e-mail: sh@talentme.com
Shenzhen Office: 深圳支部	Room 15A 18, Floor 14, Pacific Building Jibin Road, Luohu District, Shenzhen, China. 中國深圳市羅湖區嘉寶路太平洋商貿大廈14樓15A 18室 Post Code : 518001 t: 86 755 2219 5358 f: 86 755 2219 5356 e-mail: sz@talentme.com
Chengdu Office: 成都支部	Room 805, 2/F Sunshine New Center, 87 East Five Sections of Yihuan Road, Jinjiang District, Chengdu 四川省成都市錦江區一環路東五段87號陽光新中心2號樓805室 郵編: 610000 t: 86 28 6898 5566 f: 86 28 6202 3595 e-mail: chengdu@talentme.com