



## Company News

### FuturArc Green Leadership Award 2015

Talent is proud to have a project China Resources Group Headquarter Complex getting the "FuturArc Green Leadership Award 2015". FuturArc Green Leadership Award promotes innovative and ecologically responsible buildings in Asia. The competition recognizes the team behind a completed project : developer, architects, consultants and contractors, who have collectively pushed the limits and set definition of what a Green building is in Asia.



滙智參與的華潤集團總部建築群項目獲取 "FuturArc Green Leadership Award 2015"。FuturArc Green Leadership Award 旨在推動創新、對生態環境抱有責任的亞洲建築。比賽表彰項目背後的團隊，即發展商、建築師、顧問及承建商，團隊總體對亞洲綠色建築的積極推動所付出的努力。

### Promotion to Associate Director – Ir. Dora Ho 晉昇高級聯值董事 — 何麗嫦女士



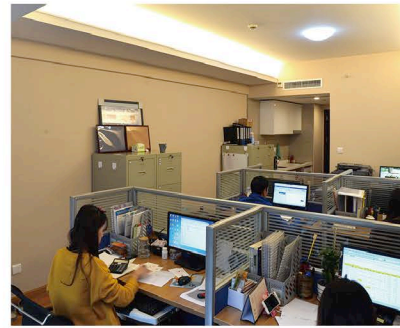
Dora graduated from the University of Hong Kong with first class honor degree in Mechanical Engineering in 1996. She holds a Master Degree in Building Services Engineering and is a Chartered Engineer. She joined Talent as graduate trainee in 1997 and was promoted to Associate in 2008. Through years of relentless hard work and focusing on projects' and clients' needs, she won countless compliments and appreciations from project teams. She developed an analytical mind and handled projects cautiously at a very early stage of her career. This has eased our burden on the high demand on quality project team leader. Her experiences cover office tower, industrial and research centre, IT facilities (call centre, data centre, network control centre), energy saving etc. and specializes on formulation of M&E schemes and analytical studies. We are delighted to have another member to steer the direction of the company.

何麗嫦女士於1996年畢業於香港大學，獲機械工程一級榮譽學士學位，隨後獲取屋宇裝備工程學碩士學位及英國特許工程師資格。何女士於1997年加入滙智作為受訓畢業生，於2008年晉昇為高級聯值董事。其過人的分析能力及謹慎處事作風，經年累月的辛勤工作及專注於項目及業主目標，已取得業主及項目團隊的信賴及好評，她減輕了我們缺乏資深項目主管的負擔。何女士的經驗涵蓋辦公樓、科研、工業、資訊科技設施(電話支援中心、數據中心、網絡監控中心)、節約能源等，專長於機電方案研究、定案及系統分析。我們喜見多一位伙伴加入公司的決策團隊。

何麗嫦女士於1996年畢業於香港大學，獲機械工程一級榮譽學士學位，隨後獲取屋宇裝備工程學碩士學位及英國特許工程師資格。何女士於1997年加入滙智作為受訓畢業生，於2008年晉昇為高級聯值董事。其過人的分析能力及謹慎處事作風，經年累月的辛勤工作及專注於項目及業主目標，已取得業主及項目團隊的信賴及好評，她減輕了我們缺乏資深項目主管的負擔。何女士的經驗涵蓋辦公樓、科研、工業、資訊科技設施(電話支援中心、數據中心、網絡監控中心)、節約能源等，專長於機電方案研究、定案及系統分析。我們喜見多一位伙伴加入公司的決策團隊。

## 公司動態

### Relocation of our Chengdu Office 成都分公司搬遷



As the projects in Western China region were completed one by one and there is a tendency of market shrinkage in that area, we have decided to relocate our office to a new office of smaller scale to cope with the change. Although we do not like to see the downturn of the market, we have to accept the reality and make preparation for it. The new address and the contacts are printed at the back of this newsletter. We are consolidating our resources and formulating a long term strategy to withstand perhaps a long winter and with flexibility to cope with the market recovery.

隨着我們於中國西部的項目陸續竣工，我們在西部地區的工作量開始減退，故決定縮小辦公室的規模，遷往新的辦公室，以配合市場變遷。我們雖然不想看見市場下滑，但需要接受這個事實，並及早處作好準備。新地址及聯絡方式印在本簡訊的最後頁。我們在整合資源，制訂長期策略，以渡過可能較長的寒冬，但又帶靈活性地隨時迎接市場復甦。

### The Epic Cross-Country Cycling 跨省高原單車壯舉



Two colleagues who worked on the project in Shangri-La City (Diqing) started their cycling expedition from Shangri-La, Yunnan to Lhasa, Tibet after the completion of the project at the end of August 2015 travelling 1,600 km distance in 20 days. The route passed through 8 mountain passes with 2 at altitude over 5,000m and the other 6 between 4,000 and 5,000m. This is indeed a once-a-lifetime epic trip as they swore

not to do it again! Too harsh and painful with sore muscles most of the time. The very acts of these 2 young men, William and Michael, demonstrated us how courage and perseverance enabled them to achieve their goals or otherwise gave up and took bus ride at the middle of the trip.

兩位參與香格里拉市(迪慶)項目的同事，在15年9月項目結束後，騎自行車從雲南香格里拉前往西藏的拉薩，共花了20天行走了1,600km。行走路線繞過8座高山的山坳，2座山坳在海拔5,000m以上，其餘6座介乎4,000m



及5,000m間。這真的是一生人一次的壯舉，實在太艱苦嚴苛，肌肉經常處於酸痛狀態：“絕不會再多走一趟！”兩位年青同事王璋霖及楊鐵映的舉止，向我們示範了勇氣及堅持如何帶領他們達到目標，不然早就爬上公交車了。



# PROJECT 項目

## Projects Completed Recently (近期竣工項目)

### Mayfair by the Sea II at TPTL 200 & 201, Tai Po, H.K. 逸瓏灣 II - 香港·大埔 (TPTL 200 & 201)



The development comprises of **33 residential blocks and 12 villa houses** together with clubhouse, car parks, retails and landscape garden with **total floor area of 160,000m<sup>2</sup>** approximately. Talent carried out M&E design and project administration. The project is designed to obtain a platinum grade certification under the environmental standard HK Beam Plus.

項目由33幢住宅、12幢別墅及商業群房組成，並設會所、停車場、商舖及園林設施等。總建築面積約160,000m<sup>2</sup>。滙智負責項目的全機電設計及項目管理。項目按環境標準HK Beam Plus白金級別進行設計。

### Dragons Range at Kau To Shan, Shatin, HK 玖瓏山住宅發展 - 香港·沙田



Talent is again selected by this high end developer for the signature project. The project comprises **multiple high rise residential towers and is fitted with luxurious club house with total area of 129,700 m<sup>2</sup>**. This is the first project we work with the renowned Architect. We hope that it would be the prelude for the uninterrupted working relationship in the future. **The developer was keen on energy conservation, sustainability and green features** sharing the same vision with us. We had ample opportunities to carry out studies for these strategies and tactics. This is what our colleagues are longing for. The project was designed and constructed under the BEAM Plus environmental standard.

滙智再次獲選參與發展商此重點項目，項目由多幢高層住宅建築、並豪華會所組成，面積約129,700 m<sup>2</sup>。我們亦首次與享負盛名的項目建築師合作，希望日後合作無間。項目業主著重環保節能，我們不乏機會進行對可持續策略、綠色建築措施的研究機會，這也是同事不斷希望參與的工作。項目以環境標準BEAM Plus設計及興建。

### Cargo Consolidation Complex Data Centre for PCCW Solution, Kwai Chung, Hong Kong 貨櫃集運中心電訊盈科數據中心 - 香港·葵涌



The data centre consists of **9-storeyed equipment space with floor area around 12,600 m<sup>2</sup> and is designed to tier III standard**. Mission critical facilities are provided including new high voltage system, transformers, generators, chiller plants and UPS system. Talent carries out design, project administration for the project together with the upgrading of infrastructure for the centre. **All 3 phases were completed and put into**

operation in 2015. We are informed by our client to prepare for another new area. It is delightful to become the long term partner with the client.

設施共佔9個樓層，面積約12,600m<sup>2</sup>。關鍵設施包括精密空調、精確供電、不斷電源及後備發電機等，按T3級數據中心設置。滙智負責項目的機電設計、施工管理及綜合調試。一至三期工程全部於2015年竣工及投入使用。我們獲業主通知準備開始新一期數據中心的設計工作，能作為業主的長期合作伴夥，實感欣喜。

### COL Data Center, CableTV Tower, Tsuen Wan, H.K. COL數據中心 - 香港·荃灣

The single storey data centre is with floor area around **2,000m<sup>2</sup> and designed to tier III standard**. Mission critical facilities are provided including new generators, chiller plants and UPS system. Talent carries out design verification and integrated system testing services for "design and build" contractor, Huawei Tech. Investment Co., Ltd.



數據中心以三級的標準設計，面積約為2,000m<sup>2</sup>。中心設有精密空調，精準供電，備用發電機及無間斷電源等系統。滙智受僱於項目的設計及建造合約承辦商華為技術有限公司，為項目提供設計審核及綜合調試服務。

### E&M Consultancy Services for Citybus / NWFB Bus Depot Modification Works, H.K. 新巴及城巴車廠電力系統改造工程

The modification works needs **detail analysis on the existing power system and its usage**. Checking the power consumption, usage pattern and maximum demand record were carried out. With accurate information, **design can be cost effective and with high reliability**. The scope of work comprised the electrical design and project administration for the Electric Bus charging provisions in 3 depots of Citybus and New World First Bus.



電力改造工作特為增加電動巴士充電站而設，需對現有電力裝置及用電狀況進行詳細分析。耗電資料搜集器紀錄每輛車廠的耗電量、供電特性、最高用電負荷紀錄。在資料準確齊備的情況下，設計將更經濟及可靠。顧問服務為電力設計及項目管理。滙智負責城巴及新世界巴士的三間車廠的充電設施及供電配合提供設計及施工管理服務。

### Replacement of AFA System and Fire Services Installation Improvement Works at Link's Premises, H.K. 領匯物業更換火災自動報警系統及消防系統改善工程 - 香港



The 4 Link's premises including Tin Chak Shopping Centre, Fu Cheong Shopping Center, Po Tat Shopping Centre and Wah Lai Estate Car Park are existing premises built in 2001 / 2002. Talent is responsible for the design and project administration for the **AFA system replacement and Fire Services installation improvement works**. Reviewing existing fire services installations against operational requirements, proposing appropriate designs & solutions, and method statement for system changeover are the prime factors for reaching effective goals.

項目為領匯轄下四幢於2001-2002年建成的天澤商場、富昌商場、寶達商場及華荔邨停車場。因應更新現有火災自動報警系統及提升其他消防系統的需要，滙智負責消防系統改善工程的系統設計及項目管理。其中分析現有消防系統設計及運作的需要，從而提出合適改善方案及系統轉換方法，是達至優良成果的關鍵因素。

### Major Renovation for Tsing Yi Commercial Complex, Tsing Yi Estate, Tsing Yi 香港青衣商場翻新 - 香港·青衣

The **4-storeyed building with total area of around 5,500 m<sup>2</sup> underwent major renovation**. Works included installation of new chiller plant, replacement of existing lifts and upgrading of the M&E installations including power transformer station. This major renovation provided a facelift to the commercial complex.



青衣商場共有4層，總面積約5,500m<sup>2</sup>，進行了重新規劃及翻新。項目包括新增制冷機組、更換電梯、並各項機電系統的提升，其中亦包括變壓及配電站等。經改造後，商場的觀感煥然一新。

### Botania Bay at DD331, Lot 245, Cheung Sha, Lantau Island, H.K. 長沙別墅發展DD331, Lot 245 - 香港·大嶼山



The development comprises of **16 villas and club house facilities with total floor area of around 6,600m<sup>2</sup>**. Each house is furnished with a swimming pool and with ample greenery. Though remote from the city centre, the property characterized as solitude dwellings with sumptuous facilities. Talent carried out M&E design work for the project.

本發展由16幢別墅及會所設施組成，合共面積約6,600平方米。每間別墅設有獨立游泳池及草坪，雖然遠離香港市中心，但能體現隱居中帶著奢華的味道。滙智在項目中進行機電設計工作。

### A&A Works for Olympian Hotel at One SilverSea, West Kowloon, H.K. 海輝道香港遨凱酒店改造 - 香港·西九龍

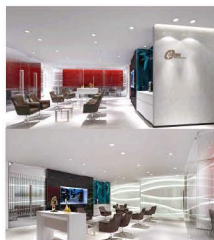


The Olympian Hotel occupies the Podium of One SilverSea at UG/F with total area around **4,500m<sup>2</sup> and underwent renovation**. Talent carries out M&E design for the re-provision of the M&E services to meet the upgrading and facelift of the premise including hotel guest rooms, health club and lounge.

本項目位於一號銀海UG/F，為面積約4,500m<sup>2</sup>之酒店進行改造及翻新。滙智負責機電設計，對系統進行改造，以配合本項目各類用途，包括酒店客房、健身室、大堂吧等。

### Bank of China Branches in Hong Kong 中國銀行分行 - 香港

Following the commissions of M&E designs for 5 Bank of China's branches in 2014, we have been keeping ourselves busy in working on Bank of China branches in different areas in HK. **In the 2015, we completed another 4 branches**. We hope that we can become the long term partner with the client and the interior designer by providing technical expertise and attendance.



繼2014年進行5間位於香港各區的中國銀行分行的機電設計，我們繼續服務中國銀行，為中國銀行其他在香港的分店進行機電顧問工作。2015年已完另外4間分店。我們希望能藉著技術能力及工作上的專注，成為業主及設計師的長期合作伴夥。

### Residential Redevelopment at Begonia Road, Kowloon Tong, H.K. 九龍塘海棠道住宅發展 - 香港·九龍塘

The redevelopment is located in a low density residential area in Kowloon Tong. **10 townhouses were constructed with total floor area of around 3,400m<sup>2</sup> occupying a site of 2,800m<sup>2</sup>**.



住宅座落九龍塘低密度豪宅區，包括10幢相連別墅及地下層停車場，總面積約3,400m<sup>2</sup>，佔地2,800m<sup>2</sup>。



## New Commissions 新任務

### Wuxi Centre 66, Phase 1 Office Tower 2, Wuxi, Jiangsu, China

無錫恒隆廣場綜合發展項目第一期2號辦公樓 - 中國·江蘇·無錫

Wuxi Centre 66, Phase 1 Office Tower 2 comprises of commercial podium and office tower with total floor area of around 69,000m<sup>2</sup>.

Talent carries out M&E design and project administration for the project. Building Information Modeling (BIM), again, will be used for generating M&E combined services drawing (CSD) in 3D model. This helps to provide a better coordination platform with other building professionals in design and construction stages.

無錫恒隆廣場第一期2號辦公樓包括裙房商場及辦公樓，總面積約69,000m<sup>2</sup>。滙智負責本項目的機電系統設計及項目管理工作。本項目將再次使用建築資訊模型(BIM)製作機電管道綜合圖紙，當中三維圖紙將更有效與各建築專業協調設計及改善施工。



### AIS Data Center, Chonburi, Thailand

AIS數據中心 - 泰國·春武里府

Following the engagement for the M&E design verification services for COL Data Centre in HK by Huawei Tech. Investment Co. Ltd, we are commissioned again for the AIS Data Centre project in Thailand. This is the first Data Centre project we work in Thailand. We hope that there would be more chance to participate in Data Centre project in the South East Asia in the near future. The single storey data centre is with floor area around 1,700m<sup>2</sup> and designed to tier III standard. Mission critical facilities are provided including new generators, chiller plants and UPS system. Talent carries out quality assurance service for this project.

繼年前與華為技術投資有限公司合作參與香港COL數據中心項目的機電設計審核工作，我們又獲聘進行泰國AIS數據中心項目的顧問工作。我們亦首次參與泰國地區的數據中心項目，希望日後在東南亞地區有更多合作發展。數據中心以三級的標準設計，面積約為1,700m<sup>2</sup>。中心設有精密空調，精準供電，備用發電機及無間斷電源等系統。滙智負責為項目的機電系統提供品質保證服務。



### Residential Development at Lung Cheung Road, Beacon Hill, Kowloon Tong, H.K.

畢架山住宿發展 - 香港·九龍塘

The development comprises 2 blocks of 7-storey deluxe residential towers, 19 blocks of 2/4-storey private houses together with basement carpark and clubhouse with total floor area of 11,000m<sup>2</sup> approximately. This is another project that Talent commissions for the high-end developer and work with the famous Architect. We hope that we can provide professional services and work seamlessly with the Architect to achieve a highly efficient design.

項目由2幢豪華住宅樓、19幢獨立別墅組成，並設置地庫停車場及會所，總面積約11,000 m<sup>2</sup>。這是我們另一個為高端發展商提供服務，並與聞名的建築師合作的住宅項目。我們希望提供專業服務，與建築師無縫合作，營造高效的設計。

### A&A Works for Market Portion for Tin Yiu I & Tin Yiu II Estate, Tin Shui Wai, H.K.

天耀邨I及II期街市改造 - 香港·天水圍

The Link's shopping centre consists of market portion with total floor area of around 3,000m<sup>2</sup> and is to undergo major renovation and converted to shopping centre. Works comprise the new installation of the main plants including chiller plant and power transforming station. The renovation provided a facelift to the shopping centre.

為領展轄下的商場中的街市部份，改造面積約3,000m<sup>2</sup>，重新翻新為商場。項目包括重新設計各項機電主系統，包括制冷機、變壓及配電站等，改造後令商場耳目一新。



### California Fitness Centres at Whampoa Garden, Hunghom, H.K.

黃埔花園加洲健身中心 - 香港·紅磡

At the completions of 2 California Fitness Centres in Yan Ching Street, Tuen Mun and renovation of Myoga in Grand Tower, Mongkok H.K. in mid of 2015, we started the design work for the centre in Whampoa Garden. The centre occupies G/F of site 4 in Whampoa Garden with total floor area of 2,500m<sup>2</sup>. Talent carries out M&E design and project administration for the project. The project is due to completion by 1st quarter of 2016.

繼2015年中完成位於屯門仁政街的健身中心、及旺角雅蘭中心的Myoga瑜珈中心改造後，滙智再進行位於紅磡黃埔花園的健身中心。中心位於黃埔花園第4期地面層，總面積約2,500m<sup>2</sup>。滙智負責機電設計及項目管理。項目將於2016年第一季竣工投入使用。

### Renovation of Shopping Arcades in Tsimshatsui Centre & Empire Centre, TST, HK

尖沙咀中心及帝國中心商場翻新 - 香港·尖沙咀

We have been taking part in the system condition studies and renovations of these 2 buildings for many years. This is the 3<sup>rd</sup> time we carry out M&E consultancy for the renovation works. The work covers G/F and Upper Ground of the 2 buildings. Working with the long term client is always pleasant and fortifying our confidence.

滙智已多次為這兩幢物業進行機電設施狀況評核及翻新工程，本次為商場首層及地上一層進行的翻新工作，為這兩項物業進行第三次翻新的顧問服務。能為長期客戶提供服務令我們更具信心及倍感欣喜。



### A&A Works for Services Apartment on 5/F to 20/F, Tiffan Court, North Point, H.K.

北角鴻輝閣5樓至20樓服務式住宅改造工程 - 香港·北角

The building consists of 98 apartment units with floor area of 4,400m<sup>2</sup> and is converted from a residential building. Major changes include re-partitioning and complete replacement of M&E services.

項目將所有住宅層改建為98個服務式住宅單元，總面積約4,400m<sup>2</sup>，主要提供機電設計及施工管理服務，配合改造單元間隔及更換所有機電設施。

### A&A Works for Prosperity Centre, Kwai Chung, H.K.

香港大鴻輝(葵涌)中心一期改造工程 - 香港·葵涌

The commercial office blocks are converted from an industrial building with floor area of 21,185m<sup>2</sup>. Electrical and cooling load calculations, plant condition and configuration studies are carried out to cope with operation needs of new usages. Works include replacement of existing chiller plant and MVAC system, addition of generator set, replacement / addition of lifts and escalators and the associated modification works to other M&E services.

為現有工業大廈改造成商業辦公大樓，總面積21,185m<sup>2</sup>，按現有電力裝置及耗電特性、空調負荷及製冷系統需求進行改造，以配合翻新大廈的機電需要。工程包括更換現有空調製冷系統、新增發電機組、更換及新增升降機及扶手梯，並相應的機電改造。



### A&A Works for Yoo Hoo Tower, Kwai Chung, H.K.

香港大鴻輝(葵涌)中心二期改造工程 - 香港·葵涌

The commercial office blocks are converted from an industrial building with floor area of 12,293m<sup>2</sup>. The scope of works comprise of electrical and cooling load calculations, plant condition and configuration studies to cope with operation needs of new usages. Works include replacement of existing chiller plant and MVAC system, relocation & upgrading of the existing transformer, main switch rooms replacement, addition of lifts and associated modification works of other M&E services.

為現有工業大廈改造成商業辦公大樓，總面積12,293m<sup>2</sup>，按現有電力裝置及耗電特性、空調負荷及製冷系統需求進行改造，以配合翻新大廈的機電需要。工程包括更換現有空調製冷系統、將現有變壓器房及配電房改位及增容、更換及新增升降機，並相應的機電改造。

### Proposed Renovation at 5/F Windsor House, 311 Gloucester Rd., Causeway Bay, H.K.

皇室堡商場5/F改造 - 香港·銅鑼灣

The commercial complex is located in the heart of Causeway Bay district. The M&E consultancy is for the remodeling of shopping area on 5/F and the refurbishment of facade. During the renovation period, the commercial complex is still being operated. Meticulous phasing, noise control and prevention of nuisance are vital to shopping centre / office operation.

項目為華人置業轄下的商場及辦公樓改造工程，商場位於銅鑼灣中心地帶，商場五層的樓層面積約2,500m<sup>2</sup>，進行主要翻新及改造，並外立面的翻新。翻新期間商場及辦公樓均需繼續營運，嚴謹的分期及施工安排，對防止噪音及減低滋擾尤其重要。



### Renovation Works from G/F to 3/F, Lok Sing Centre, Yee Wo Street, H.K.

樂聲中心翻新工程 - 香港·銅鑼灣

Large portion of the podium of Lok Sing Centre from G/F to 3/F would be renovated in this project, with the total area of 6,600m<sup>2</sup> approximately. Shopping space comprises of shops, restaurants and entertainment facilities. The new façade design would bring new experience to customers and users. Talent carried out the M&E design and project administration for the project, particularly to upgrade the existing M&E system by replacing the chiller plant and lift system, to achieve high energy efficiency design for the new shopping centre.

項目對裙樓地面層至三層大部份商舖範圍進行翻新改造，由商店、餐飲及娛樂場所組成的購物空間，總面積約為6,600m<sup>2</sup>。配以全新的外立面設計，將為顧客及用戶帶來全新的體驗。滙智負責機電設計及施工管理，更新現有機電系統，提升能源效益，其中包括更換製冷機及升降機系統等。

### A&A Works for G/F to 2/F and 11/F & 12/F, ICBC Tower, 122 Queen's Road Central, H.K.

香港皇后大道中122號中國工商銀行大廈G樓至2樓及11樓至12樓翻新工程 - 香港·中環

The project comprises the upgrading of internal shopping area on G/F to 2/F of a commercial centre and the renewal of building facade with total floor area of 279m<sup>2</sup>. The scope includes the demolition of slabs for 12/F and R/F for transferring GFA to podium. Talent carries out M&E design and project administration for the project.

項目為擴充首層至三層的商用面積並翻新大廈外牆，改造樓層總面積約279m<sup>2</sup>，內容包括拆除12樓及屋面板，將可用面積遷至裙樓。滙智負責相關機電設計及項目管理。





## Eagles Quest II Got 2 Third Places in Taiwan Strait Regatta 2015

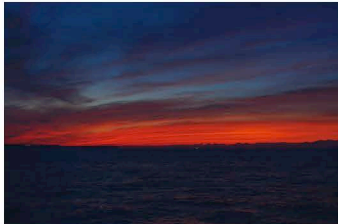
Eagles Quest II 獲得2項海峽杯帆船賽2015第3名



The Company Sailing Craft Eagles Quest II (a 58ft Tanaya 58 Cruiser) entered the **Taiwan Strait Regatta** sailing in Penghu (Taiwan) for Around the Island race and the Penghu to Xiamen (Fujian, China) offshore race. Skipper KD sailed the craft from HK to Taiwan for the race and sailed it back from Xiamen to HK with the crews. The whole trip took 13 days to complete. EQ2 got the 3<sup>rd</sup>

place in the Around the Island race and should have almost got the 1<sup>st</sup> or 2<sup>nd</sup> in the offshore race but was pulled back by breakage of the steel wire holding the dighy. The dighy dropped into the sea at night and this consumed extra 3 hours. EQ2 were overtaken by other boats, lost the placement in this leg and got 3<sup>rd</sup> place overall for the 2 races. Unlike the previous sailing expedition to Sanya, Hainan to view the Volvo Ocean race and met high waves and against strong wind, this time the winds and waves were moderate. Coupled with the acquaintance with the characteristics of EQ2, the voyages were speedy and enjoyable.

The sceneries at sea and in Penghu were spectacular making the trip more fascinating. Crews may go again to Penghu for touring, but this time by plane!



公司帆船EQ2 (58呎Tanaya 58巡航帆船) 參加海峽杯帆船賽 — 賽事由澎湖(台灣)的環島賽及澎湖至廈門(中國福建)的離岸賽組成。船長KD在船員們協助下將EQ2從香港駛到台灣出發, 並從廈門駛回香港。整個航程歷時13天。EQ2 在環島賽中取得第三名, 並在離岸海峽賽中幾乎拿到第一或第二, 但吊著快艇的鋼索折斷, 快艇墮即墮海。這消耗了3小時, EQ2被其他帆船超越, 失去名次, 最終只能獲得整體第三名的成績。有別於1月遠征海南三亞, 以觀看沃爾沃環球帆船賽, 遇到高海浪及強風。這次風浪緩和, 再加上已掌握EQ2的特點, 航程迅速和愉快。

團隊被海上和澎湖的壯麗風光吸引, 很可能在短期內再次到澎湖旅遊觀光, 但這次將會乘坐飛機!

## 滙智機電顧問有限公司 Talent Mechanical & Electrical Engineers Ltd.

Head Office: Unit 203, 2/F, Dominion Centre, 43-59 Queen's Road East, Wanchai, Hong Kong  
中國上海市番禺區 667 號南洋實業大樓 5 樓 B 室  
t: +852 2838 9133 f: +852 2836 0750  
e-mail: info@talentme.com web-site: www.talentme.com

Beijing Office: Room 909, Building No.2 Guangqujiayuan (Midtown) Guangqumenwai, Dongcheng District, Beijing  
北京支部分部: 北京市東城區國子監大街 2 號樓 909 室 Post Code: 100022  
t: +86 10 6528 9740 f: +86 10 6514 1698  
e-mail: bj@talentme.com

Shanghai Office: Unit B, 5/F, Nanyang Enterprise Building, 667 Pan Yu Road, Shanghai, China.  
上海支部分部: 中國上海市番禺區 667 號南洋實業大樓 5 樓 B 室 Post Code: 200030  
t: +86 21 5108 5770 f: +86 21 5258 3100  
e-mail: sh@talentme.com

Shenzhen Office: Room 18, Floor 15A, Pacific Building Jiabin Road, Luohu District, Shenzhen, China.  
深圳支部分部: 中國深圳市羅湖區嘉賓路太平洋貿易大廈 15A 18 室 Post Code: 518001  
t: 86 755 2219 5358 f: 86 755 2219 5356  
e-mail: sz@talentme.com

Chengdu Office: Room 805, 2/F Sunshine New Center, 87 East Five Sections of Yihuan Road, Jinjiang District, Chengdu  
成都支部分部: 四川省成都市錦江區一環路東五段 87 號陽光新業中心 2 號樓 805 室 郵編: 610000  
t: 86 28 6898 5566 f: 86 28 6202 3595  
e-mail: chengdu@talentme.com

## ACTIVITIES HIGHLIGHT 精彩活動

### Team Building Tour – Vacation Subsidy

團隊建立 - 每年旅遊贊助

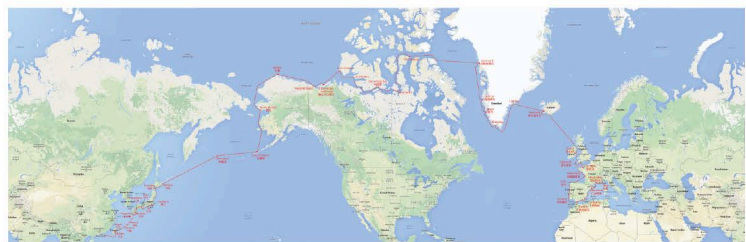


Last year, team building activities were scattered with diverse destinations so that colleagues could arrange themselves according to their own interests. Destinations like Japan, Korea, Europe (France, UK, Spain & Portugal), Canada and Palau were selected. These are popular touring areas for the people from Hong Kong. Ski is still a popular sport in our office. The Korea tours' highlight was skiing. In the light that our colleagues are interested in improving the skiing and snowboarding skills, we may arrange a training camp so that we can have a leap in the coming winter.

去年, 公司旅遊的選擇分散在各個地點, 按各同事不同需要作出選擇 - 日本、韓國、歐洲 (法國、英國、西班牙及葡萄牙)、加拿大及帛琉群島等為港人熟悉的旅遊點。滑雪仍是同事間熱愛的冬季運動, 韓國之旅的亮點便是滑雪。由於眾多同事都喜愛滑雪, 我們準備舉辦滑雪及單板訓練營, 使眾多愛好者能在今年冬季在技巧上作出突破。



### Sailing Expedition – Northwest Passage Crossing Arctic Ocean (Postponed to 2016)



The Northwest Passage is a sea route that connects the Pacific Ocean and Atlantic Ocean through the Canadian Arctic Archipelago. That is, when travelling from Asia to Europe, a route passing through Bering Strait and the Arctic Ocean reaching Scandinavia is used. In the past, the Northwest Passage has been virtually impassable because it was covered by thick, year-round sea ice. In the recent years, climate change has enabled commercial traffic to pass through the Arctic Ocean via this once impossible route. Ship routes from Europe to eastern Asia or vice versa would be 4,000 km shorter.

Our original plan of crossing the passage in 2015 is postponed to 2016 so that the team can have more time to prepare. The voyage will start from Hong Kong in April 2016. The expected arrival date to Iceland is around October. Of course they will not abandon the craft in Iceland. The craft will continue its journey through North Sea to England, Mediterranean, Suez Canal, the Red Sea, India, Southeast Asia and back to HK. Will the team climb some iceberg in the Arctic Ocean? They had made some preparation.



西北航道所指的是連接太平洋與大西洋, 通過加拿大北極地區島嶼的北極航線。即從亞洲通往歐洲, 航經白嶺海峽及北冰洋抵達北歐。過往因全年被厚冰包圍而幾近不可能從水路越過, 近年因氣候變化而能讓商船在溶冰期通航。船舶從歐洲往東亞或相反方向可節省約4,000公里航程。



我們原計劃於2015年出發, 但為作更充分的準備而將計劃順延一年。航程將於2016年4月從香港出發, 預計於2016年10月抵達冰島, 而我們並不會在冰島棄船, 船隻會繼續航行, 經北海到英國、進入地中海、經蘇伊士運河到紅海、印度、東南亞再返回香港。隊員會否在北極攀登冰山? 有可能, 他們已在做準備。