



Company News

公司動態

Quality Building Award 2014 香港2014優質建築大獎

Talent is proud to have 2 projects getting the "Quality Building Award 2014". After years of unrelenting hard work on promoting environmental friendly, sustainable and energy conservation strategies, Talent's projects again obtained compliments from professional body. The projects are:-

Renovation of China Resources Building - Grand Award (Renovation/Revitalization)
One Mayfair, 1 Broadcast Drive - Finalist (HK Residential <Multiple Buildings>)



We believe that this is still the beginning of our mission for quality works. We still have a lot to explore and learn. With these awards as encouragements to our targets, we will continue to put efforts and resources in offering environmentally friendly schemes, promoting engineering expertise, green strategies and sustainable M&E systems to our clients. Our customers are well informed of the costs and benefits of such strategies so that appropriate decisions can be made. There are also clients who share the same vision with us and are willing to sacrifice a bit for creating sustainable works.



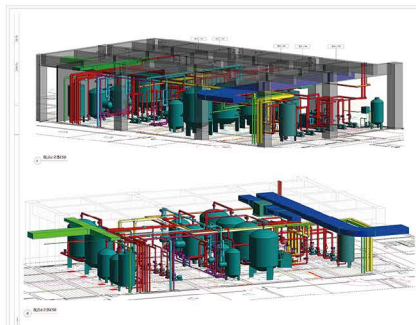
滙智的兩個項目獲取「香港優質建築大獎2014」的獎項。繼多年來努力不懈地推廣環境保護、可持續發展及能源節約的策略，我們再次獲得回報。獲獎項目為：-

華潤大廈改造工程 - 大獎(改造/活化建築類別)
逸瓏 廣播道一號 - 入選(多棟住宅建築類別)

我們相信這仍是大使命的開始，我們需繼續努力學習及探求。得到這些獎項的鼓勵，我們會繼續投入資源及力量，向客戶推薦綠色策略、先進技術及可持續的機電系統。客戶對這些策略有充份了解，清楚其優點及代價，從而作出適當的決策。我們的客戶中不乏同路人，他們也具願意付出的心，為地球可以持續而付出代價。

Building Information Modeling (BIM) Ready 建築信息模型 (BIM) 已準備就緒

Pursuing to the successful trial of using AutoCAD Revit for generating M&E building information and 3D by our BJ team in 2013 for a 5-star hotel project, we continue to arrange more staff both in China offices and HK for BIM training and integrate our works with Architects and other building professionals. We started using software using AutoCAD platform for generating 3D for more than 10 years. It is time to engage in a common platform with which we can share information with other building professionals.



北京團隊在2013年的5星級酒店項目已成功使用AutoCAD Revit制作機電的建築信息和三維圖紙，效果令人鼓舞。我們將繼續安排在中國各辦事處和香港的同事參與BIM培訓，並結合其他建築專業的建築信息，整合為更具功能的建築模型。我們使用以AutoCAD為平台的軟件，制作三維圖紙已超過10年。現在是時候利用共同的平台，使我們可共享其他建築專業的設計信息。

Relocation of our Beijing Office 北京公司擴展搬遷

In the past few years, the volume of works for our Beijing office has been increasing constantly. To cope with the demand, we have relocated and piled up resources to support our service in Beijing and its vicinities. New office address is shown at the back of this Newsletter and our homepage. Spare space has been allowed in this relocation but may be consumed very soon. We continue to pursue maintaining better workspaces, facilities and tools to colleagues in our new office so as to provide a platform to our colleagues to excel. Headed by our colleague Benson Ho, our Beijing office should be able to break records constantly.



在過往數年，北京分公司的工作量不斷增加。為迎合需要，我們已遷往較大、且具擴展空間的辦公室。新地址顯示於本簡訊後頁及我們的網頁內。本次搬遷已預留擴展空間，但可能很快會用盡。我們仍以維持較佳工作環境、設施、工具及工作平台給同事，令我們的工作果效更顯超卓。我們同事何冠熾先生將再次帶領團隊勇創佳績。

Promotion to Associate – Mr Jerry Tse 晉升聯席董事 — 謝志偉先生

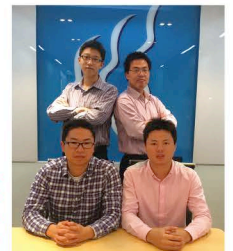


Jerry graduated from the University of Hong Kong with honor degree in Electrical Energy Systems Engineering in 2002. He holds a Master Degree in Building Services Engineering. He joined Talent as graduate trainee since his graduation in 2002. Through years of relentless hard work and focusing on projects' and clients' needs, he won countless compliments and appreciations from project teams. He developed an analytical mind and handled projects cautiously at a very early stage of his career. This has eased our burden on the high demand for quality project team leader. His experiences cover office tower, hotel, research centre, data centre, large scale commercial and residential projects. He specializes on formulation of M&E schemes and developing methodology for analytical studies. His promotion strengthens our project handling capability and the training of other engineering colleagues.

謝志偉先生於2002年畢業於香港大學，獲電能系統工程榮譽學士學位，隨後獲取屋宇裝備工程學碩士學位。謝先生從2002年畢業起便加入滙智作為受訓畢業生。其過人的分析能力及謹慎的處事作風，經年累月的辛勤工作及專注於項目及業主要求，已贏取業主及項目團隊的信賴及好評，這減輕了我們缺乏資深項目主管的重擔。謝先生的經驗涵蓋辦公樓、酒店、科研、數據中心、大型商業及住宅發展等，專長於機電方案研究、定案及制訂系統分析方法。他的晉升加強了我們對項目的處理能力及人員培訓力量。

Training Trip of Our China Colleagues 內地員工來港培訓

Our China offices were too busy to send colleagues to Hong Kong for 3 months training trip in 2013. In 2014, we arranged training trips for 6 colleagues from Shanghai and Shenzhen offices. The prerequisite for the training is the completion of the in-house training manual before leaving home to Hong Kong so that trainees can get the most out of it. Apart from technical knowledge and analytical tools, the use of AutoCAD Revit for BIM is also a main subject. Usage of other softwares for building services design, Energy Analysis and Green Features awareness are also parts of the intensive training targets. We have structured the timing for our in-house training to HK staff so that the engineers from China can also be benefited from these training sessions.



我們國內分公司在2013年工作繁重，未能派員到港接受3個月的培訓。2014年，我們安排上海及深圳共6名同事來港接受培訓。為使在港培訓更有果效，學員來港前需熟習公司的設計手冊。除技術知識及系統分析工具外，今年會著重使用AutoCAD Revit進行BIM，並機電設計軟件的應用，能源分析及綠色建築措施認知等亦是培訓目標之一。我們的常規內部培訓的時間表會略為調整，讓到港接受培訓的同事亦能獲益。

PROJECT 項目

Projects Completed Recently (近期竣工項目)

Project of PCCW Solutions, Powerb@se Data Centre Cargo Consolidation Complex, Kwai Chung, H.K.

電訊盈科企業方案Powerb@se數據中心 - 香港 · 葵涌

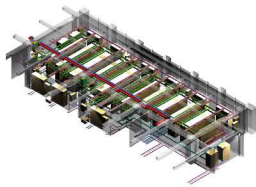
The data centre consists of 9-storey equipment area with 18,800m² total data centre area and is designed to Tier III + architecture. Mission critical facilities are provided including new high voltage system, transformers, generators, chiller plants and UPS system. Talent carried out design, project management and infrastructure upgrade for the data centre. There were 3 phases of the project and all have been completed. The project has been awarded the LEED Platinum certification.



數據中心以國際Tier III + 等級設計及建造，佔9個樓層，面積為18,800m²。中心設有精密空調、精確高壓及低壓供電、備用發電機及無間斷電源系統。滙智進行數據中心的機電設計、施工管理及基礎設施的提升。項目分三期進行，現已全部竣工。項目取得美國 LEED 綠色建築白金認證。

Citic Telecom International Data Centre, H.K.

香港中信國際電訊數據中心 - 香港



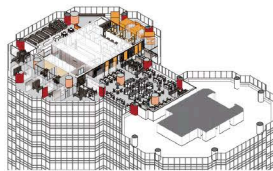
This is the 2nd project we worked for the client. The Citic Telecom International Data Centre in Hong Kong Island with Tier 3 provisions occupies an area of 2,300m², and is equipped with completely independent mission critical facilities, mechanical and electrical plants. Engaging in the data centre project with same design team & project management team will definitely improve the work accuracy and efficiency.

這是我們獲聘為同一業主進行的第二個香港中信國際電訊數據中心。三級標準的數據中心共佔面積2,300m²，滙智進行數據中心的機電設計，與同一設計團隊及項目管理隊伍再次合作，工作準確度及效率必然得到提高。

Renovation of McKinsey & Company Office at Kerry Center, Beijing, China

麥肯錫辦公室翻新 - 中國 · 北京嘉里中心

The office occupies 19/F & 20/F of the Beijing Kerry Center with floor area of 1,800 m². Distinctive facilities installed include air purification system and intelligent control system. Talent carried out E&M design for the office and infrastructure upgrading.



辦公室佔用北京嘉里中心19樓及20樓，總面積約1,800m²。辦公室設有空氣淨化系統及智能控制系統。滙智負責辦公室的機電設計及基礎設施提升。

Renovation of Shopping Arcade in Park Hotel, TST, H.K.

百樂酒店商場改造及翻新 - 香港 · 尖沙咀

The entire podium of Park Hotel from G/F to 3/F with total area around 6,000m² underwent re-planning and provided up market shopping space. Talent had to design and provide an independent M&E systems separated from the main systems of the hotel. Calculations and analyses of M&E loads were carried out before the M&E design. Renovation works were carried out by phases to maintain the normal operation of the hotel. The whole project was completed and put into use in early 2014.



項目對酒店G/F至3/F總面積約6,000m²之商場部份，進行改造、重新規劃及翻新，趕上時代步伐。滙智負責設計及配置獨立系統，分割自酒店主系統，並在設計前對整個發展進行負荷計算及分析。為配合酒店的正常運作，工程分多期進行，並於2014年初完工投入使用。

Renovation of Caritas Social Centre, Yaumatei, H.K.

明愛油麻地服務中心 - 香港 · 油麻地

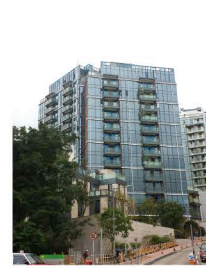


The composite building was built in the 1970's accommodating the 82-guestroom lodge, community education, rehabilitation workshops and hostel. The rehabilitation workshops and hostel underwent 2nd phase renovation with introduction of improved disabled facilities in order to meet the operation requirements.

賓館在70年代興建，設82間房間、社區教育中心、復康工場及院舍。復康工場及院舍進行第二期翻新工程，並引入改進的殘疾人士設施，以滿足營運需要。

Residential Development at 1 & 3 Ede Road, Kowloon Tong, H.K.

義德道1及3號住宅發展 - 香港 · 九龍塘



The development comprises two 13-storeyed deluxe residential towers, and a 3-storey house, clubhouse, 2-storey basement car park with total floor area of 7,200m². This is the second project Talent commissions for the prestigious developer. We hope that we can maintain this trend by providing professional and attentive service.

項目由2幢豪華住宅樓、1幢獨立別墅組成，並設置會所及二層地庫停車場，總面積約為7,200m²。這是我們為這高端發展商提供服務的第三個項目，並希望以專業及專注的服務，維持這良好勢頭。

A&A Works to Block A, TWGHs Jockey Club Rehabilitation Centre, Aberdeen, H.K.

東華三院賽馬會康復中心A座改建 - 香港 · 香港仔

2 storeys of total area 2,500m² are added to the existing Block A. The premises provide training facilities for mentally disabled groups. The usages include health care facilities with dormitories, training rooms, multi-purpose rooms and office. The project was designed to obtain silver grade under BEAM Plus certification. Certification work is in progress.



現有A座將增建2層，面積約2,500m²，為弱能人士提供培訓設施。設施主要有康復護理，並設宿舍、培訓室、多用途室及辦公室。項目以環境標準BEAM Plus興建，目標為獲取銀獎，認證仍在進行中。

Residential Development at 8 LaSalle, H.K.

喇沙利道8號住宅發展 - 傲名 - 香港



The premise is a single tower boutique residential with floor area of 5,800m². BEAM plus is pursued. Apart from usual, Talent carried out consultancy with studies and analysis for renewable energy, green features, and intelligent systems applicable to the project. This is the first project that Talent commissions for the esteemed developer. We have met our target of maintaining a long term working relationship with the developer by providing quality service.

項目為一幢高級精品住宅發展，面積約5,800m²，並以環境標準BEAM Plus興建。除一般機電設計外，滙智進行多項再生能源、環境保護及智能設施的研究及應用。

這是我們為這高端發展商提供服務的首個項目，我們希望能藉優質服務達到目標，成為發展商長期合作夥伴。

California Fitness Centre at Kin Lee Commercial Centre, Wanchai, H.K.

加州健身中心 - 健利中心 - 香港 · 灣仔

The fitness centre occupies 3/F & 4/F of the Kin Lee Commercial Centre in Wanchai with floor area of 1,750m². This is the 12th fitness centre Talent commissioned for the same client. With this 12th center we commissioned for the client, we are delighted that we can maintain a performance acceptable to the client for such a long period. We were told that some more centres are about to commence.



該健身中心佔用健利中心商場3層及4層，總面積約1,750m²。這是滙智為同一業主進行的第12個健身中心。充分了解業主的的要求令我們能更快捷完成設計。這第12所中心亦見證我們在這長時間維持業主接受的技術及服務水準。我們又獲業主通知，準備新健身中心的機電顧問工作。

Bank of China Branches in Hong Kong

中國銀行分店 - 香港



Following the commissions of M&E design for 5 Bank of China's branches in 2014, we have been keeping ourselves busy in working on Bank of China branches in different areas in HK. In the 2nd half of 2014, we completed 4 branches and another branch is in progress. We hope that we can become the long term partner with the client and the interior designer by providing technical expertise and attendance.

繼2014年進行5間位於香港各區的中國銀行分店的機電設計，我們繼續服務中國銀行，為中國銀行其他在香港的分店進行機電顧問工作。2014年下半年已完成4間分店，另外1間分店亦在施工階段中。我們希望能藉著技術能力及工作上的專注，成為業主及設計師的長期合作夥伴。

New Commissions 新任務

Wuxi Centre 66, Phase 2, Wuxi, Jiangsu, China 無錫恒隆廣場綜合發展項目第二期 - 中國 · 江蘇 · 無錫

Wuxi Centre 66, Phase 2 comprises of service apartment, clubhouse, landscape and carpark with total floor area of around 100,000m². Talent carries out M&E design and project administration. Building Information Modeling (BIM) will be used for generating M&E combined services drawing (CSD) in 3D model. This helps to provide a better coordination platform with other building professionals in design and construction stages.

無錫恒隆廣場第二期包括酒店式公寓、會所、園林設施及地下停車庫，總面積為100,000m²。匯智負責本項目的機電系統設計及項目管理工作。本項目會使用建築資訊模型(BIM)製作機電管道綜合圖紙，當中三維圖紙將更有效與各建築專業協調設計及改善施工。



Replacement of AFA System and Fire Services Installation Improvement Works at Link's Premises, H.K. 領匯物業更換火災自動報警系統及消防系統改善工程 - 香港

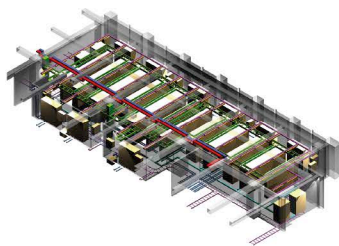


Four Link's premises including Tin Chak Shopping Centre, Fu Cheong Shopping Center, Po Tat Shopping Centre and Wah Lai Estate Car Park are existing premises established since 2001 / 2002. Talent is responsible for the design and project administration for the AFA system replacement and Fire Services installation improvement works. Reviewing of existing fire services installation against operational requirement, proposing appropriate design & solution, and method statement for system changeover are the prime factors for reaching effective goals.

項目為領匯轄下四幢於2001-2002年建成的天澤商場、富昌商場、寶達商場及華荔邨停車場。因應更新現有火災自動報警系統及提升其他消防系統的需要，匯智負責消防系統改善工程的系統設計及項目管理。其中分析現有消防系統設計及運作的要求，從而提出合適改善方案及系統轉換方法，是達至優良成果的關鍵因素。

COL Data Center, CableTV Tower, Tsuen Wan, H.K. COL數據中心 - 香港 · 荃灣

The single storey data centre is with floor area around 2,000m² and designed to tier III standard. Mission critical facilities are provided including new generators, chiller plants and UPS system. Talent carries out design verification services for "design and build" contractor, Huawei Tech. Investment Co., Ltd.



數據中心以三級的標準設計，面積約為2,000m²。中心設有精密空調，精準供電，備用發電機及無間斷電源等系統。匯智受僱於項目的設計及建造合約商華為技術投資有限公司，為項目提供設計審核服務。

Major Renovation for Hau Tak Shopping Centre, Tseng Kwan O, H.K. 厚德商場翻新 - 香港 · 將軍澳



The premise consists of East Wing and West Wing, each of 3 storeys with total area of around 6,000m² and is to undergo renovation. Works include upgrading of M&E installations, improvement of existing lifts for disabled. This major renovation will provide a facelift to the commercial complex.

厚德商場共有東西兩翼，每翼各有3層，總面積約6,000m²，將進行翻新規劃。項目包括各項機電系統及傷殘電梯的提升等。經改造後，商場將耳目一新。

Residential Development at Kai Tak Development, Kai Tak, HK

啟德發展區住宿項目 - 香港 · 啟德

Talent is invited by Architect with prior collaboration to team up for this signature project. The project comprises multiple residential towers, basement car park and fitted with luxurious club house. Total floor area is about 48,000m². We hope to work seamlessly with the Architect to achieve highly efficient and effective results. The project will be designed and constructed under the BEAM Plus environmental standard.

匯智再次受曾在其他項目共事的建築師邀請，加入設計團隊參與此重點項目。項目由多幢高層住宅樓組成，並設會所及地庫停車場。總面積約為48,000m²。我們希望能與同一建築師無縫合作，營造高效及準確的設計。項目將以環境標準 BEAM Plus設計及興建。

Residential Development, Sau Kei Wan, H.K.

筲箕灣住宅發展 - 香港 · 西九龍

The premises is a single tower boutique residential building with total floor area of 4,200m². The development consists of duplex units, clubhouse, residential facilities and landscape garden. Talent carries out M&E design and project administration for the project.

項目為一幢高級精品住宅發展，面積約4,200m²。本發展包括部份複式單位、會所、住宅設施及園林設施。匯智負責機電系統設計及項目管理工作。

A&A Works for Hotel and Shopping Arcade, Hoi Fai Road, West Kowloon, H.K.

海輝道酒店及商場改造 - 香港 · 西九龍



The Podium of One SilverSea from G/F to UG/F with total area around 10,000m² and will be renovated to a hotel and shopping arcade. Talent carries out M&E design for the re-provision of the M&E services to meet the different usages in the premise such as hotel guest room, health club, café, retail, F&B and supermarket.

本項目為一號銀海 G/F 至 UG/F 總面積約 10,000m² 之商業部份進行改造及重新規劃，將改造成一所酒店及商場。匯智負責機電設計，對系統進行改造，以配合本項目將來各類不同用途，包括酒店客房、健身室、酒吧、零售商舖、餐飲及超級市場等。

Renovation of Wai Wah Commercial Centre at 6 Wilmer Street, Sheung Wan, H.K.

威利麻街6號威華商業中心 - 香港 · 上環

Wai Wah Commercial Centre is an existing 27-storey commercial building and is to undergo renovation and conversion. The building will be renovated to a commercial building with a new modern outlook and facilities upgrade. It comprises 24 storeys of offices, 4 storeys of retails and F&Bs. This is the first project Talent works with the client and the Architect.

威華商業中心本為27層商業大廈，將全面翻新及改造，成為24層辦公層及4層商店。這是匯智為業主及建築師進行的首樁項目。改造包含各機電系統、配電系統的提升、更新原有機電設備等。項目改造後將令威華商業中心擁有現代化的外觀及設施。

Alternation, Additions, Repairs and Improvement Works for Hong Kong Baptist University, Kowloon Tong, H.K.

香港浸會大學翻新改造工程 - 香港 · 九龍塘

The project involves conversion, alteration, consequential and spatial re-planning for several existing premises inside campus, including Yeung Shui Sang Building, Sir Run Run Shaw Building, teaching laboratories in Ho Sin Hang Campus and laboratories for Science Faculty. Works are separated into different phases to suit the class schedules. Talent carries out M&E design, coordination for operational needs and project administration for the works.



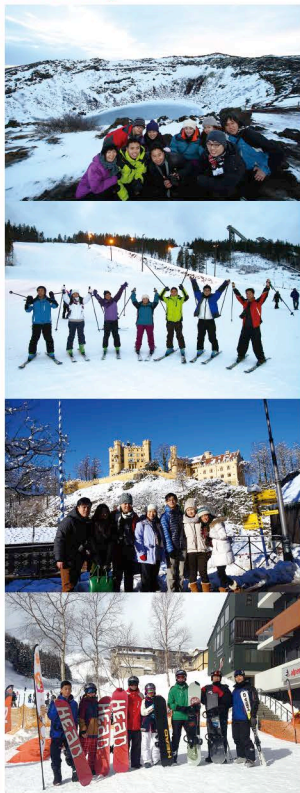
項目為香港浸會大學內多幢大樓包括楊瑞生紀念館、邵逸夫大樓、何善衡校園之教學實驗室及科學院之實驗室進行翻新、改造及重新規劃。為配合校園的上課時間表，翻新改善工程分多個階段進行設計及施工。匯智為本項目進行機電系統設計、協調、配合校園運作要求及項目管理工作。

Team Building Tour - Vacation Subsidy

團隊建立 — 每年旅遊贊助

Last year, team building activities were segregated into 4 groups with diverse destinations so that colleagues could select according to their own interests. **Winter Iceland and Finland, Hokkaido, Germany and Australia were selected.** These are common touring areas for the people from Hong Kong. However, the group of colleagues choosing Iceland and Finland to feel the **winter breeze surrounded by Aurora while skiing was new to most of us.** This tour should not be complete without outdoor sauna and hot spring and they did it. Ski is popular in our office. Both Finland and Hokkaido tours' highlight were skiing. Even the seemingly relaxing tour to Australia is also a self-guided tour. Colleagues selected bus tours rather than driving by their own. To this year, no one selected package tour for these team building tours. That is, **they rely more on team work to make the tours enjoyable and successful.**

去年，公司團隊建立的選擇集中於4個地點，按各同事不同需要作出選擇。一、**冰島及芬蘭、北海道、德國及澳洲**等為港人熱識的旅遊點。可是，前往冰島的同事選擇在冬季出發，在**北極光下於雪上滑行，感受一下北方涼風，頗有一番滋味**，這旅程若缺少露天溫泉便太遺憾，最後他們仍可以玩得透徹。滑雪活動在同事中甚為流行，芬蘭及北海道旅遊的其中一個焦點就是滑雪。即使看似舒適的澳洲行，同事也選擇擠巴士而不自駕。到今年，已沒有同事選擇參加旅行團，這說明更依賴團隊合作，才可達到愉快及成功的旅程。



Sailing Expedition - Northwest Passage



The Northwest Passage is a sea route that connects the **Pacific Ocean and Atlantic Ocean through the Canadian Arctic Archipelago.** That is, when travelling from Asia to Europe, a route passing through Bering Strait and the Arctic Ocean reaching Scandinavia is used. In the past, the Northwest Passage has been **virtually impassable because it was covered by thick, year-round sea ice.** In the recent years, climate change has enabled commercial traffic to pass through the Arctic Ocean via this once impossible route. Ship routes from Europe to eastern Asia or vice versa would be 4,000 km shorter.

Our director KD, a class 1 PV skipper who has been practicing sailing for 6 years, will **use the company's sailing craft to try this expedition** and witness the climate change. His sailing partner (or more accurately sailing instructor) **Shaun Weng, an American Chinese who did the circumnavigation single-handed 15 years ago and became the first Chinese who had achieved this, will lead the team.** Will they succeed doing this? No one knows! In 2013, only half of crafts could pass the passage with one sank at the spot.

The voyage will start from Hong Kong in April 2015. The expected arrival date to Iceland is around October. Of course they will not abandon the craft in Iceland. The craft will continue its journey through North Sea to England, Mediterranean, Suez Canal, the Red Sea, India, Southeast Asia and back to HK. There would be many legs that friends are welcome to join. We are short of crews especially for some legs. You know why? You should know itat least the Somali leg!

西北航道所指的是**連接太平洋與大西洋，通過加拿大北極地區島嶼的北極航線。**即從亞洲通往歐洲，航經白嶺海峽及北冰洋抵達北歐。過往因**全年被厚冰包圍而幾近不可能從水路越過**，近年因氣候變化而能讓商船在溶冰期通航。船舶從歐洲往東亞或相反方向可節省約4000公里航程。

我們的董事朱棋端先生，持一級遊樂船長資格，並參與帆船運動6年，將**利用公司的帆船進行這項穿越旅程**，見證氣候變化。他的搭檔是**15年前首名華人以單人帆船方式，進行環球航行的翁以煊先生**，與其說是搭檔，不如說是導師及帶領者。他們會否成功，暫時難以判斷。

航程將於2015年4月從香港出發，預計於2015年10月抵達冰島，航行將分為多段航程，歡迎有興趣的朋友加入，參與部份旅程。我們並不會在冰島棄船，船隻會繼續航行，經北海到英國、進入地中海、經蘇伊士運河到紅海、印度、東南亞再返回香港。部份航段極為缺人，何解？你懂的…… 索馬里水域！



滙智機電顧問有限公司
Talent Mechanical & Electrical Engineers Ltd.

Head Office: Unit 203, 2/F, Dominion Centre, 43-59 Queen's Road East, Wanchai, Hong Kong
t: +852 2838 9133 f: +852 2836 0750
e-mail: info@talentme.com web-site: www.talentme.com

Beijing Office: Room 909, Building No.2 Guangqujiayuan (Midtown) Guangqumenwai, Dongcheng District, Beijing
北京市東城區廣渠門外廣聚源(名敦道) 2 號樓 909 室 Post Code: 100022
t: +86 10 6528 9740 f: +86 10 6514 1698
e-mail: bj@talentme.com

Shanghai Office: Unit B, 5/F, Nanyang Enterprise Building, 667 Pan Yu Road, Shanghai, China.
中國上海市番禺路 667 號南洋實業大樓 5 樓 B 室 Post Code: 200030
t: +86 21 5108 5770 f: +86 21 5258 3100
e-mail: sh@talentme.com

ACTIVITIES HIGHLIGHT 精彩活動

4 Maiden 2nd Peak Expedition 2014 Completed 四姑娘山二峰登山計劃2014完滿結束



The expedition to 2nd Peak of the 4 Maiden, Sichuan, China in September 2014 was completed. The team started acclimatization in Aba County, Sichuan where the sceneries were spectacular. **There were 15 participants with 13 male and 2 female.** Acclimatization at plateau of 2,400m to 3,800m for 3 days was arranged. The team started heading to Reilong Village on 23 September with tour along the route including Double Bridge Ravine (Xuanqogou) until they reached Reilong Village at night.



To reach the summit of this mountain, it took 2 days starting from 3,200m Reilong Village. **One whole day was spent in reaching the base camp (BC) with a mountain hut at 4,200m.** That location was lower than the original camp site we had been 7 years ago.

As the BC was lowered, the ascent covered on the 2nd day would be more difficult. We were not sure if we could complete the journey. The 1st day covered the terrain with grass-fields and bushes up to BC. Some members were exhausted after reaching the BC as the last 300m ascent covered a long distance. Staying a night in the timber hut should be comfortable but with snoring sound from 2 members like thunder, most of them could barely sleep that night.

The route from BC to the summit is on a gigantic crag. This crag continues up to the snow line at 4,600m in our previous climb. As there were little snow this year, crampons were not required for this trek. Some of the team members were disappointed as they would like to take this opportunity to practice snow ascent with crampons. **As informed by the mountain guides, the snow melted completely during the summer in these 3 years and was probably due to global warming.**



When reaching the mountain pass 170m below the peak, we took a photo at the point we gave up the climb 7 years ago. **Surprisingly, the height shown at the GPS watch was different from that measured 7 years ago. It dropped over 100m probably due to the earthquake 4 years ago.** For the last 170m, we followed the newly erected steel wire fence leading up to the peak at the supposedly 5,274m. **All 15 climbers had achieved it including the one who suffered from diarrhea and vomiting.** It was extremely challenging for him as he had to find hiding places every hour but still could make it. **This marked an unprecedented 100% summit rate for our high mountain expedition.** Hope that this will not give a false impression that the mountains we selected are too easy to climb. As a proof, another HK team ascending one day arrear to us had a 50% summit rate. Next year? Yes, come and join us!



2014年9月份攀登中國四川四姑娘山二峰已完滿結束。隊伍在風景極美的四川阿壩州進行高度適應。**登山隊共有15名成員 — 13名男隊員及2名女隊員。**安排了隊員在高度為2,400m - 3,800m 高原進行3天高度適應。登山隊在9月23日向日隆鎮進發，並沿途遊覽路上的景點，包括四姑娘山的雙橋溝，於晚上抵達日隆鎮。

為登上這座山，我們從3,200m高的日隆鎮開拔，共用了兩天時間。**由日隆鎮徒步至4,200m的大本營(BC)木屋需要整整一天，這處比我們7年前的營地低200米。**因大本營低了，第二天行程將更困難，隊員們不知能否登頂。第一天到大本營經過草坪及灌木叢。部份隊員抵達大本營後已筋疲力盡，特別是最後的300m需經遙遠路途。在木屋住一晚本屬舒適，但由於兩名隊員鼾聲過響，大部隊員都難以入睡。

往山頂的路途為一塊巨石，原直引至4,600m的雪坡，因今年山上只餘少許殘雪，部份隊員原計劃可進行雪地攀登的練習，但現時連冰爪也不用場。**按嚮導所指，近三年夏季山上積雪都溶化淨盡，這可能因全球暖化所致。**

當到達離山頂170米下的山坳，在登山隊於7年前折返處拍照留念，**令人吃驚的，是GPS所示的高度竟然比7年前低100m以上，這可能是由4年前的大地震所致。**最後的170米沿新建的鋼鐵護索上登，到達原為5,274m的山頂。**所有15名隊員全部登頂，這令我們創造出前所未有的100%登頂率。**包括一路上都在嘔吐及腹瀉，每小時都需找隱蔽處的一名隊員都能登頂。對這名隊員來說，這次是極大的挑戰。希望這不會給人錯誤訊息，我們所選高山均沒有難度，由登山隊後一天出發的另一隊香港隊以50%登頂率完成征途，得知全部登頂並非易事。明年？會的，請加入我們的登山隊出征！

Shenzhen Office: Room 18, Floor 15A, Pacific Building Jiabin Road, Luohu District, Shenzhen, China.
深圳支部: 中國深圳市羅湖區嘉賓路太平洋貿易大廈15A 18室 Post Code: 518001
t: 86 755 2219 5358 f: 86 755 2219 5356
e-mail: sz@talentme.com

Chengdu Office: 2101 Guo Jia New Horizons Square, 668 Jin Dong Road, Chengdu, Sichuan, China.
中國四川省成都市錦江區錦東路668號國嘉新視界廣場2101室 Post Code: 610000
t: 86 28 6898 5566 f: 86 28 6202 3595
e-mail: chengdu@talentme.com