



Company News

公司動態

Cultivating Green Lifestyle 培養綠色生活習慣

We are advancing to implement green features and reduce carbon foot print in our projects. After getting awards for our 3 projects last year, we strive to **promote green livings to our colleagues and friends this year**. That is, to bring green to home. Campaigns and seminars will be conducted in office throughout



this year so as to arouse attentions and participations. Although the effects are minor to the society, green and environmental conservation are built up bit by bit. This **requires knowledge and sacrifice**. To effectively reduce green house gas emissions, we have to grasp the information such as the emission rates including embedded carbon of equipment of different energy sources, different diets and also activities. We did not handle seriously the pollutions we generated in our society. **The costs of buying products and services do not account for the costs of treating the messes of our consumptions. This skews the demands for products and services to high side.**

The effective way is to **reduce consumptions**, and next, **reuse and recycle products**. Taking our MD as an example, the air conditioner in his office room is operated less than 10 hours a year as he uses 2nd hand cool air from open office. He always carries water bottle to reduce consuming bottled water, chooses activities like jogging, hiking, sailing in lieu of leisure drive, powerboat, treadmill run.

We have installed energy efficient lighting in office and will promote using the same for our homes. Breakeven periods of energy efficient lightings like LED, T5 will be provided to our colleagues so that they know which ones should be replaced that get the most out of it. Of course, avant-garde should be willing to sacrifice more to reduce energy consumption.

我們為項目中值入綠色元素，減少碳排放而勇往直前，經過2012年的三個項目獲取香港建築議會所頒發的“2012年環保建築獎項”，今年的重點在於推動綠色生活，將其帶到家中。公司內部在舉辦講座及運動，引起同事的關注及參與。此舉對社會雖沒有重大影響，但環境保護向來就是點滴累積，這都**需要知識及犧牲**。能更有效降低溫室氣體的排放，必須掌握資料如各能源使用的碳排放量、設備值入的碳量(生產時需投入的碳量)、食物的生產過程及各種活動的能耗。我們從前沒有用心保護環境，已帶來惡果，現時所購物品及服務，**其價值仍未包括使用後的全部處理成本，引致超出合理的使用數量。**

有效的減排方法是**減低耗用量**，其次是**再利用及循環再造**。以我們董事為例，辦公室的空調每年運轉不到10小時，平日使用大開間的二手涼風、隨身帶備水瓶以減少使用樽裝水、選擇活動如跑步、遠足或帆航而不選擇駕駛、機動船航或跑步機。

我們已在辦公室採用節能照明，並推廣將此節能策略帶到家中。向同事發表更換節能照明如LED、T5管的回報期，讓同事了解家中那些燈具需更換光源。當然，對於能源先鋒來說，為減排付出一些代價在所不辭。

HKIE Scheme

香港工程師學會大學畢業生訓練計劃“A”

To cope with our future needs for sufficient supply of high caliber engineers, we applied for more training places and had been approved by HKIE with 6 training places a year. We enrolled 5 graduate trainees last year. Sam, Frank and Banker graduated from the Hong Kong Polytechnic



University studying Mechanical Engineering while Rico graduated from the University of Hong Kong studying Electrical Engineering. James graduated from the University of Science and Technology studying Mechanical Engineering. **Training Placements for the current situation should be able to meet our growth need but may not be so after 1 to 2 years.** So far, we can still maintain low staff turnover rates and high morale. We strive to maintain a balance of works and lives of our colleagues to avoid burn out.

為公司日後發展做好人才儲備，我們向香港工程師學會申請增加受訓名額已獲批准，將受訓生名額增至每年6名，而去年已招聘5名畢業生。文天成、吳振昌及鍾並奇來自香港理工大學機械工程系、彭俊明來自香港大學電機工程系、呂晶來自香港科技大學機械工程系。培訓名額暫時足夠應付我們增長所需，但1至2年後則不能確定。至今，我們仍維持低員工流失率及高工作士氣，我們致力維持一個工作與生活均衡的狀態。

Training Trip of Our China Colleagues 內地員工來港培訓



Our China offices were too busy to send colleagues to Hong Kong for 3 months training trip in 2013. In 2014, we arranged training trips for 6 colleagues from Shanghai, Shenzhen and Chengdu offices. The prerequisite for the training is the completion of the in-house training manual before leaving home to Hong Kong so that trainees can get the most out of it.

Apart from **technical knowledge and analytical tools**, the use of **AutoCAD Revit for BIM** is also a main subject. Usage of other softwares for building services design, Energy Analysis and Green Features awareness are also parts of the intensive training targets. We have structured the timing for our in-house training to HK staff so that the engineers from China can also be benefited from these training sessions.

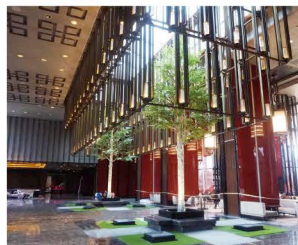
我們國內分公司在2013年工作繁重，未能派員到港接受3個月的培訓。今年，我們將安排上海、成都及深圳共6名同事來港接受培訓。為使在港培訓更有果效，學員來港前需熟習公司的設計手冊。除技術知識及系統分析工具外，今年會著重使用 **AutoCAD Revit** 進行BIM，並機電設計軟件的應用，能源分析及綠色建築措施認知等亦是培訓目標之一。我們的常規內部培訓的時間表會略為調整，讓到港接受培訓的同事亦能獲益。

PROJECT 項目

Projects Completed Recently (近期竣工項目)

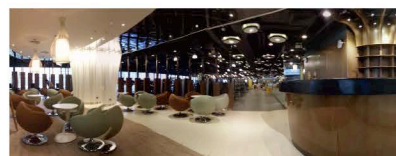
Shangri-La Hotel in Qufu, Shandong, China 中國山東曲阜香格里拉酒店 - 中國 · 山東

Shangri-La Hotel in Qufu is a 5-star hotel comprising around 400 guest rooms with floor area of 71,300m². We are engaged with full commission including the preparation of China standard construction drawings fulfilling the local approval requirements. With the help from our China colleagues to further develop our design drawings to China standard drawings, we can deliver our works effectively. Another Yingkou Shangri-La Hotel in Liaoning, China is under construction stage and will be completed in 2015.



曲阜香格里拉酒店為一所5星級酒店，設有400間客房，總面積約為71,300m²。我們受聘提供全面機電顧問服務，包括完成中國標準深度的施工圖。藉著我們國內同事的協助，我們能夠有效地完成任務。另一所位於遼寧營口的香格里拉酒店現時於施工階段，預計於2015年竣工。

California Fitness Centre at Season Mall in Tianhe, Guangzhou 加州健身中心 - 高德置地廣場四季購物中心 - 中國 · 廣州



The fitness centre occupies 3/F & 4/F of the Season Mall in Tianhe, Guangzhou with floor area of 1,750m². This is the 11th fitness centre Talent commissioned for the same client. With this 11th center we commissioned for the

client, we are delighted that we can maintain a performance acceptable to the client for such a long period. We were told that some more centres are about to be commissioned.

該健身中心佔用廣州高德置地廣場四季購物中心(夏)商場3層及4層，總面積約1,750m²。這是滙智為同一業主進行的第11所健身中心。充分了解業主的要求令我們能更快捷完成設計。這第11所中心亦見証我們能在長時間維持業主接受的技術及服務水準。我們又獲業主通知，準備新健身中心的機電顧問工作。

Major Renovation for Chung Fu Plaza, Yuen Long, Hong Kong 香港頌富商場翻新 - 香港 · 元朗

One of the Link's large-size shopping centers with total area of around 36,000m² underwent re-planning and facelift to provide up market shopping plaza. Talent carried out the M&E design and project administration for the project. With the renovation carried out phase by phase, the project was finally completed in 2nd quarter of 2013.



項目為領滙轄下其中一個大型購物中心，面積約36,000m²。經改造後擁有耳目一新的面貌。滙智負責機電系統改造設計及項目管理。翻新工程分多個階段進行，至2013年第二季全面完成。



Boutique Hotel, 196 Queen's Road Central, Hong Kong 香港皇后大道中酒店 (196 Queen's Road Central)

After completing the Le Rivage Hotel at Connaught Road West for the same client, we completed another boutique hotel at Queen's Road Central. 196 Queen's Road Central is a boutique hotel of 29 rooms with total floor area of 1,096m² and designed to be home feel studio suites with kitchen and bath. The target guests are corporate business customers, business travelers and overseas expatriates with mid to long-term stay.



為業主完成干諾道西的 Le Rivage 後，今年又為該業主完成皇后大道中的酒店。項目為一所設有29間客房，總面積1,096m²的精品酒店，客房設有廚房及浴室，創造出家居的舒適。住客以企業客戶、商業旅客及外資駐港人員為主，一般在港作中長期停留。

Gucci Stores in China 古馳名店 - 中國



Following the completion of M&E design for 10 Gucci Stores in China in 2012, we have continued in working on Gucci stores in China under the serial contract. In 2013, we have completed 2 Gucci Stores with another 2 stores under construction.

繼2012年完成10間古馳於中國名店的機電設計，我們繼續服務古馳，為古馳其他在中國的分店進行機電顧問工作。2013年初至今已完成2間分店，另外2間分店亦在施工管理過程中。

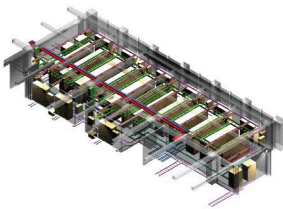
East Lake Commercial, Chengdu, Sichuan, China 成都東湖商業項目 - 中國 · 四川 · 成都

East Lake Commercial comprises of 2 office towers and a commercial podium with total floor area of around 130,000m². Talent carried out conceptual to extended preliminary design and checking of detailed design. In reaching the M&E schemes, a number of system comparisons, analyses, studies and applications of new concepts for reaching optimum solutions were carried out.

成都東湖商業項目由兩幢辦公樓及群房商業設施組成，面積約130,000m²。滙智負責方案及擴初設計，並施工圖的審核。滙智進行多項機電系統比較及專題分析，應用新概念，以達到最佳方案。



Data Centre for PCCW, Fo Tan, Hong Kong 電訊盈科數據中心 - 香港 · 火炭



The data centre consists of 2-storeyed equipment area with floor area around 1,600m². Mission critical facilities were provided including new transformers, generators, chiller plants and UPS system. Talent carried out design, project administration for the project together with the upgrading of infrastructure for the centre.

數據中心面積1,600m²。中心設有精密空調、精確供電、備用發電機及不斷電源系統。滙智進行數據中心的機電設計、施工管理及基礎設施的提升。

Renovation of the Visa Office of China's Foreign Ministry at China Resources Building, Wanchai, Hong Kong 香港華潤大廈中國外交部香港簽證新辦事處 - 香港 · 灣仔

We carried out the M&E design for the Visa Office in 2000. We were commissioned again for the new Visa Office this year. The office occupies 3 storeys with indoor area of 4,000m². Usages include visa service hall, conference rooms and offices.

2000年我們為簽證處進行機電設計，現再次獲聘及完成新辦事處的機電設計及施工管理。新辦事處佔用三個樓層，室內面積約4,000m²，包括簽證大堂、會議室及辦公室等。



Grandeur, 23 Grampian Road, Kowloon Tong, Hong Kong 嘉林邊道23號龍苑 - 香港 · 九龍塘



The development comprises of 2 low rise residential blocks with 28 residences. It includes clubhouse, basement, car parks and roof landscape garden. The total floor area is at around 6,200m². Talent carries out full M&E design and project administration.

項目共有2棟住宅，28戶大宅，並設置會所、地庫、停車場及屋頂園林設施，總面積約6,200m²。滙智負責項目的全機電設計及項目管理。

New Annex Building of Evangel Children's Home at 120 Shatin Pass Road, Wong Tai Sin, Kowloon 播道兒童之家新建大樓 - 九龍 · 黃大仙



5-storeyed new annex building with total area 1,140m² is added adjacent to the existing main building. It increases usable floor area to fulfill the growing demand for children services. The intended usages of new building include providing dormitories, classrooms, multi-purpose room and office.

新建大樓有五層樓層，座落於舊大樓旁，為播道兒童之家增加約1,140m²的面積，改進設施及滿足營運需要。新建大樓主設施包括宿舍、教室、多用途室及辦公室。

New Commissions 新任務

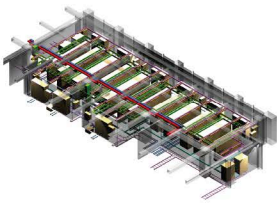
Renovation of Shopping Arcade in Park Hotel, Kowloon 百樂酒店商場改造及翻新 - 香港 · 尖沙咀

The entire podium of Park Hotel from G/F to 3/F with total area around 6,000m² undergoes re-planning and to provide up market shopping space. Talent has to design and provide an independent M&E system separated from the main system of the hotel. Calculations and analyses of M&E loads are carried out before the M&E design. Renovation works will be carried out by phases to maintain the normal operation of the hotel. The whole project will be completed and put into use by early 2014.



項目對酒店G/F至3/F總面積約6,000m²之商場部份，進行改造、重新規劃及翻新，趕上時代步伐。滙智負責設計及配置獨立系統，分割自酒店主系統，並在設計前對整個發展進行負荷計算及分析。為配合酒店的正常運作，工程分多期進行，並預計於2014年初完工投入使用。

Data Centre for PCCW Solutions, Cargo Consolidation Complex, Kwai Chung, Hong Kong 電訊服務商數據中心 - 香港 · 葵涌



The data centre consists of 9-storeyed equipment area with floor area around 12,600m² and is designed to tier III standard. Mission critical facilities are provided including new high voltage system, transformers, generators, chiller plants and UPS system. Talent carries out design, project administration for the project together with the upgrading of infrastructure for the centre.

數據中心以三級標準的標準設計，佔九層樓層，面積為12,600m²。中心設有精密空調、精確高壓及低壓供電、備用發電機及不斷電源系統。滙智進行數據中心的機電設計、施工管理及基礎設施的提升。

Redevelopment of Caritas Social Centre, Tsuen Wan, Hong Kong 荃灣明愛社區中心重建項目 - 香港 · 荃灣

The redevelopment is a 10-storeyed institutional building with social centres for a variety of services, hall, dormitories, sensory green garden, roof garden and carpark. The total gross floor area is around 8,380m². The Architect is very keen on energy conservation and sustainability. Various green features including energy saving lighting system, renewable energy systems, food waste decomposer etc will be adopted.



新建項目為一棟十層高社區中心，設施包括多元化的社區服務中心、禮堂、長者宿舍、多處綠化花園及停車場，總面積為8,380m²。項目建築師著重環保節能，將會採用多項環保設備包括節能照明、再生能源系統、廚餘回收等。

China Resources Nantong Commercial, Nantong, China 華潤南通商業項目 - 中國 · 南通



China Resources Nantong Commercial comprises of shopping centre and office tower with total floor area of around 300,000m². Talent carries out conceptual design and the checking of extended preliminary design and detailed design. In reaching the M&E schemes, a number of system comparisons, analyses, studies and applications of new concepts are carried out for reaching optimum solutions.

華潤南通商業項目包括購物中心及辦公樓，面積約300,000m²，滙智負責方案設計，並擴初及施工圖的審核。滙智進行多項機電系統比較及專題分析，應用新概念，以達到最佳方案。

Data Centre for Citic Telecom International, Ap Lei Chau, Hong Kong 香港中信國際電訊數據中心 - 香港

Following the completion of Kwai Chung Data Centre for Citic Telecom International, we are engaged in another data centre project to Tier III standard for Citic Telecom International at Ap Lei Chau. Mission critical facilities are provided with computer room air conditioning, precision power supply, UPS and generator backup. Talent carries out M&E design for the data centre and infrastructure upgrading.

繼年前完成香港中信國際電訊於葵涌的數據中心，我們繼續受僱作為香港中信國際電訊的機電顧問。數據中心位於鴨洲，並達至三級數據中心的標準。數據中心設有精密空調、精確供電、備用發電機及不斷電源系統。滙智進行數據中心的機電設計及基礎設施的提升。

Proposed Residential Development at 15-17 Coombe Road, Hong Kong 甘道15-17號住宅發展 - 香港 · 太平山



This is a 4-storeyed residential development located at mid-level having spectacular sea view. The development consists of residential houses, clubhouse, residential facilities, carpark and landscape garden. The total site area is about 2,500m² and the domestic gross floor area is about 1,800m².

項目為一棟四層高住宅發展，位於中半山高級住宅區，擁有極美港口海景。本發展包括大宅、會所、住戶設施、停車場和園林設施。佔地面積為2,500m²，總面積為1,800m²。

Redevelopment of Canton House, Queen's Road, Central 香港豐樂行重建 - 香港 · 中環

Canton House is an existing 11-storeyed commercial building and is to undergo redevelopment. The building will be redeveloped to a 26-storeyed commercial building comprising 19 storeys of offices on 4 storeys of retails. This is the second project Talent works with the same client and Architect. Knowing the requirements of the client and the design style of the Architect will definitely help us to produce good work.

豐樂行本為11層商業大廈，將被重建為26層商業大廈，包括19層辦公層及4層商店。這是滙智為同一業主及建築師進行的第2構項目，由於我們已充分了解業主的的要求及建築師的風格，相信能為項目提供優良設計。

Major Renovation of Lung Cheung Plaza, Wong Tai Sin, Hong Kong 香港龍翔商場翻新 - 香港 · 黃大仙



This Link's shopping plaza consists of 4 floors with total area of around 26,000m² and will undergo major renovation. Talent carries out M&E design and project administration for the re-provision of M&E services and the upgrading of main M&E plants such as transformer room and power distribution system. The renovated shopping mall will achieve an outlook combining both a modern and the traditional characteristics of Wong Tai Sin Temple.

此領匯購物商場共佔四層，總面積為26,000m²，將作全面翻新及改造。滙智負責機電系統設計及項目管理工作。機電系統改造包括主系統，如變壓電房及配電系統的提升等。項目改造後將令商場擁有既現代化又結合傳統黃大仙廟特色的外貌。

Major Renovation for Tsing Yi Commercial Complex, Tsing Yi Estate, Tsing Yi 香港青衣商場翻新 - 香港 · 青衣

This is a 4-storeyed building with total area of around 5,500 m² and is to undergo major renovation. Works include installation of new chiller plant, replacement of existing lifts and upgrading of the M&E installations including power transformer station. This major renovation will provide a facelift to the commercial complex.



青衣商場共有4層，總面積約5,500m²，將進行翻新規劃。項目包括新增制冷機組，更換電梯及各項機電系統的提升，包括變壓及配電站等。經改造後，商場將耳目一新。

Another Energy Audit Projects in Hong Kong 又一能源考核項目 - 香港



With the methodology developed in our past energy audit and energy saving projects, we are engaged to carry out another energy audit for 11 premises for Hang Lung Project Management and Tung Wah Group of Hospitals this year. Again, the project team is headed by our Associate Ir. Dora Ho and Ir. Patrick Chu who has many years of experiences on energy saving and energy audit. Team members Mr KW Wong, Ms SP Wan and Mr. HM Lee also have extensive experiences on this

area. As the study and reporting duration took a short period of time, several engineers are assigned to assist the field data collections and analytical studies. Through working on detailed data collections and studies, it is another good chance to train our young engineers on energy usage and energy savings.

採用我們已建立了的能源分析及系統評估技術，我們再次應用進行恒隆及東華三院合共11幢物業的能源耗用分析。工作將再次由我們具經驗的何麗嫦女士和朱卓恆先生帶領小組進行，組員包括黃健華先生、溫秀冰女士、李浩文先生等，他們均於這個領域具備充足經驗。由於整個研究及報告編制需於短時間內完成，多名同事被派進行數據搜集及分析。藉著仔細的資料搜集及分析，今年青工程師更能掌握能源耗用及節能工程這課題。

ACTIVITIES HIGHLIGHT 精彩活動

Back to Basic – Mt Haba Expedition 2013 Completed 回歸基本步 - 哈巴雪山登山計劃2013完滿結束



Village on 10 June with tour along the route until they reached Haba village at night.

To reach the summit of this mountain, it took 3 days starting from 2,400m Haba Village. It took one whole day to reach the base camp at 4,000m. Veteran climbers may choose to climb up the top at 5,396m from base camp in one single day. However, most of the climbers taking this plan would return with disappointments. Only the true mighty climbers would have the chance to succeed. **The first day from Haba Village to Base Camp passes through scenic forest and farms. From Base Camp, the plan with higher chance to reach summit is to set another camp (Camp 1) at 4,700m and the team did this.** The route from BC to Camp 1 is on a gigantic crag. This crag continues up to the snow line at 400m below the summit this year. Snow was not too thick that trekking on it was easy. Though most of the time was with clear sky, the wind was rather strong that the team experienced wind chill. When the team got to Camp 1, they did some practices of snow ascent using crampons and the self-arrest technique (for stopping slippage) using ice axes.



Staying a night with wind chill at camp 1 proved to be painful even with the beauty of sunset. On the next day (day 3), the team trekked on the crag and reached the snow at 5,000m. Ascending through snow even on gentle slope consumes enormous strength. Team members spread along the slope with different ascending speed. After 3 hours departing from Camp 1, the first climber reached the summit while the others were still struggling on the slope. After reaching the summit by each climber, the next challenge was to descend safely. **Some of our climbers lost efforts and had to slide on snow to descend. This is the cause for most of the casualties in this mountain.** Although of entry level, accidents happen almost every year with death and injury. Thank God, we were all safe in the return.

14 climbers reached the top resulting with the summit rate of 87.5% and broke our best record ever. In fact, our previous team had 3 members reached the summit of this entry level snow-capped mountain with successful rate of 33% in 2009. Although not all could reach the summit, we all had good experiences and fulfilled the once-a-lifetime target of trekking on snow mountain. Our Everest Climber KD, as promised, led the team with the help from local personal mountain guide for each climber. Join us next year for another mountaineering expedition if you missed the chance this time.



今年6月份攀登中國雲南的哈巴雪山已完滿結束。我們在公司項目所在地雲南香格里拉集合及進行高度適應。**登山隊共有16名成員 - 12名男隊員及4名女隊員。**適應包括環繞納格梅的30km自行車之旅，高度為3,200m。登山隊在6月10日向哈巴村進發，並沿途遊覽路上的各景點，包括普達措國家公園及白水台等，於晚上抵達哈巴村。

為登上這雪山，我們從2,400m高的哈巴村開始，共用了三天時間。由哈巴村徒步至4,000m的大本營需要整整一天，元老級登山者會選擇再從大本營一次登頂5,347m，但大部份都會失望折返，只有真正的登山好手才有機會成功，我們在沿途上也遇到一些。**第一天從哈巴村到大本營經過風景優美的森林及牧場。而登頂機會較高的計劃是在4,700m再建一個C1營，我們也選擇了這方法。**從大本營到C1營是在一座大岩石上，岩石路直引到今年離山頂400m下的雪綫。今年的積雪不算厚，便於行進。雖然天氣頗佳，但風力強勁，我們都能體驗到寒風刺骨的感覺。當我們抵達C1營後，即在傍邊的雪地上用冰爪進行冰雪前進的練習，也用冰斧實習下墮制動(停止下滑)。

在C1營過了狂風亂吹的一晚，即使有黃昏日落美景，也是難難受的。在次日(即上登的第三天)，登山隊在巨石上上攀，到達5,000m的雪坡。在雪地前進，即使是緩坡也極之費勁，隊員們上攀速度不同，分散在整個雪坡上。在出發3小時後，已從對講機中傳來首個隊員登頂的消息，而其他隊友正在苦幹，有的在近頂的半月彎，有的仍在陡峭的絕望坡。當最後一員最終登到頂峰後，下一挑戰是安全下撤，**部份隊員已耗盡體力，**

在雪面上滑降，這是大部份在此區發生山難的原因。雖說是入門級雪山，每年都發生山難。然而，我們最終全部安全下撤，特別為此感恩。

14名隊員登頂，成功登頂率達87.5%，創下我們的紀錄。我們於2009年亦曾攀登這入門級雪山，3名隊員登頂，成功率只有33%。

雖然不是所有隊員都能登頂，但每位隊員都能完成一生一次的攀登雪山的經驗。我們成功登頂珠峰的朱棋端，按之前承諾，在當地登山嚮導以一對一方式支援下，親自帶領團隊完成我們這次登山計劃。

若錯過這次登山的朋友們，請準備參與明年的登山活動。



Team Building Tour – Vacation Subsidy 團隊建立 - 每年旅遊贊助

Last year, team building activities were scattered with six destinations so that colleagues could select according to their own interests. **Greece, Osaka, Korea, South Africa and Singapore were selected.** These are common touring areas for the people from Hong Kong. A group of colleagues chose Fiji for **self-guided tour.** This pacific island country in Melanesia is famous for their rugby to HK people. **Water sports, Eco-tour to rain forest are indispensable.** Tour destinations for this year including **Germany, Hokkaido and Iceland + Finland** have been selected by half of our colleagues. The other half have not made up their minds. Among these, Iceland and Finland in winter should be the most challenging and interesting. They may have a very high chance of experiencing **the natural wonder of the aurora.** Coupled with the hot spring and ski activities around these Nordic countries, it should be a memorable trip if not a once-a-life-time experience they may ever have. Anyone dares to scale a 8,000m mountain? The mountains are always there and waiting.....!

去年，公司團隊建立旅遊的選擇分散在6個地點，按各同事不同需要作出選擇 - 希臘、大阪、韓國、南非及新加坡等為港人熟悉的旅遊點。另有一批同事到南太平洋島國非濟參與自助旅遊，對香港人來說，非濟為人所知的是他們的7人橫球運動。旅程不可或缺的當然是潛水、生態體驗及到火山區探索。今年半數同事已選好目的地，計有德國、北海道、冰島+芬蘭，其他同事仍未決定。這些當中，冬天遊冰島+芬蘭應是最具挑戰性及有趣的目的地，他們很大機會能親身感受北極光的宏偉。加上在這北歐國度裏享受溫泉及滑雪運動，應是一生難忘的經歷。既然如此大勇，誰有興趣挑戰8,000米級高峰，山就在那裏，等候你的到來.....!



滙智機電顧問有限公司
Talent Mechanical & Electrical Engineers Ltd.

Head Office:
總公司

Unit 203, 2/F, Dominion Centre, 43-59 Queen's Road East, Wanchai, Hong Kong
香港灣仔皇后大道東 43-59 號東美中心 2 樓 203 室
t: +852 2838 9133 f: +852 2836 0750
e-mail: info@talentme.com web-site: www.talentme.com

Beijing Office:
北京支部

Room 909, Building No.2 Guangqujiayuan (Midtown) Guangqumenwai, Dongcheng District, Beijing
北京市東城區廣渠門外廣家園(名教道) 2 號樓 909 室 Post Code: 100022
t: +86 10 6528 9740 f: +86 10 6514 1698
e-mail: bj@talentme.com

Shanghai Office:
上海支部

Unit B, 5/F, Nanyang Enterprise Building, 667 Pan Yu Road, Shanghai, China.
中國上海市番禺路 667 號南洋實業大樓 5 樓 B 室 Post Code: 200030
t: +86 21 5108 5770 f: +86 21 5258 3100
e-mail: sh@talentme.com

Shenzhen Office:
深圳支部

Room 18, Floor 15A, Pacific Building Jiabin Road, Luohu District, Shenzhen, China.
中國深圳市羅湖區嘉賓路太平洋貿易大廈 15A 18 室 Post Code: 518001
t: 86 755 2219 5358 f: 86 755 2219 5356
e-mail: sz@talentme.com

Chengdu Office:
成都支部

2101 Guo Jia New Horizons Square, 668 Jin Dong Road, Chengdu, Sichuan, China.
中國四川省成都市錦江區錦東路 668 號國嘉新視界廣場 2101 室 Post Code: 610000
t: 86 28 6898 5566 f: 86 28 6202 3595
e-mail: chengdu@talentme.com