



HK Green Building Award 2012 香港2012環保建築大獎



2012 was a fruitful year for our green and sustainability initiatives. Talent is proud to have 3 projects getting the "Green Building Award 2012". After years of unrelenting hard work on promoting environmental friendly, sustainable and energy conservation strategies, Talent had tasted the fruit of its deeds. The projects are:-

Caritas Community Education/Clinic - Grand Award (Existing Building Category)

Exchange Tower - Merit Award (Existing Building Category)

Renovation of China Resources Building - Finalist (Existing Building Category)

We believe that this is only the beginning of our mission. We still have a lot to explore and learn. With these awards as encouragements to our targets, we will continue to put efforts and resources in offering environmentally friendly schemes, promoting green strategies and sustainable M&E systems to our clients. Our customers are well informed of the costs and benefits of such strategies so that appropriate decisions can be made. There are also clients who share the same vision with us and willing to sacrifice a bit for creating sustainable works.



2012年是我們對環保建築及可持續發展至豐收的一年。滙智的三個項目獲取香港建築議會所頒發的“2012年環保建築獎項”。繼多年來努力不懈地推廣環境保護、可持續發展及能源節約的策略，我們終於初嘗回報。獲獎項目為：-

明愛社區教育中心/診所 - 大獎(既有建築類別)
國際交易大樓 - 優異(既有建築類別)
華潤大廈改造工程 - 入選(既有建築類別)



我們相信這只是大使命的開始，我們仍需努力學習及探求。得到這些獎項的鼓勵，我們會繼續投入資源及力量，向客戶推薦綠色策略及可持續的機電系統。客戶對這些策略有充份了解，清楚其優點及代價，從而作出適當的決策。我們的客戶中不乏同路人，他們也具願意付出的心，為地球可以持續而付出代價。

Expansion of Hong Kong Office 香港公司擴展



In the past few years, the volume of works has been increasing constantly and we have been breaking record each year despite the fluctuation of the economy. Despite the expansion 3 years ago by taking up extra space, we rented some more space last year in the neighboring unit of our current office. We intend to increase team size rather than relying on colleagues to work

overtime to cater for increased work load. With this expansion, we have increased our job handling capacity by 20%. However, the new projects we commissioned in the past few months had consumed most of this increased capacity. We have to be very careful in taking up new assignments so as to keep up good works.

在過往數年，我們工作量不斷增加，雖經歷了經濟波動，營業額仍每年刷新紀錄。我們3年前增加的面積，很快又不敷應用，去年我們租用與現時辦公室接鄰單元，增大辦公面積。我們以增大團隊規模來配合所增加的工作量，而不希望以同事加班來完成任務。增大團隊規模的安排已將項目處理容量增加20%。然而，過去數月所承接的新項目已佔用大部份所增資源。我們需要更謹慎去承接新項目，以保證我們能維持良好的工作果效。

Company News

公司動態

Promotion to Associate – Mr Patrick Chu 晉昇聯值董事 — 朱卓恒先生



Patrick graduated from the Hong Kong University of Science and Technology with honor degree in Mechanical Engineering in 2000. He holds a Master Degree in Building Services Engineering and is a Chartered Engineer. He joined Talent as graduate trainee since his graduation in 2000. Through years of relentless hard work and focusing on projects' and clients' needs, he won countless compliments and appreciations from project teams. He developed an analytical mind and handled projects cautiously at a very early stage of his career. This has eased our burden on the high demand on quality project team leader. His experiences cover office tower, hotel, research centre, large scale residential development, energy saving etc. and he specializes on formulation of M&E schemes and analytical studies. His promotion strengthens our project handling capability and the training of other engineering colleagues.

朱卓恒先生於2000年畢業於香港科技大學，獲機械工程榮譽學士學位，隨後獲取屋宇裝備工程學碩士學位及英國特許工程師資格。朱先生從畢業起便加入滙智作為受訓畢業生。其過人的分析能力及謹慎的處事作風，經年累月的辛勤工作及專注於項目及業主要求，已取得業主及項目團隊的信賴及好評，也減輕了我們缺乏資深項目主管的負擔。朱先生的經驗涵蓋辦公樓、酒店、科研、大型住宅發展、節約能源等，專長於機電方案研究、定案及系統分析。他的晉昇加強了我們對項目的處理能力及人員培訓力量。

HKIE Scheme A Trainees 香港工程師學會大學畢業生訓練計劃“A”



To cope with our future needs for sufficient supply of high caliber engineers, we applied for more training places and had been approved by HKIE with 6 training places a year. We enrolled 4 graduate trainees last year. MC and Pan graduated from the Hong Kong Polytechnic University studying Mechanical Engineering while Ariel and Joe graduated from the same University studying Building Services Engineering. Training Placements for the current situation should be able to meet our growth need but not so confident 1 to 2 years later. So far, we can still maintain low staff turnover rates and high morale. We strive to maintain a balance of works and lives of our colleagues to avoid burn out.

為公司日後發展做好人才儲備，我們向香港工程師學會申請增加受訓名額已獲批准，將受訓生名額增至每年6名，而去年已招聘4名畢業生。陳偉楠及陳漢斌來自香港理工大學機械工程系、李相恩及李耀宗來自香港理工大學屋宇裝備工程系。培訓名額暫時足夠應付我們增長所需，但一至兩年後則不能確定。至今，我們仍維持低員工流失率及高工作士氣，我們致力維持一個工作與生活均衡的狀態。

PROJECT 項目

Projects Completed Recently (近期竣工項目)

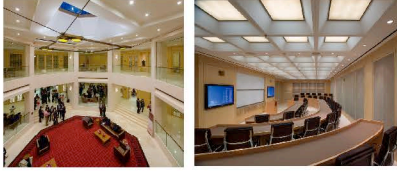
Beijing University Stanford China Centre, Beijing, China

北京大學史丹福中心 - 中國 · 北京



The new center is a **joint development project between Stanford University and Peking University**. It is a wooden frame, historic type of structure (四合院), approximately 4,000m², with one above-grade storey, garden court and two levels of basements. The building is **located inside the campus of Peking University** and includes offices, conference, reception

space, workspace, multi-purpose room and lounge areas. The project was completed in 2012.



項目為美國史丹福大學與北京大學合作的一所學術交流中心，位於北京大學校園區內，建築面積約4,000m²，地上一層是傳統木結構四合院建築連庭園，地下兩層包括會議、辦公、接待、發報會/宴會多功能區等。項目於2012年竣工。

Data Centre for Citic Telecom International, Kwai Chung, Hong Kong

香港中信國際電訊數據中心 - 香港 · 葵涌

We are engaged in the data centre project for Citic Telecom in Hong Kong. Following the completion of Phase 1 last year, Phase 2 to tier III standard was also completed. Mission critical facilities are provided with computer room air conditioning, precision power supply, UPS and generator backup. Talent carried out M&E design for the data centre and infrastructure upgrading.

我們受僱作為香港中信國際電訊數據中心的機電顧問。繼年前完成第一期工程後，第二期亦已完工，並達至三級數據中心標準。數據中心設有精密空調、精確供電、備用發電機及不斷電源系統。滙智進行數據中心的機電設計及基礎設施的提升。



Renovation of Yiu On Shopping Centre, Ma On Shan, H.K.

耀安商場改造 - 香港 · 馬鞍山



The Link's shopping centre consists of 2 floors with total area around 2,500m². Part of the shopping centre was renovated. We carried out M&E design and project administration for re-provision of M&E services and the associated installation. The renovation provided a facelift to the shopping centre.

為領匯轄下的商場，由兩層商舖組成，項目對部份面積進行改造，改造面積約2,500m²。我們為項目提供機電系統及配套设施的設計及施工管理，經改造後的商場耳目一新。

Gucci Stores in China

古馳名店 - 中國

Following the completion of M&E design for 8 Gucci Stores in China in 2011, we have been keeping ourselves busy in working on Gucci stores in China under the serial contract. In 2012, we completed 6 Gucci Stores with another 3 stores in progress. Among these stores are 2 signature stores with multi-storey facilities covering retail and cafeteria.

繼2011年完成8間古馳於中國名店的機電設計，我們繼續服務古馳，為古馳其他在中國的分店進行機電顧問工作。2012年年初今已完成6間分店，另外3間分店亦在進行機電設計或施工管理過程中。其中2間分店屬於地區性旗艦店，附設多層商業、咖啡茶座等設施。



Power Upgrading for Lok Man Sun Tsuen, Tokwawan, H.K.

樂民新邨電力擴容 - 香港 · 土瓜灣



Lok Man Sun Tsuen is a public housing estate comprised of 9 high rise residential blocks with total floor area of 140,000m². The housing estate has been put in use for over 30 years. The power upgrading work needed detail analysis on the current power system and its usage. Data logging were carried out to check the power consumption, power quality and usage pattern. With the upgrading work carried out area by area, it took 4 years for the planning, design and power upgrading works.

土瓜灣樂民新邨為一個由9幢高層住宅組成的公營房屋，總面積約140,000m²，已落成超過30年。本次電力擴容工作需對現有電力裝置及用電狀況進行詳細分析。耗電資料搜集器將每幢樓宇的耗電量、供電特性及質素、並用電模式進行紀錄。項目分區域進行，整個電力擴容設計、規劃至施工歷時約四年。

California Fitness Centres at Elizabeth House and Grand Tower, H.K.

加州健身中心 - 伊利沙伯大廈及雅蘭中心 · 香港

The two fitness centres occupy 4/F of The Elizabeth House and 5/F & 6/F of The Grand Tower with floor area of 2,500m² and 3,200m² respectively. These are the 9th and 10th fitness centres Talent commissioned for the same client. Fully grasping the client's requirements renders us carrying out design work expeditiously. With this 10th center we commissioned for the client, we are delighted that we can maintain a performance acceptable to the client for such a long period. We were told that some centres are about to be commissioned.



兩間健身中心分別佔用銅鑼灣伊利沙伯大廈4樓及旺角雅蘭中心5樓及6樓，總面積分別約2,500m²及3,200m²。這是滙智為同一業主進行的第9及10所健身中心。充分了解業主的的要求令我們能更快捷完成設計。這第10所中心亦見證我們能在這長時間維持業主接受的技術及服務水準。我們又獲業主通知，準備新建健身中心的機電顧問工作。

Renovation of Chongqing Times Square, Chongqing, China

重慶時代廣場改造 - 中國 · 重慶



The entire podium of Times Square in Chongqing from B1 to 6/F of total area 47,000m² underwent re-planning and facelift to provide up market shopping space. Talent carried out the M&E design and project administration for the project. Calculation and analysis of the M&E loads were also done before the design. With the renovation carried out phase by phase, the project was finally completed in 2012.

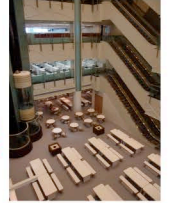
項目對裙樓一層至六層及地庫一層進行改造，總面積共47,000m²。經重新規劃翻新，趕上時代步伐。滙智負責機電設計及施工管理，並在設計前對整個發展進行負荷計算及分析。翻新工作分期進行，至2012年終於全面完工。

項目對裙樓一層至六層及地庫一層進行改造，總面積共47,000m²。經重新規劃翻新，趕上時代步伐。滙智負責機電設計及施工管理，並在設計前對整個發展進行負荷計算及分析。翻新工作分期進行，至2012年終於全面完工。

Li & Fung Office at Four Point Sheraton, Shenzhen, Guangdong, China

利豐辦公室 - 深圳福朋喜來登酒店 - 中國 · 廣東 · 深圳

The new office locates at 1/F to 3/F podium of the hotel. It consists of offices, meeting rooms, multi-purpose rooms, recruitment center, canteens, lab rooms, work rooms, etc. with total floor area around 12,000m². Talent carried out design and project administration for the fitting out works. This project is a fast track and smooth one. The whole design, tender and construction process took only 8 months. Close co-ordination and swift decision are critical to the timely completion of the project.



辦公室佔用酒店裙樓一層至三層，總面積約12,000m²，設有辦公室、會議室、多用途室、招聘中心、食堂、實驗室、工作室等。滙智負責機電設計及施工管理。整個項目進行得暢順快捷，從設計、招投標至施工完成只需8個月，團隊間的緊密配合及快速的決策是項目如期完工的重要因素。



One Mayfair, 1 Broadcast Drive, Kowloon Tong, H.K.

九龍塘廣播道1號 - 逸瓏 - 香港 · 九龍塘

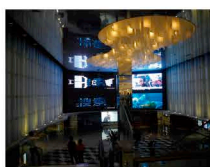


The development comprises 6 residential towers with 120 exclusive residences crafted to the finest details. It includes clubhouse, recreational facilities, outdoor swimming pool and landscape garden. It is situated in high class residential district in Kowloon Tong. The market demand for luxury residences is proved to be high judging from the high unit price per floor area in recent years.

項目位處九龍塘傳統豪宅地段，共有6棟住宅，120戶精心打造的大宅，設有會所、康樂設施、戶外泳池及園藝花園等。市場對豪宅需求殷切，從房價中可見一斑。

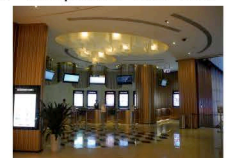
Cinemas in Chengdu and Shenyang, China

成都及沈陽電影院群 - 中國



A popular cinema chain expands its territory in China. We were engaged in 4 of their target locations. 2 cinema clusters each consists of 6 cinemas were completed. Talent carried out M&E design and project administration for these cinema clusters. Design work for another cinema in Shanghai was completed and site works are proceeding.

享譽盛名的電影院綫，正擴充其於中國的領域，滙智參與其中四個城市的影院項目。兩所各設6間電影院的電影院群已完成，滙智進行機電設計及項目管理。另外，上海電影院群亦完成設計並正進行施工。



New Commissions 新任務

Shangri-La Hotel in Zhuhai, Guangdong, China

中國珠海香格里拉酒店 - 中國 · 廣東 · 珠海

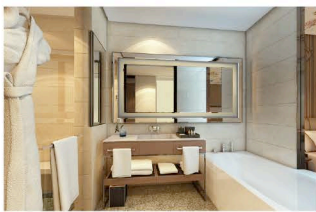


Following the engagement for M&E design of Shangri-La Qufu and Yingkou years ago, we are commissioned again and carry out M&E design for Zhuhai Shangri-La Hotel. The hotel is with 320 guest rooms consisting Convention Centre, Villas, Academy, and Staff Housing. Total area is 100,450m². Full service including conceptual design up to working drawings design together with project administration is commissioned. The project is managed with fast track process.

繼年前進行曲阜及營口香格里拉酒店機電設計後，我們又獲聘進行珠海香格里拉酒店的機電設計工作，酒店共320間客房，並設會議中心、單棟式豪華套房、培訓中心及員工宿舍，總面積約100,450m²。機電服務從方案設計至施工圖制作，及施工階段的項目管理等，項目以快速完成方法管理。

Grand Hyatt Hefei Hotel, in MIXC Hefei, Anhui, China

合肥萬象城項目君悅酒店 - 中國 · 安徽 · 合肥



We are engaged in M&E fitting out design for the new hotel Grand Hyatt Hefei situated inside the proposed MIXC Hefei. The hotel is located in Basements, Level 1 to Level 6 of podium, the upper levels and roof of the 280m high Tower. It consists of the International Village, lobbies, lobby lounges, hotel guestrooms, meeting residences, private dining rooms,

restaurants, spas and pools, etc. Total hotel interior area is approximately 40,000m² and the total area is around 80,000m².

我們受僱進行新建酒店配合精裝的機電設計。酒店位於擬興建的合肥萬象城內，其中功能用房設置在裙房1層至6層及地庫，酒店客房設於280米塔樓的上部及屋頂層。酒店設國際村、大堂、大堂吧、酒店客房、會議公寓、私人包廂、餐廳、水療、游泳池等設施。精裝部份面積約40,000m²，酒店總建築面積約80,000m²。



Replanning of Data Centre for The Open University of Hong Kong

香港公開大學數據中心翻新 - 香港 · 何文田

The existing computer centre has been operated for 16 years. It is re-planned and upgraded to cope with the operation of the campus. Total replanned area is around 338m². Existing computer room air-conditioning units will be replaced at the same time to enhance reliability. Talent carries out M&E design and project administration of the computer centre replanning work.

數據中心已運作達16年，面積約338m²，數據中心將從新規劃，並配置新造伺服器房，以滿足大學數據設施的需求。現有電腦房空調機將一併更新，以增加可靠性。滙智進行此工程的機電設計及施工管理。



New Cooling Tower Plant for One Island East, Quarry Bay, H.K.

港島東中心冷卻塔機組 - 香港 · 鯉魚涌



We are engaged by Swire Properties Management Limited to undertake consultancy for the provision of new cooling tower plant for the 68-storey Grade A office building, following the replanning of the heat rejection system of the building. The new cooling tower plant located on the roof of the building will provide heat rejection for the existing chiller plant of 6,000TR cooling capacity.

我司受僱於太古地產物業管理有限公司，為此棟68層甲級辦公大樓從新規劃空調冷卻系統，提供新造冷卻塔機組的機電顧問服務。新冷卻塔機組位於大樓屋頂，為現有共6000冷噸之水冷制冷機系統提供散熱容量。

A&A Works to Block A, TWGHs Jockey Club Rehabilitation Centre, Aberdeen, H.K.

東華三院賽馬會康復中心A座改建 - 香港 · 香港仔

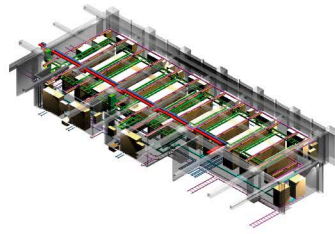
2-storey of total area 2,500m² will be added to the existing Block A. The premises are to provide training facilities for mentally disabled groups. The intended usages include health care facilities with dormitories, training rooms, multi-purpose rooms and office. The project is designed to obtain bronze grade under BEAM Plus certification.



現有A座將增建2層，面積約2,500m²，為弱能人士提供培訓設施。設施主要有康健護理，並設宿舍、培訓室、多用途室及辦公室。項目以環境標準BEAM Plus興建，目標為獲取銅獎。

Citic Telecom International Data Centre, Hong Kong

香港中信國際電訊數據中心 - 香港



Following the successful inauguration of the Citic Telecom International Data Centre at Kwai Chung, we are engaged in another Data Centre for Citic Telecom International. The new data centre with Tier 3 provisions occupies an area of 2,300m², and will be equipped with completely independent mission critical facilities, mechanical and electrical plants. Engaging in the data centre project with same design team & project

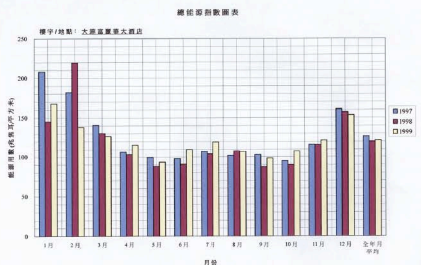
management team will definitely improve the work accuracy and efficiency.

繼完成中信國際電訊位於葵涌的數據中心後，我們又獲聘進行另一個香港中信國際電訊數據中心的機電顧問。三級標準的數據中心共佔面積2,300m²，滙智進行數據中心的機電設計，與同一設計團隊及項目管理隊伍再次合作，工作準確度及效率必然得到提高。

Another Energy Audit Projects in Hong Kong

又一能源考核項目 - 香港

With the methodology developed in our past energy audit and energy saving projects, we are engaged to carry out another energy audit for 5 premises for Hang Lung Project Management and Harriman Property this year. Again, the project team is headed by our Associate Ir. Dora Ho who has many years of experiences on energy saving and energy audit. Team members Ms Bella Lui, Mr KW Wong, Ms SP Wan and Mr. HM Lee also have extensive experiences on this area. As the study and reporting duration takes a short period of time, several engineers are assigned to assist the field data collections and analytical studies. Through working on detailed data collections and studies, it was another good chance to train our young engineers on energy usage and energy savings.



採用我們已建立了的能源分析及系統評估技術，我們恒隆項目管理及夏利文物業管理對合共5幢物業進行能源耗用分析。工作將再次由我們的能源專家何麗端女士帶領小組進行。何女士具多年能源節約及分析經驗，組員包括呂惠嫻女士、黃健華先生、溫秀冰女士、李浩文先生等，他們均於這個領域具備充足經驗。由於整個研究及報告編纂需於短時間內完成，多名同事被派進行數據搜集及分析。藉著仔細的資料搜集及分析，令年青工程師更能掌握能源耗用及節能工程這課題。

IBM Office at PCCW Tower, Quarry Bay, H.K.

IBM辦公室翻新 - 電訊盈科中心 - 香港 · 鯉魚涌



Portion of the existing IBM office located at several floors of PCCW Tower is renovated to cope with operation needs. Total renovated area is around 1,000m². Talent carries out design and project administration of fitting out for existing offices and improvement of the M&E design on existing Solution Centre.

部份設於大樓數層之現有辦公室將會翻新，以滿足營運需要，總翻新面積約為1,000m²。滙智進行辦公室翻新工程的機電設計及項目管理，並提升現有數據中心的基礎設施。

ACTIVITIES HIGHLIGHT 精彩活動

Team Building Tour – Vacation Subsidy

團隊建立 — 每年旅遊贊助



Last year, again, team building activities were dominated by fascinating tours filled with hardship but enjoyable tours. A group of colleagues opted for **Romantic trip in Germany** while some joined the tours to **Russia to experience Slav culture**. Another group toured **Turkey for Byzantium and Ottoman histories and relics**. Even with the German trips, colleagues needed to take night train in order to save time for touring and visiting remote area. This year, colleagues continue to organize **self-guided tour to Fiji**, a pacific island country in Melanesia, famous for their rugby to HK people. **Water sports should be the focus of the tour with diving not dispensable**. **Eco-tour to rain forest and volcanic region are also the cores of the tour**. For the busy colleagues, they will go for **ski trip in Korea**

to save time. Hope that they can improve their skill without breaking the leg and can compete with our snowboard team leader Benson Ho who can perform 360° serial jump turns. A group of history bugs plan to go to **Greece** to explore the rich ancient civilization. Will they see the School of Athens? Oops, it is in Vatican on the wall! Even with the increasing coverage of touring experiences of our colleagues, there are still a lot of destinations to explore. See the 50 must go places published by National Geographic in 2012 with the first one in Lujiang, Yunan – takes days of transportation to get there!



去年，刻苦但心情舒暢，並迷人景緻之旅成為公司團隊建立旅遊的主流選擇。一批同事前往**德國浪漫之路**；另一批到**俄國體驗斯拉夫民族的歷史文化**；亦有一組同事到**土耳其，觀摩拜占庭及奧斯曼帝國的歷史遺跡**。即使是德國之旅，同事們也是歷盡艱辛，為節省時間而乘夜車，趕往偏遠地區。今年，同事計劃到**南太平洋島國菲律賓參與生態之旅**，對香港人來說，菲律賓人所知的是他們的7人檯球運動。此旅的重點是水上活動，不可或缺的當然是**潛水活動**，其次是**生態體驗及到火山區探索**。繁忙的同事，他們選擇到**韓國滑雪**，希望他們的技術有所提升，完整無缺歸來，挑戰我們可於滑行時作360°彈跳轉體的單板隊長何冠熾。另一組歷史文化愛好者，將到**希臘這文明古國**，他們會否看到“**雅典學院**”？噢不，那是在梵蒂岡的牆上。即使同事們擁有多年的旅遊經歷，還是有很多新地點仍未覆蓋，參考國家地理雜誌2012年出版的50個必去地點，放在首位的是雲南怒江獨龍族地帶，單是交通時間就要數天呢！

為人所知的是他們的7人檯球運動。此旅的重點是水上活動，不可或缺的當然是**潛水活動**，其次是**生態體驗及到火山區探索**。繁忙的同事，他們選擇到**韓國滑雪**，希望他們的技術有所提升，完整無缺歸來，挑戰我們可於滑行時作360°彈跳轉體的單板隊長何冠熾。另一組歷史文化愛好者，將到**希臘這文明古國**，他們會否看到“**雅典學院**”？噢不，那是在梵蒂岡的牆上。即使同事們擁有多年的旅遊經歷，還是有很多新地點仍未覆蓋，參考國家地理雜誌2012年出版的50個必去地點，放在首位的是雲南怒江獨龍族地帶，單是交通時間就要數天呢！



滙智機電顧問有限公司
Talent Mechanical & Electrical Engineers Ltd.

Head Office: Unit 203, 2/F, Dominion Centre, 43-59 Queen's Road East, Wanchai, Hong Kong
香港灣仔皇后大道東 43-59 號東美中心 2 樓 203 室
t: +852 2838 9133 f: +852 2836 0750
e-mail: info@talentme.com web-site: www.talentme.com

Beijing Office: Rm.702-4, 5 Dong Zong Bu Alley, Jianguomenwai, Beijing, China.
中國北京市東城區東總布胡同 5 號設計院 702-4 室 Post Code: 100005
t: +86 10 6528 9740 f: +86 10 6514 1698
e-mail: bj@talentme.com

Shanghai Office: Unit B, 5/F, Nanyang Enterprise Building, 667 Pan Yu Road, Shanghai, China.
中國上海市番禺路 667 號南洋實業大樓 5 樓 B 室 Post Code: 200030
t: +86 21 5108 5770 f: +86 21 5258 3100
e-mail: sh@talentme.com

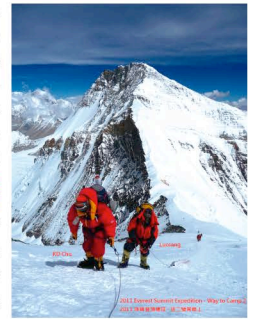
Shenzhen Office: Room 18, Floor 15A, Pacific Building Jiabin Road, Luohu District, Shenzhen, China.
中國深圳市羅湖區嘉賓路太平洋貿易大廈 15A 18 室 Post Code: 518001
t: 86 755 2219 5358 f: 86 755 2219 5356
e-mail: sz@talentme.com

Chengdu Office: 2101 Guo Jia New Horizons Square, 668 Jin Dong Road, Chengdu, Sichuan, China.
中國四川省成都市錦江區錦東路 668 號國嘉新視界廣場 2101 室 Post Code: 610000
t: 86 28 6898 5566 f: 86 28 6202 3595
e-mail: chengdu@talentme.com

Back to Basic – Mt Haba Expedition 2013

回歸基本步 — 哈巴雪山登山計劃 2013

After fluttering our flag on the top of Mt Everest in 2011, we are organizing an expedition to Mt Haba, Yunnan, China in June 2013. We have a project in Shangri-La, Yunnan this year and it is only 2-hour drive to the base of the mountain, the Haba Village, and can provide some logistic supports. In fact, **we had 3 team members reached the summit of this entry level snow-capped mountain in 2009**. To reach the summit of this mountain, it would take 3 to 4 days starting from 2400m Haba Village. It takes one whole day to reach the base camp at 4,000m. Veteran climbers may choose to climb up the top at 5,347m from base camp in one single day. However, most of the climbers taking this plan would return with disappointments. Only the true mighty climbers would have the chance to succeed. **The route on the first day from Haba Village to Base Camp passes through scenic forest and farms**. The weather may change suddenly from sunny sky to windy, snowy or even with falling hail conditions. Climbers with insufficient endurance training may be exhausted when approaching Base Camp. The summit chance may become gloomy. From Base Camp, **the plan with higher chance to reach summit is to set another camp (Camp 1) at 4,700m**. The route from BC to Camp 1 is on a gigantic crag. This crag continues up to the snow line usually at 300m to 400m below the summit. Snow is usually thick. Ascending through snow even on gentle slope consumes enormous strength. After reaching the summit, the next challenge is to descend safely. **Some climbers lose efforts and have to slide on snow to descend. This is the cause for most of the casualties in this mountain**. Although of entry level, accidents happen almost every year with death and injury. So, if you want to go with us, please be prepared and train your muscle and preferably attend some mountain crafts courses. Of course we will brief you the mountain conditions and the safety precautions to be observed. Our Everest Climber KD will lead the team with the help from local personal mountain guide for each climber. Join us if you intend to start your mountain dream.



繼2011年滙智的旗幟在世界最高峰珠穆朗瑪峰頂飄揚後，我們正組織今年6月份攀登中國雲南的哈巴雪山。我們正進行位於雲南香格里拉的酒店項目，離山底的哈巴村只兩個小時車程，可以提供一些支援。**我們於2009年亦曾攀登這入門級雪山，三名隊員登頂**。要登上這雪山，需從2,400m高的哈巴村開始，共需三至四天時間。由哈巴村徒步至4,000m的大本營需要整整一天，元老級登山者會選擇從大本營一次性登頂5,347m，但大部份都會失望折返，只有真正的登山好手才有機會成功。**第一天從哈巴村到大本營會經過風景優美的森林及牧場**，鍛鍊不足的山友抵達大本營時可能已筋疲力竭，登頂機會已很渺茫。**而登頂機會較高的計劃是在4,700m再建一個C1營**。從大本營到C1營是在一座大岩石上，岩石路直引到離山頂300m至400m下的雪綫。積雪一般頗厚，在雪地前進，即使是緩坡也極之費勁，當最終能登到頂峰，下一挑戰是安全下撤，**部份登山者因已耗盡體力，在雪面上滑降，這是大部份在此區發生山難的原因**。雖說是入門級雪山，每年都發生山難。故此，若準備與我們同行，請提前鍛鍊肌力，最好還學習一些山藝課程。當然，我們會授與天氣及環境狀況的資料，並安全知識等。我們成功登頂珠峰的朱棋端會親自帶領團隊登頂，並安排當地登山嚮導，以一對一方式支援我們這次登山計劃。若開始尋找您的登山夢，請加入我們的哈巴登山隊。

